



الريمان
ALREEMAN
— II —







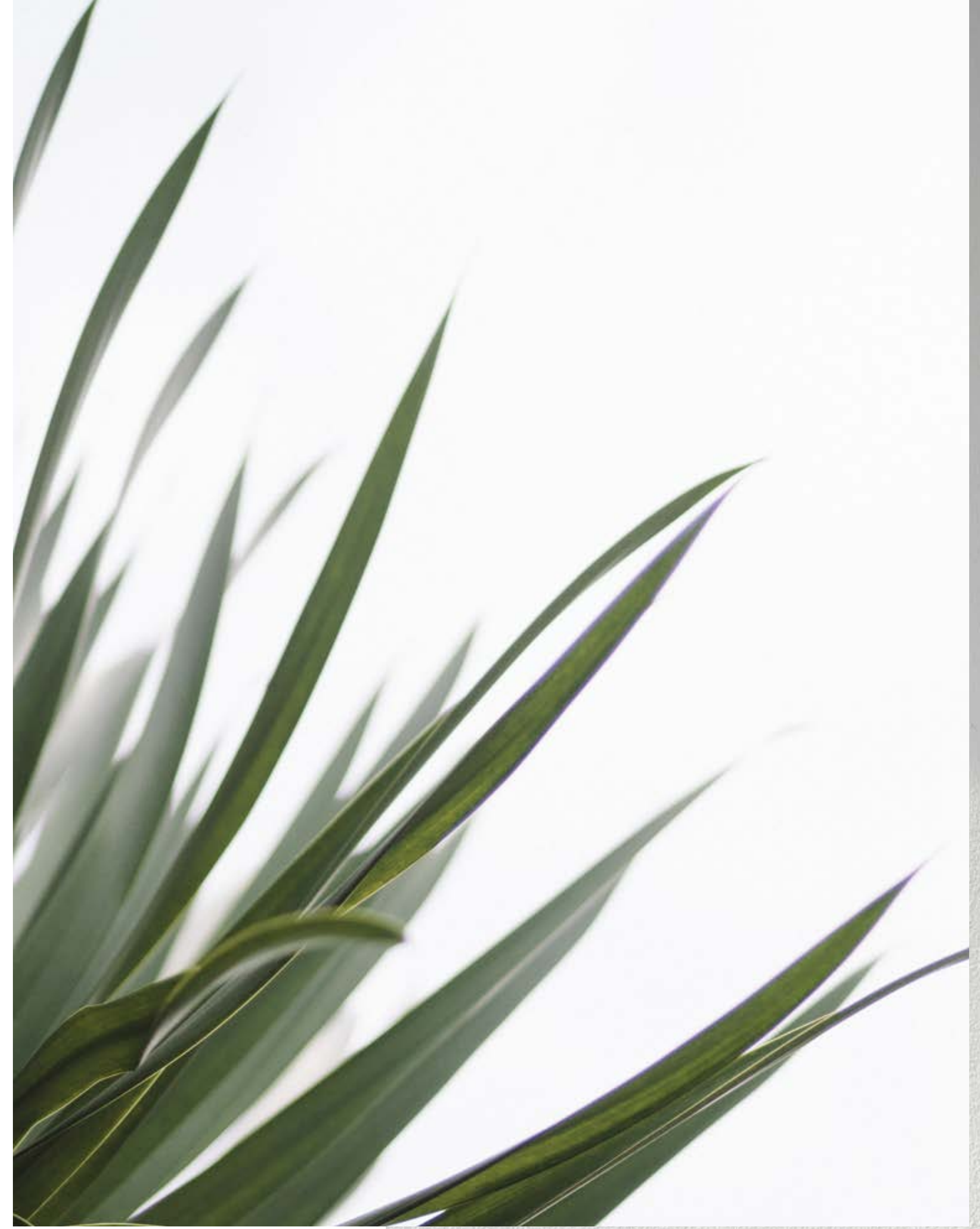
ABU DHABI

Abu Dhabi, the capital of the UAE, has become home to people from all over the world who are drawn to its natural beauty, vibrant cultural scene, inspiring heritage and dynamic business landscape.



ALDAR PROPERTIES

We are one of the most trusted and recognised real estate lifestyle developers in the UAE. Our goal isn't simply to build properties. We strive to shape communities that people love to live in. Communities that become homes, brimming with life and everything we love. Because home isn't just a place, it's a feeling and that's what we promise to deliver to you every day.





AL SHAMKHA

Just off the highway, the Al Shamkha neighbourhood is the perfect base for a calm, convenient and contemporary lifestyle. It offers easy access to the bright lights and bustle of Abu Dhabi, thanks to a convenient network of roads (Al Mafraq, Al Ain, Mohammed Bin Rashid Street and Suwaihan). The drive to Abu Dhabi International Airport is also swift and scenic, so whether you're travelling for business or pleasure, you'll arrive at your terminal in a matter of minutes.





Blending modernism with
tradition, alreeman celebrates
the virtues at the heart of the UAE.





ALREEMAN

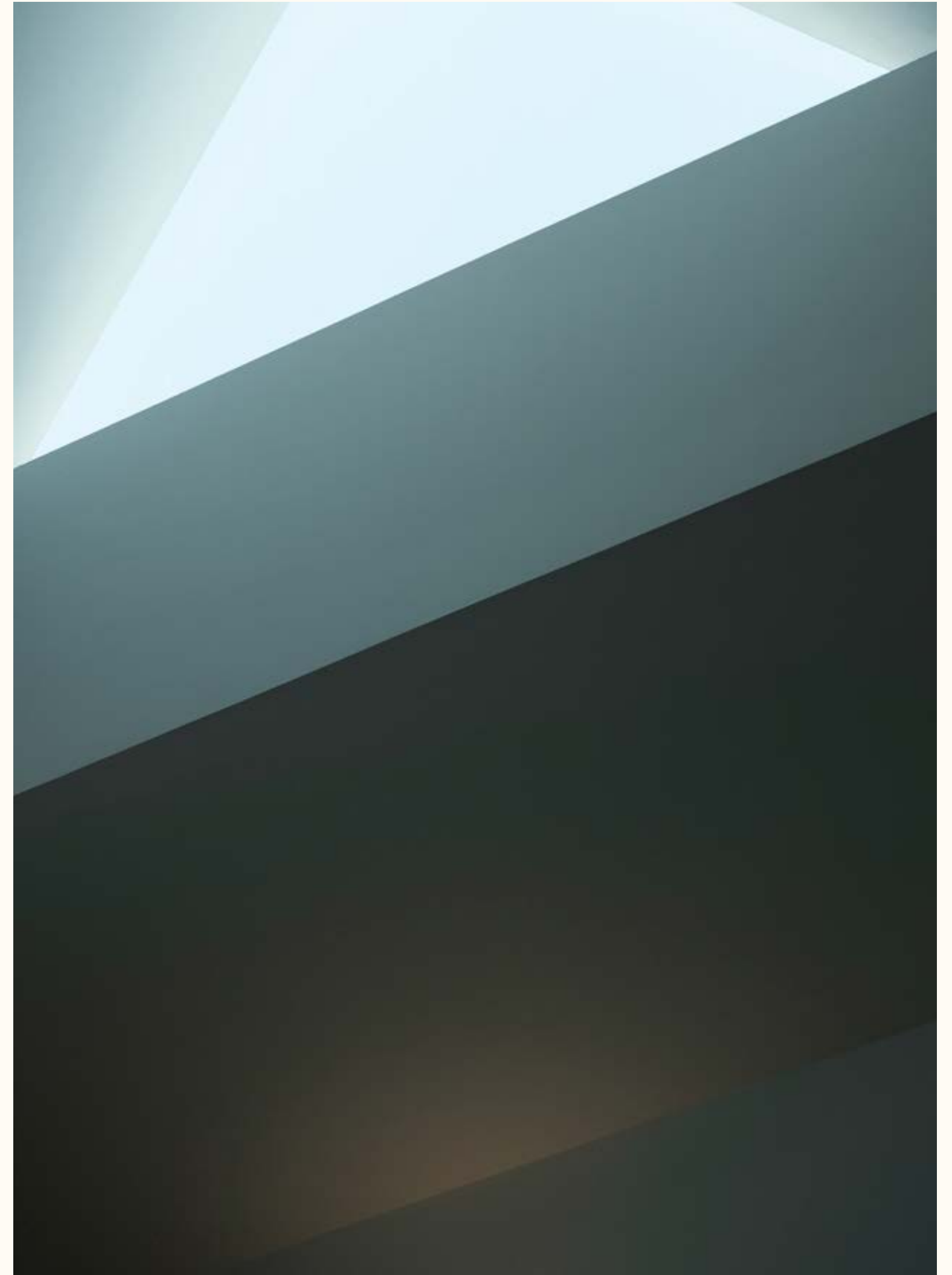
Alreeman lays down the canvas on which you can create the blueprint for the home you've always dreamed of. With a single plot of land, you can create a space that's uniquely your own.





WELCOME HOME

The blossoming Alreeman community offers a range of amenities designed for convenient and sustainable living. Creating a neighbourhood where you and those closest to you can lay roots, plan futures and build lives.

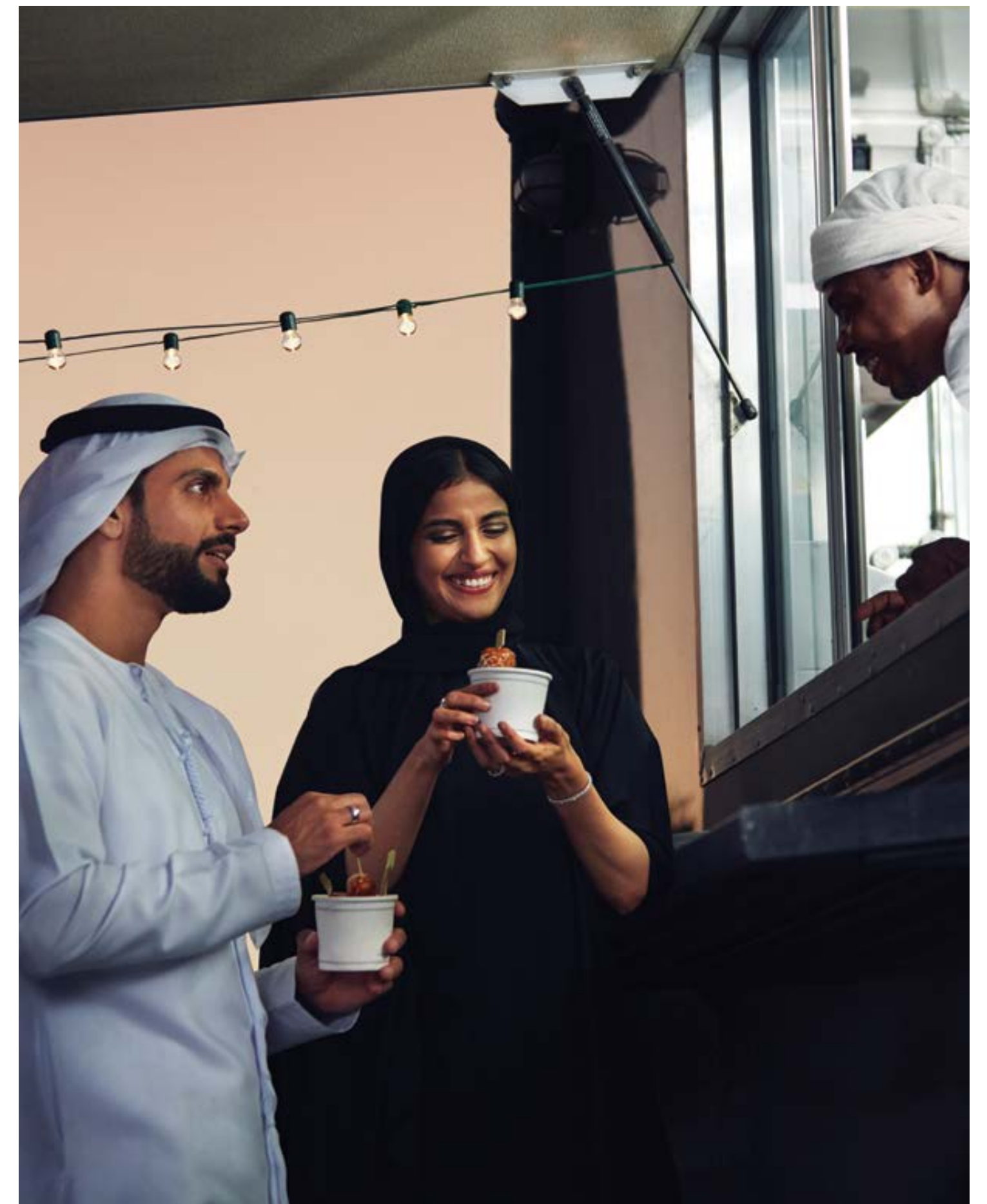




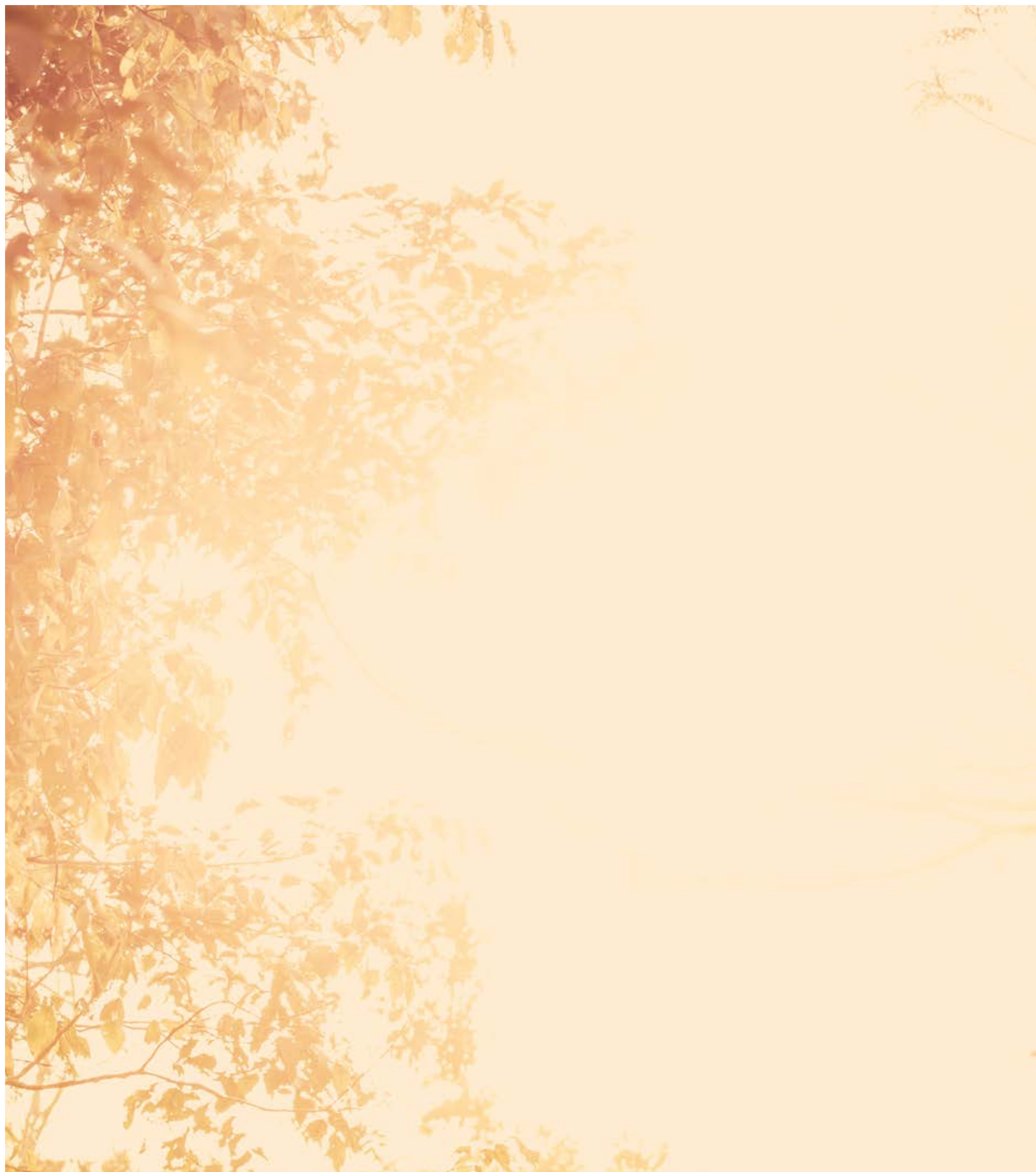


ON YOUR DOORSTEP

Bicycle tracks and running paths weave through rich green parks. While schools, community centres, medical clinics, nurseries, mosques and retails stores are all within walking distance. Alreeman's unique location puts Yas Island, Al Forsan International Sports Resort, Al Ghazal Golf Club and Masdar City on your doorstep. For those who love a little retail therapy, Yas Mall is just a short drive away.









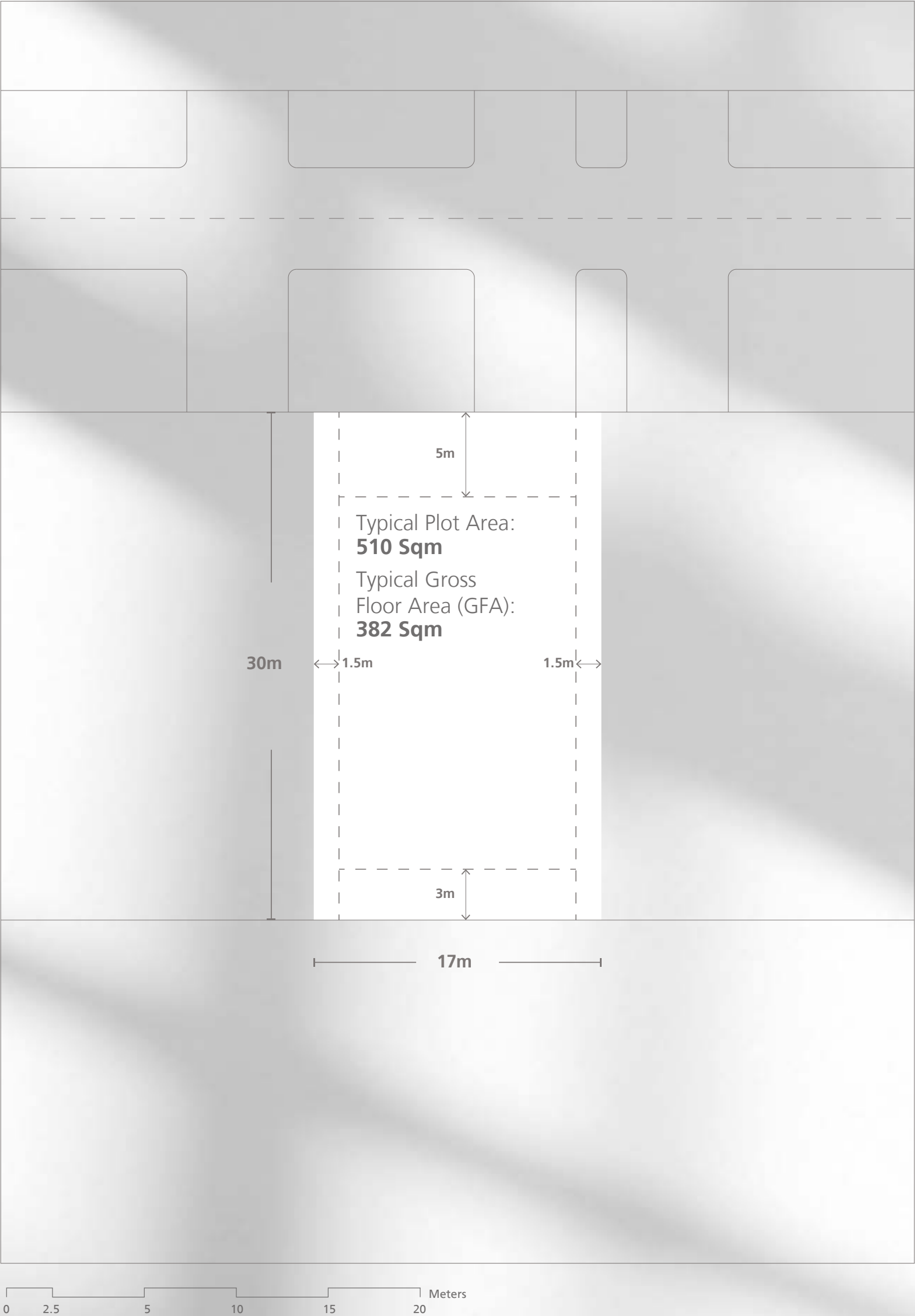


RESIDENTIAL LAND

PLAN TYPE A



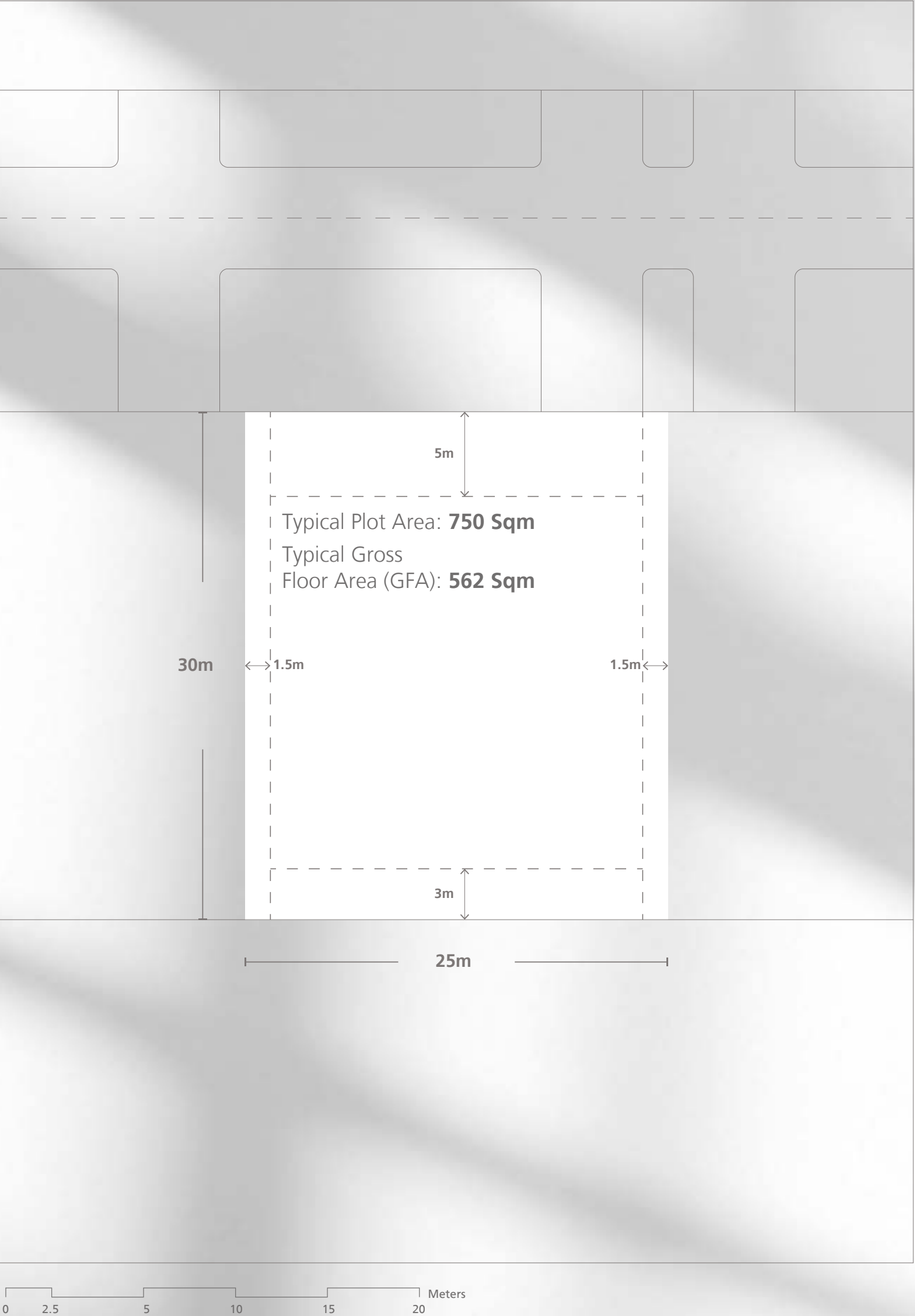
DISCLAIMER: This plan is reproduced for illustrative purposes as an example of a typical plot layout and Aldar makes no representation of warranty in relation to any of the information shown.



RESIDENTIAL LAND
PLAN TYPE B



DISCLAIMER: This plan is reproduced for illustrative purposes as an example of a typical plot layout and Aldar makes no representation of warranty in relation to any of the information shown.



RESIDENTIAL LAND
PLAN TYPE C



DISCLAIMER: This plan is reproduced for illustrative purposes as an example of a typical plot layout and Aldar makes no representation of warranty in relation to any of the information shown.







MEET THE NEIGHBOURS



Abu Dhabi International Airport

The award-winning airport is your gateway to the world, and only five minutes from home.



Al Forsan International Sports Resort

From horse riding and water skiing, to archery and race car driving, there's something for every intrepid adventurer.



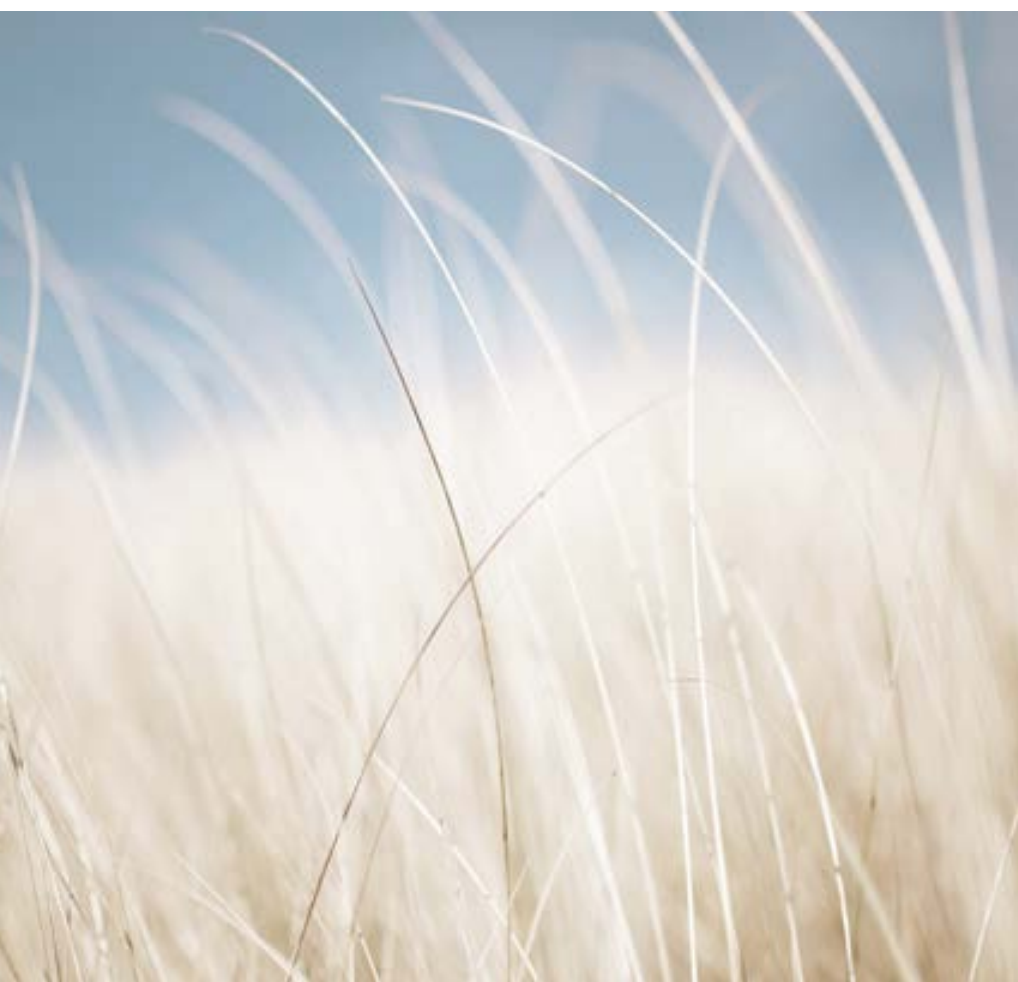
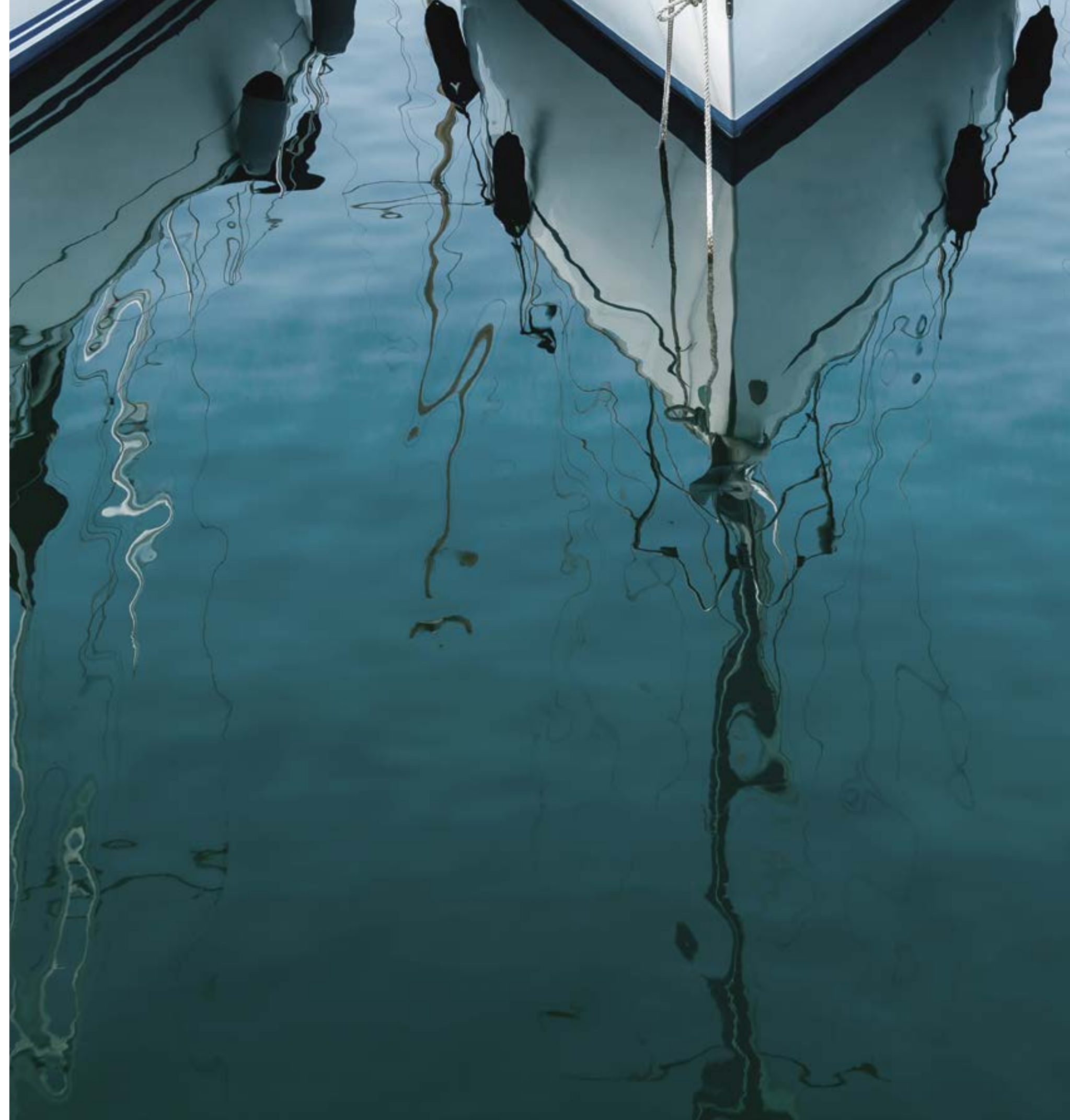
Mafraq Hospital

A specialised hospital in the fastest growing area of Abu Dhabi, with 451 beds and 2000 employees providing the very best care. This care has been recognized and presented the Sheikh Khalifa Excellence Award and the EFQM quality standard.

A LIFE OF LEISURE

Free time is precious.
And making the most of it calls
for some important decisions.
Park or pool? Shop or surf?
Racket or club?

YAS ISLAND LIVING



On Yas Island, decision making is a breeze. Because here you can have it all, without ever leaving the island. Dive into the cool Arabian Gulf off Yas Beach and navigate the winding mangroves, then browse the latest collections at Yas Mall before sipping a sundowner in the buzzing Yas Marina. Better yet, start the day early with 18 holes at

the world-renowned Yas Links Golf Course, enjoy lunch in the shade at Yas Gateway Park, and spend the afternoon chasing thrills and spills at Ferrari World, Warner Bros or Yas Waterworld. Whatever you're looking for – the perfect swing, a big splash or a simple sunset walk – Yas Island has everything you need to satisfy your life of leisure.



FLOORPLANS





3 BEDROOMS

MODERN

CONTEMPORARY



3 BED MODERN
INFRONT



3 BED MODERN
BACK

3 BEDROOM MODERN + MAID’S ROOM

INTERNAL SELLABLE AREA: 304 SQM | BALCONY+ TERRACE: 13



GROUND FLOOR



FIRST FLOOR

Disclaimer: This plan is reproduced for illustrative purposes as an example of a typical plot layout and Aldar makes no representation of warranty in relation to any of the information shown.



3 BED CONTEMPORARY
INFRONT



3 BED CONTEMPORARY
INFRONT

3BEDROOM CONTEMPORARY + MAID’S ROOM

INTERNAL SELLABLE AREA: 302 SQM | BALCONY+ TERRACE: 17



GROUND FLOOR



FIRST FLOOR

Disclaimer: This plan is reproduced for illustrative purposes as an example of a typical plot layout and Aldar makes no representation of warranty in relation to any of the information shown.



4 BEDROOMS

MODERN

CONTEMPORARY



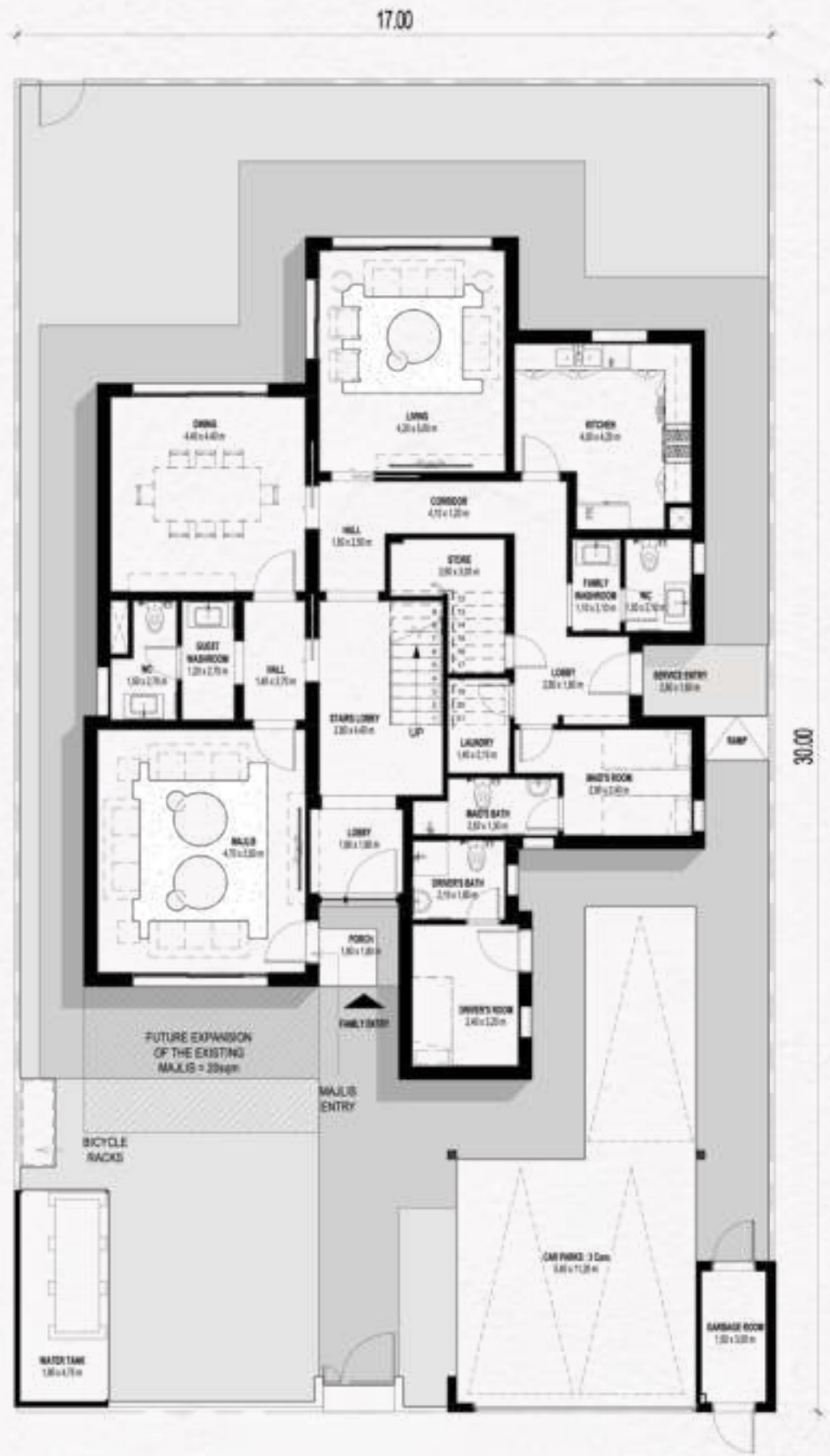
4 BED MODERN
INFRONT



4 BED MODERN
BACK

4 BEDROOM MODERN+ MAID’S ROOM

INTERNAL SELLABLE AREA: 372 SQM | BALCONY+ TERRACE: 17



GROUND FLOOR

Disclaimer: This plan is reproduced for illustrative purposes as an example of a typical plot layout and Aldar makes no representation of warranty in relation to any of the information shown.



FIRST FLOOR



4 BED CONTEMPORARY
INFRONT



4 BED CONTEMPORARY
BACK

4 BEDROOM CONTEMPORARY + MAID’S ROOM

INTERNAL SELLABLE AREA: 374 SQM | BALCONY+ TERRACE: 18



GROUND FLOOR

Disclaimer: This plan is reproduced for illustrative purposes as an example of a typical plot layout and Aldar makes no representation of warranty in relation to any of the information shown.



FIRST FLOOR



5 BEDROOMS

MODERN

CONTEMPORARY



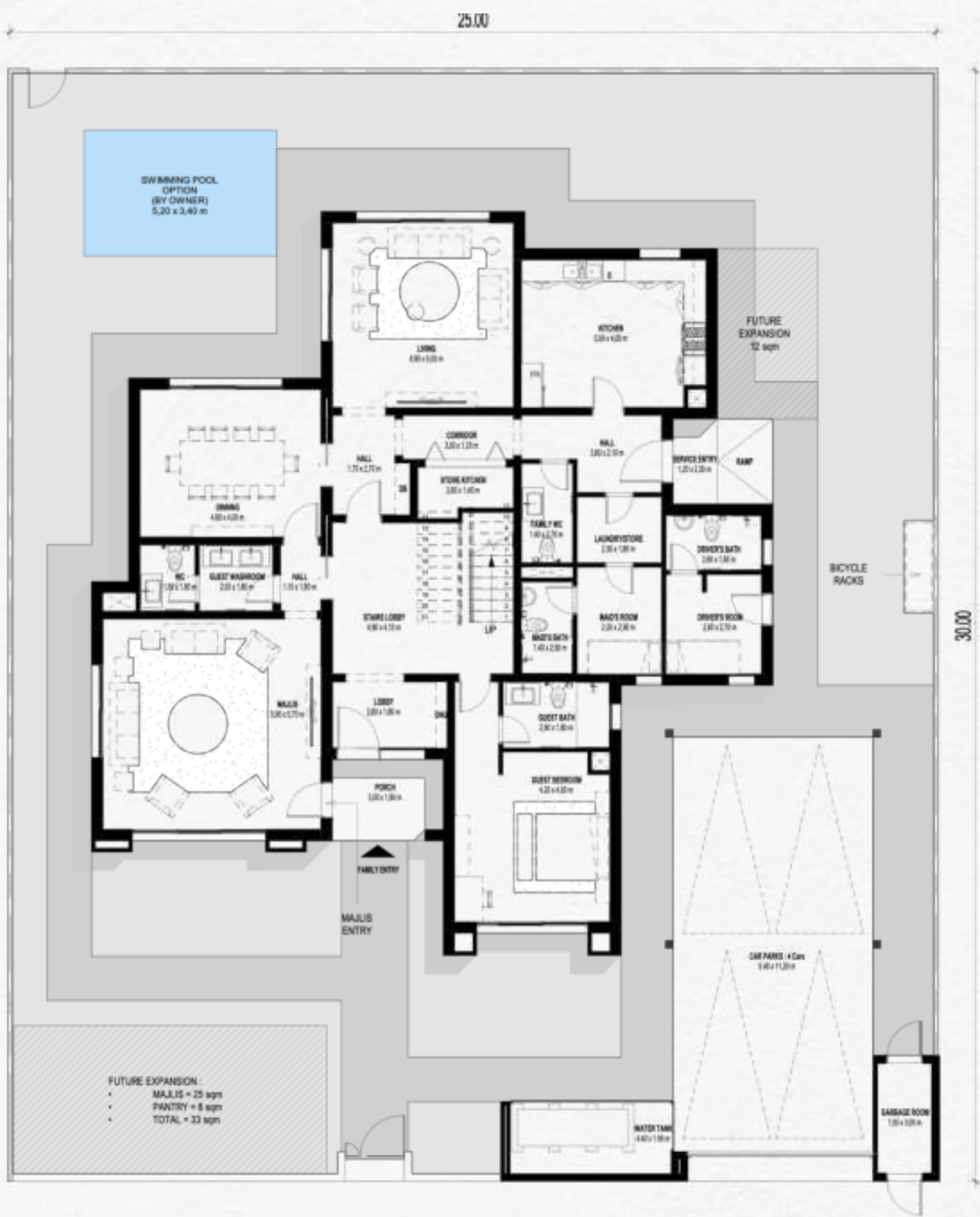
5 BED MODERN
INFRONT

A modern, multi-story house with a minimalist design, featuring large glass windows and balconies. The house is illuminated from within, showing a warm interior. The exterior is a light, neutral color. The house is surrounded by lush landscaping, including palm trees and other tropical plants. A large outdoor patio with a swimming pool is in the foreground. The patio is furnished with modern outdoor furniture, including sofas and a dining table. The sky is a deep blue, suggesting dusk or dawn. The overall atmosphere is serene and luxurious.

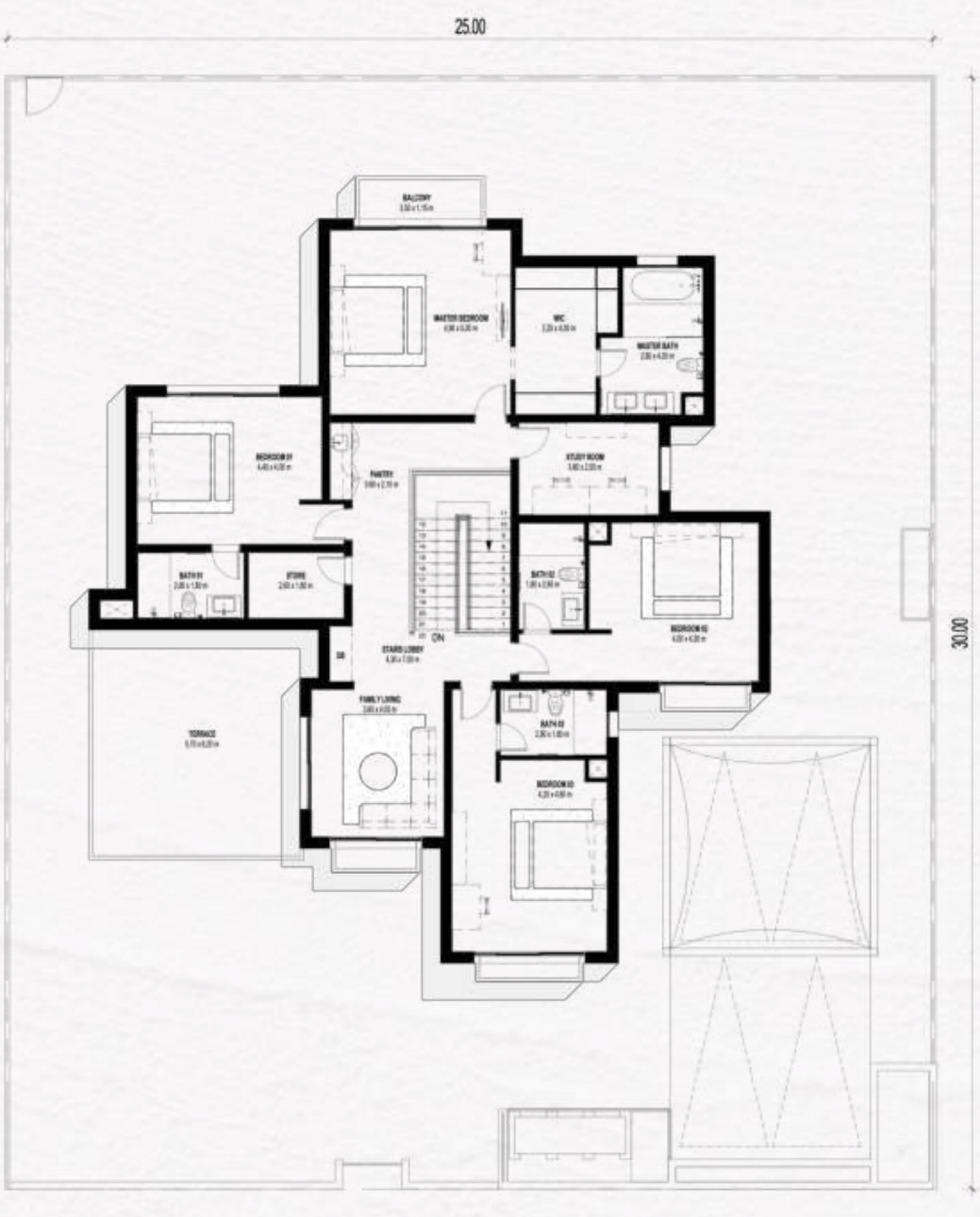
5 BED MODERN
BACK

5 BEDROOM MODERN+ MAID’S ROOM

INTERNAL SELLABLE AREA: 460 SQM | BALCONY+ TERRACE: 44



GROUND FLOOR



FIRST FLOOR

Disclaimer: This plan is reproduced for illustrative purposes as an example of a typical plot layout and Aldar makes no representation of warranty in relation to any of the information shown.



5 BED CONTEMPORARY
INFRONT



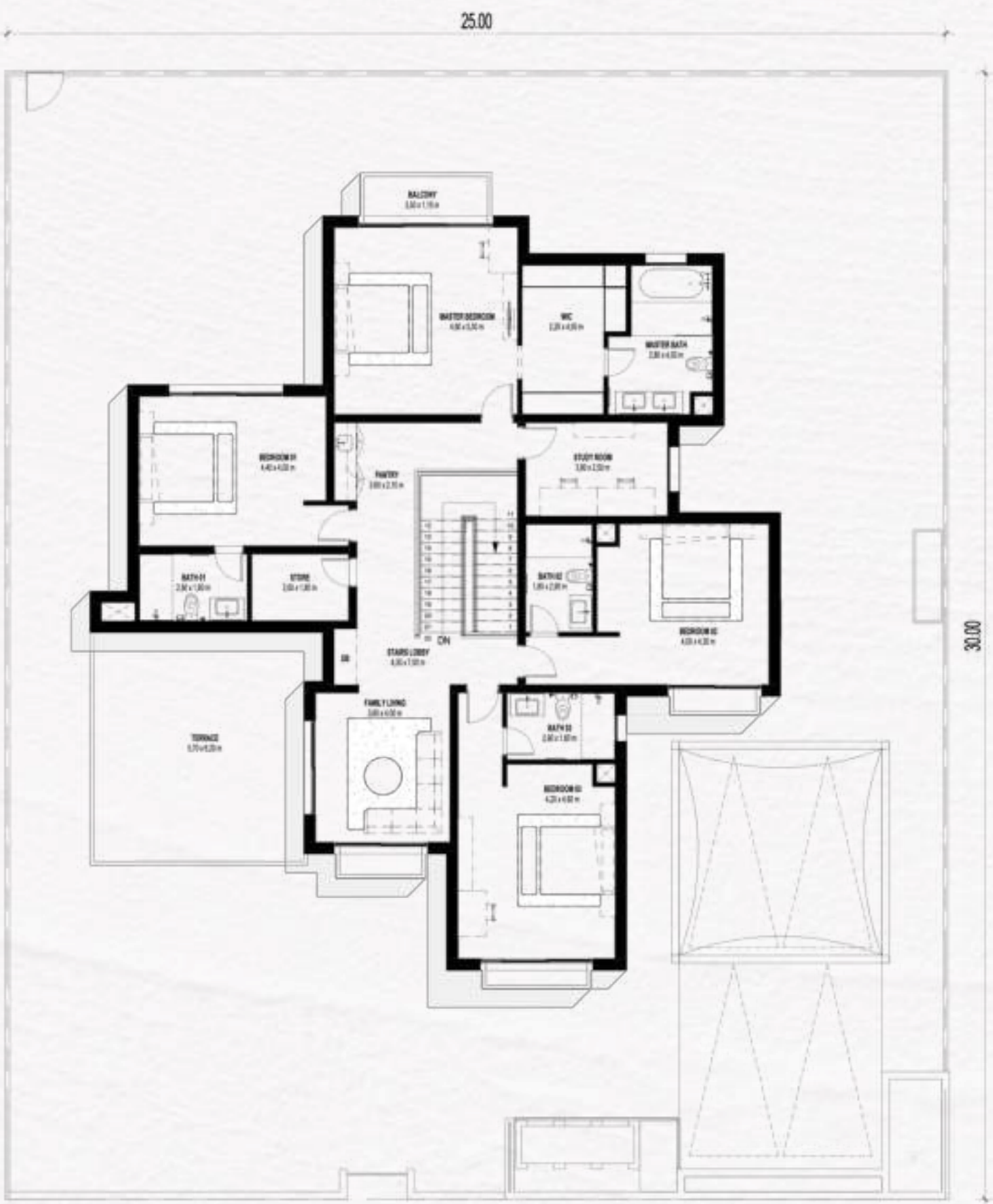
5 BED CONTEMPORARY
BACK

5 BEDROOM CONTEMPORARY+ MAID’S ROOM

INTERNAL SELLABLE AREA: 459 SQM | BALCONY+ TERRACE: 45



GROUND FLOOR



FIRST FLOOR

Disclaimer: This plan is reproduced for illustrative purposes as an example of a typical plot layout and Aldar makes no representation of warranty in relation to any of the information shown.



6 BEDROOMS

MODERN

CONTEMPORARY



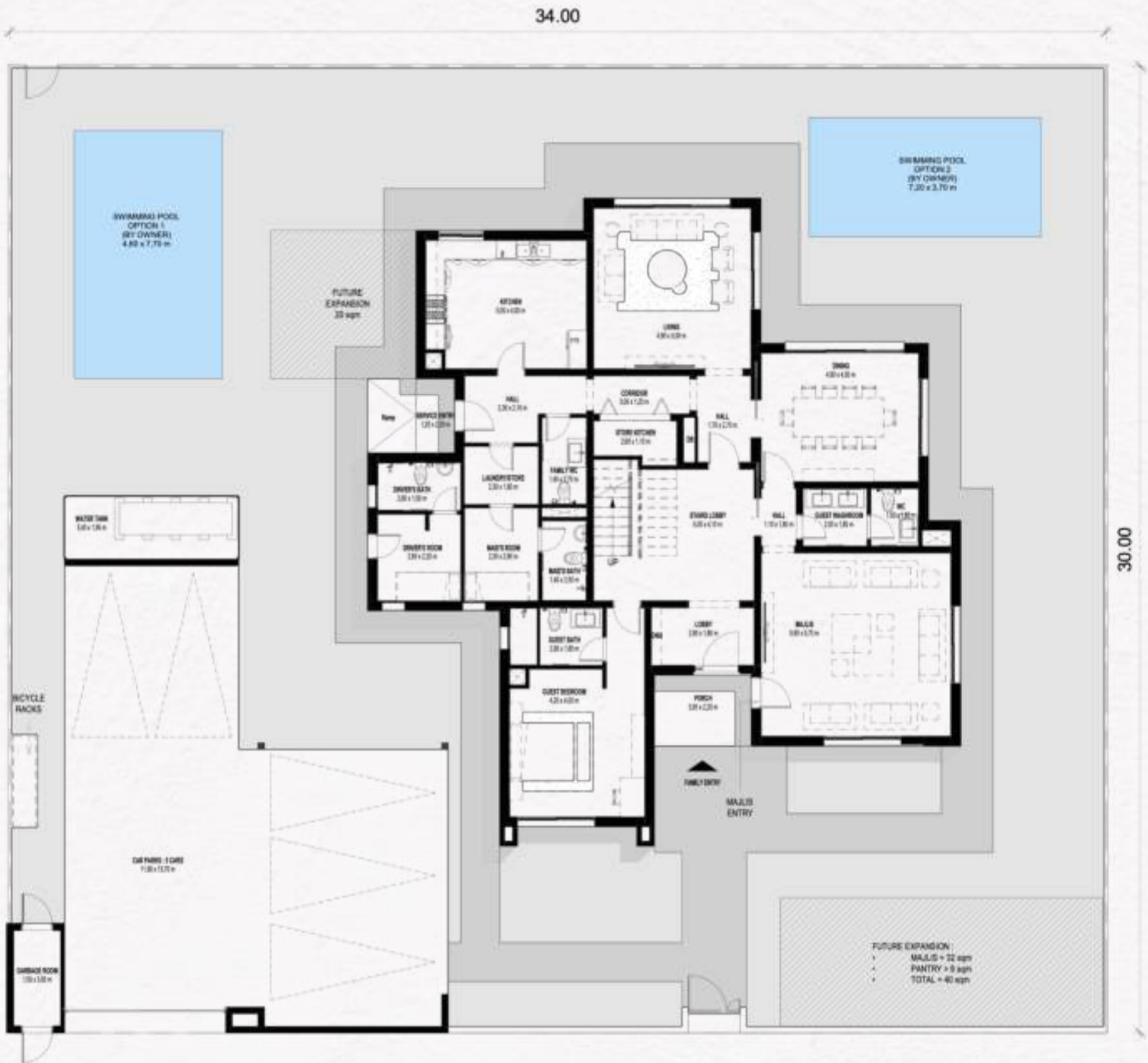
6 BED MODERN
INFRONT



6 BED MODERN
BACK

6 BEDROOM MODERN+ MAID’S ROOM

INTERNAL SELLABLE AREA: 494 SQM | BALCONY+ TERRACE: 8



GROUND FLOOR

Disclaimer: This plan is reproduced for illustrative purposes as an example of a typical plot layout and Aldar makes no representation of warranty in relation to any of the information shown.



FIRST FLOOR



6 BED CONTEMPORARY
INFRONT



6 BED CONTEMPORARY
BACK

6 BEDROOM CONTEMPORARY+ MAID’S ROOM

INTERNAL SELLABLE AREA: 495 SQM | BALCONY+ TERRACE: 11 SQM



GROUND FLOOR

Disclaimer: This plan is reproduced for illustrative purposes as an example of a typical plot layout and Aldar makes no representation of warranty in relation to any of the information shown.



FIRST FLOOR





Pst.

Call **600 548 200**

www.propertyshopinvestment.com