



RADIANT
real estate

RADIANT VIEWZ I

PART OF RADIANT SQUARE



Elevate Your Living
Experience.



About Radiant.

At Radiant Real Estate, we're dedicated to creating sustainable communities that enrich the lives of our residents and the surrounding neighborhoods. We aim to deliver high-quality properties that meet the needs and aspirations of our customers, while also contributing to the overall well-being of the communities we serve. Our commitment to integrity, transparency, and excellence in all aspects of our business is reflected in everything we do, and we strive to be a trusted and respected partner for our customers, investors, and stakeholders.



Radiant Square: Iconic Towers with Stunning Views.

Radiant Square is an iconic mixed-use tower located in the heart of Reem Island. Offering stunning sea views and spacious office spaces, this development is the epitome of luxury living. With its 7 podiums and towers with up to 44 floors, Radiant Square is a testament to innovative design and construction, providing a unique and unparalleled experience for its residents and visitors alike. Whether you're looking for a duplex unit with a view of the sea or an office space that inspires productivity, Radiant Square has something for everyone.



—
Where Modern Living
Meets Radiant Style.

About Radiant Viewz I.

Radiant Views is a stunning development comprising of two connected buildings that offer spacious duplex residential units with a wide variety of stunning views overlooking Reem Island. With seven podiums and 28 floors in each building, residents can enjoy an elevated living experience in one of the most sought-after locations in Abu Dhabi. Whether you are looking for a comfortable home for your family or a spacious living area for yourself, Radiant Views offers a range of luxurious options to suit your needs. With world-class amenities and exceptional design, this development is the perfect choice for those seeking a modern and cosmopolitan lifestyle.



—
A New Standard of Luxury Living.



Discover the Luxurious Lifestyle of Reem Island.

Reem Island is a vibrant and thriving community located in Abu Dhabi. This beautiful island is known for its luxurious living, world-class amenities, and stunning waterfront views. With a range of residential and commercial properties, Reem Island offers something for everyone, from families to young professionals. The community is well-connected with easy access to major highways, making it convenient to get to and from the city center. With its lush parks, trendy restaurants, and luxurious shopping centers, Reem Island is the perfect place to call home for those seeking a modern and cosmopolitan lifestyle in Abu Dhabi.

Landmarks Nearby:

- 📍 3 min to Reem Mall
- 📍 4 min to Reem Hospital
- 📍 1 min to Carrefour Market
- 📍 3 min to Al Fay Park
- 📍 3 min to Shams Boutik
- 📍 5min to Galleria Mall (Sea & Galleria Mall View)



— Coastal Living at its Finest.

Our Amenities.



+1200 Apartments



3 Swimming Pools



50 Commercial Spaces



Variety of Kids Areas



Cafes/Restaurants With Stunning Views



Gym





Premier Pool & Gym Facilities.

We believe in providing our residents with exceptional amenities that enhance their quality of life. Our pool and gym facilities are no exception. Our state-of-the-art gym is equipped with the latest fitness equipment and provides a range of exercise options for residents to stay healthy and active. Meanwhile, our swimming pool offers a refreshing escape from the city heat, with a stunning view of the surrounding area. Whether you're looking to start your day with a workout or unwind after a long day at work, our pool and gym facilities provide the perfect space for you to achieve your fitness goals.



—
**Relax and Recharge:
Enjoy the Pool & Gym at Radiant Towers.**

Connecting Lobbies.

At Radiant Real Estate, we understand that convenience and comfort are essential for our residents. Our buildings feature well-designed connecting lobbies that provide a seamless transition between indoor and outdoor spaces, creating a welcoming atmosphere for residents and guests. Additionally, our high-speed elevators provide easy and efficient access to all floors, ensuring that residents can move around the building with ease. With a focus on quality and innovation, our buildings are designed to provide a seamless living experience, with every detail carefully considered to ensure the utmost convenience and comfort for our residents.



A Grand Lobby for
a Luxurious Lifestyle.



Living Area.

At Radiant Square, we understand that a comfortable and luxurious living experience is essential for our residents. Our living areas are designed to provide a sense of space and openness, with ample natural light and stunning views of the surrounding area. Whether you're relaxing with family or entertaining guests, our living areas provide the perfect space to unwind and enjoy life to the fullest. With a focus on high-quality finishes and modern design, Radiant Square offers an unparalleled living experience that is both stylish and functional.





At Home in Comfort: Relaxing and Spacious Bedrooms by Design.

A bedroom is a personal sanctuary where you can relax, unwind, and recharge. At our properties, we prioritize the comfort and wellbeing of our residents. Each bedroom is designed with spaciousness, natural light, and high-quality materials to ensure a restful and rejuvenating night's sleep. Our range of bedroom configurations caters to individual preferences and needs, with options for studios, one-, two-, or multi-bedroom apartments. Whether you need a peaceful retreat from a busy day or a cozy spot for reading, we provide a comfortable and stylish space that feels like home.

Luxurious Finishing Brands for Unmatched Comfort.

Radiant Square offers luxurious living spaces with high-end finishes and top-of-the-line appliances. The bathrooms feature elegant tiling and fixtures from Villeroy and Boch, Hansgrohe, and RAK, while the kitchens are equipped with sleek ELBA appliances.

- Villeroy and Boch
- Hansgrohe
- ELBA
- RAK
- MK

We believe that these brands, with their reputation for quality and innovation, help us provide the best possible living experience for our residents.

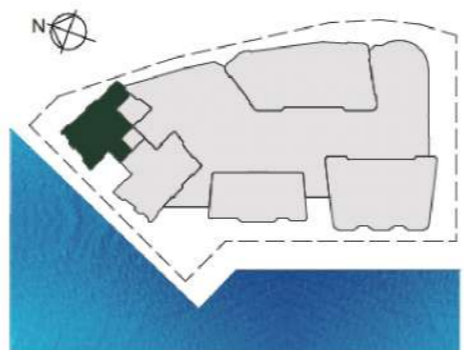


—
For Ultimate Comfort.

Overall Floorplans.

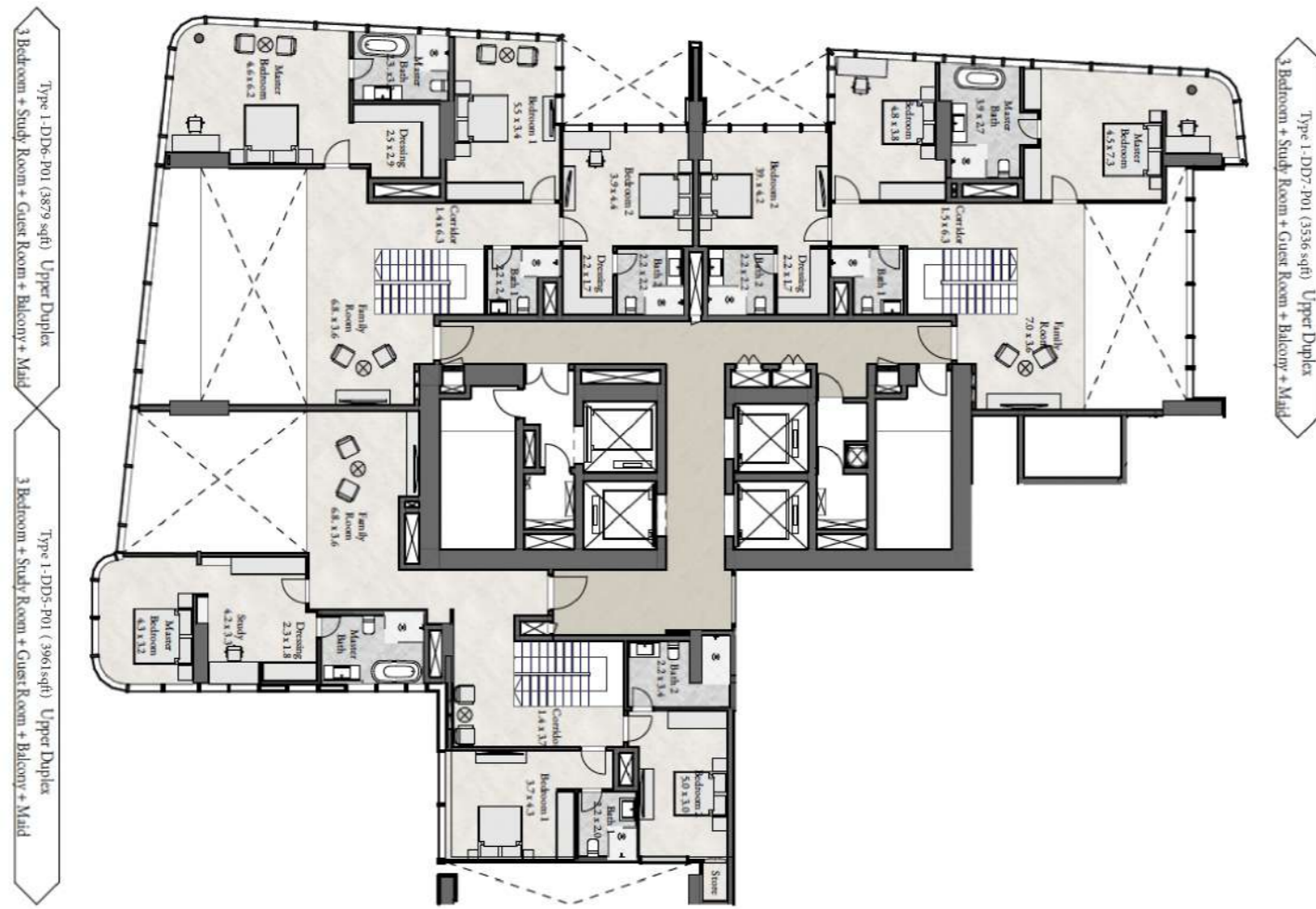
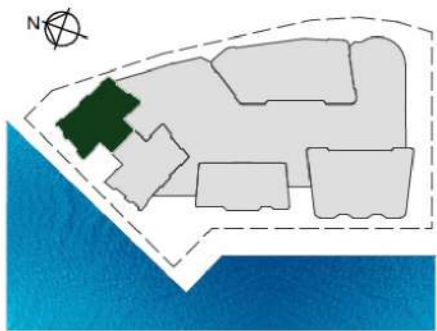


TYPICAL P01 - P03 - P05



Type 1-DD6-P01 (3879 sqft) Lower Duplex
3 Bedroom + Study Room + Guest Room + Balcony + Maid

Type 1-DD5-P01 (3961sqft) Lower Duplex
3 Bedroom + Study Room + Guest Room + Balcony + Maid

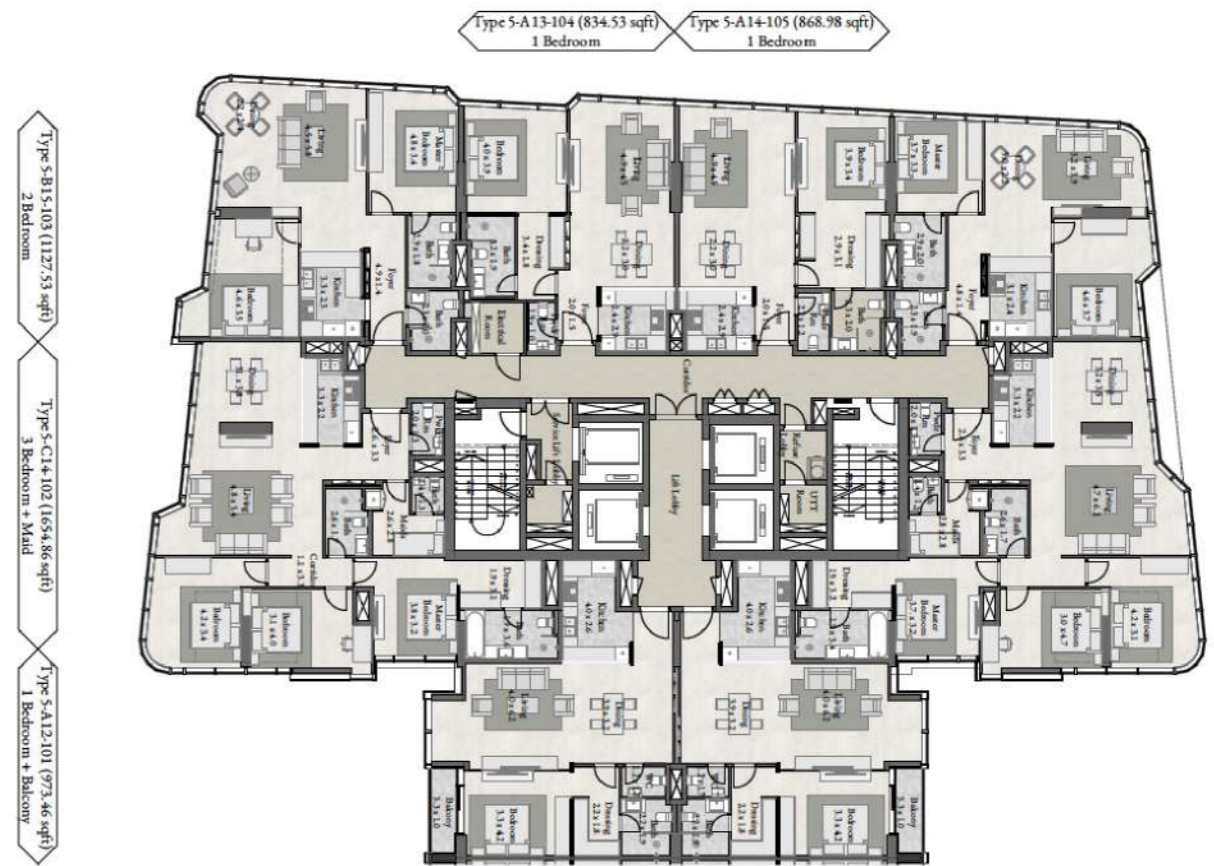
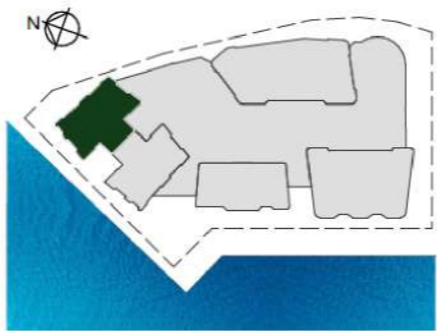


Type 1-DD6-P01 (3879 sqft) Upper Duplex
3 Bedroom + Study Room + Guest Room + Balcony + Maid

Type 1-DD5-P01 (3961 sqft) Upper Duplex
3 Bedroom + Study Room + Guest Room + Balcony + Maid

TYPICAL P01 - P03 - P05

Type 1-DD7-P01 (3556 sqft) Upper Duplex
3 Bedroom + Study Room + Guest Room + Balcony + Maid



Type 5-B15-103 (1127.53 sqft)
2 Bedroom

Type 5-C14-102 (1654.86 sqft)
3 Bedroom + Maid

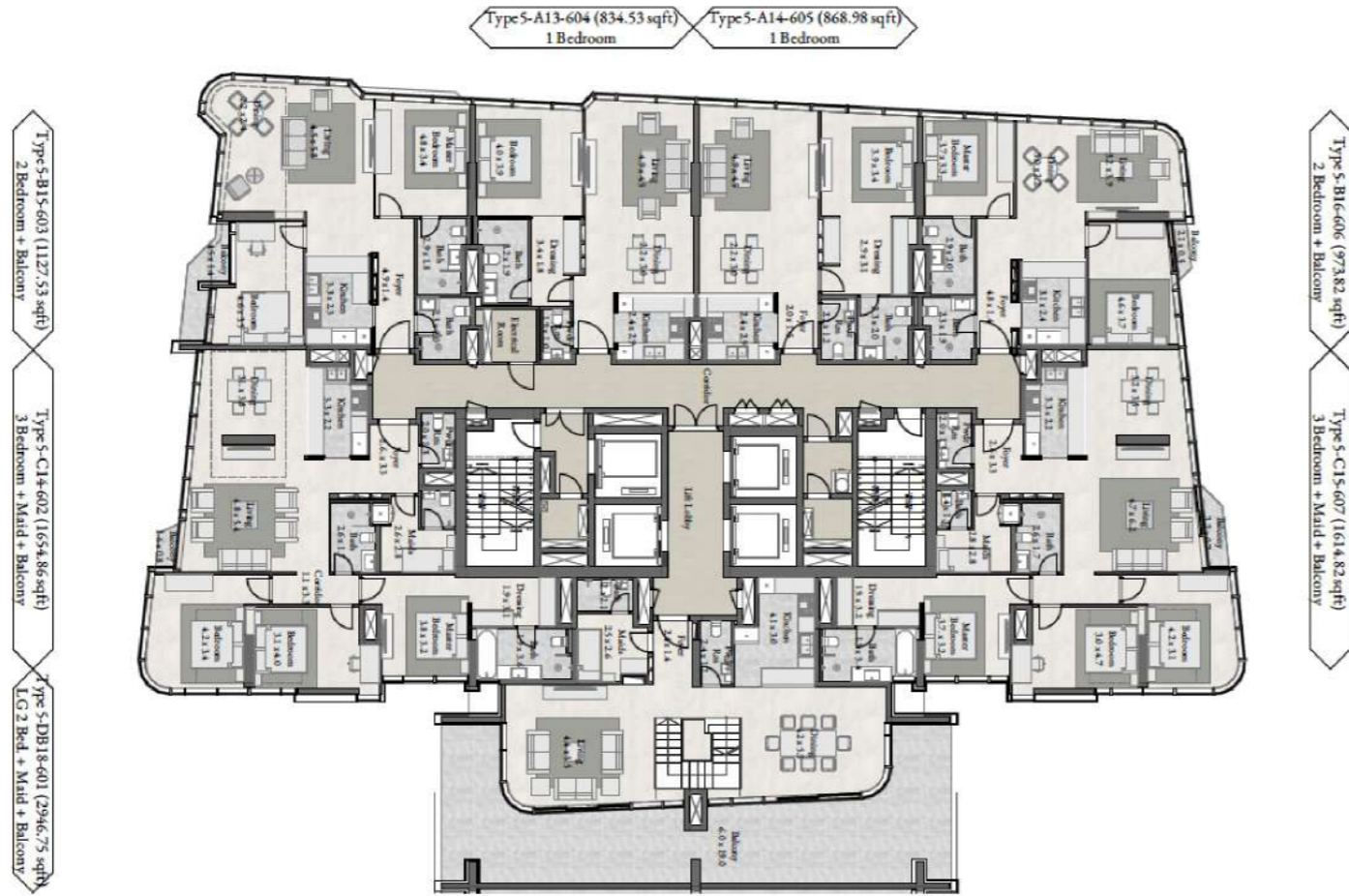
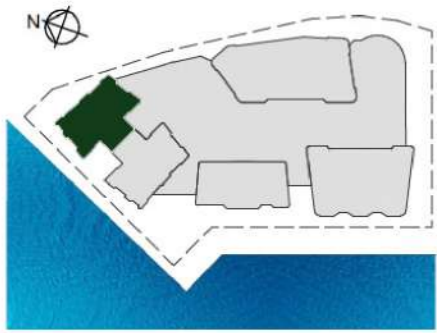
Type 5-A12-101 (973.46 sqft)
1 Bedroom + Balcony

TYPICAL L01 - L05 & L10 - L14

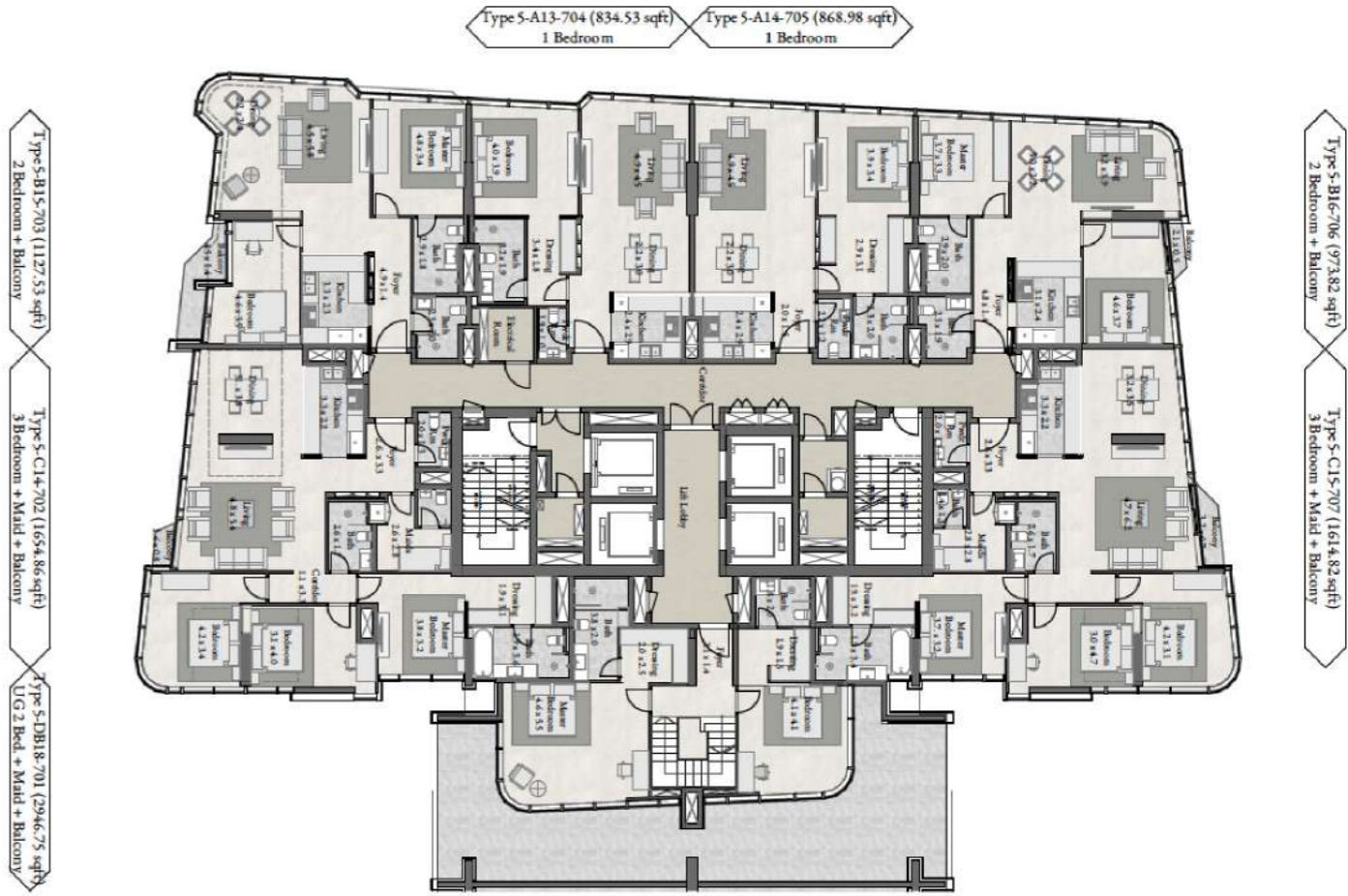
Type 5-B16-106 (973.82 sqft)
2 Bedroom

Type 5-C15-107 (1614.82 sqft)
3 Bedroom + Maid

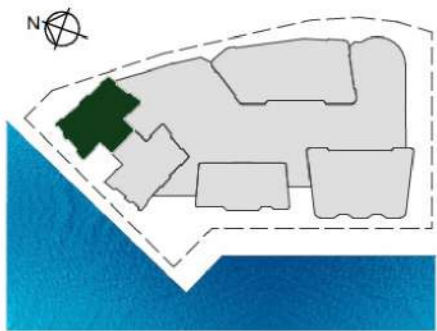
Type 5-A15-108 (986.31 sqft)
1 Bedroom + Balcony



TYPICAL L06 & L08

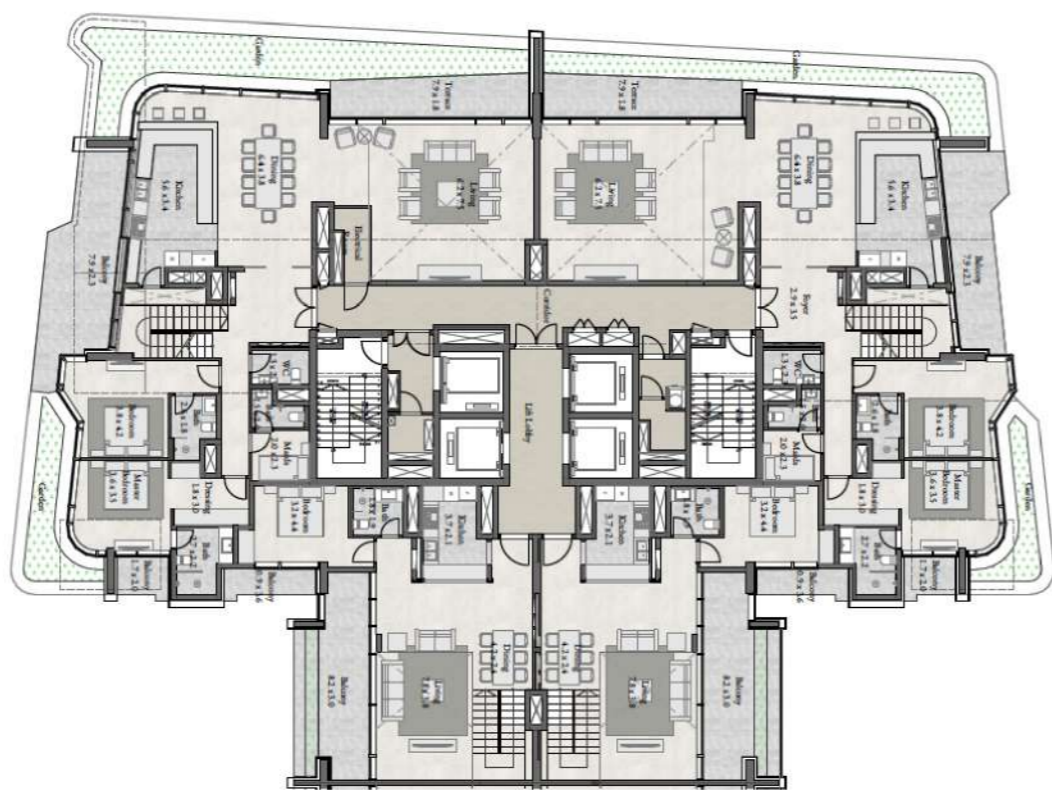


TYPICAL L07 & L09



Type 5-DE3-1502 (4393.72 sqft) Lower Ground
5 Bedroom + Maid + 2 Balcony + Garden

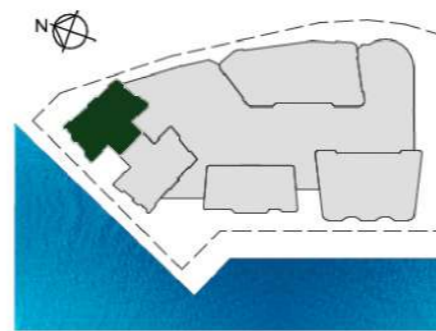
Type 5-DC17-1501 (2159.26 sqft)
LG 3 Bedroom + 2 Balcony



TYPICAL L15

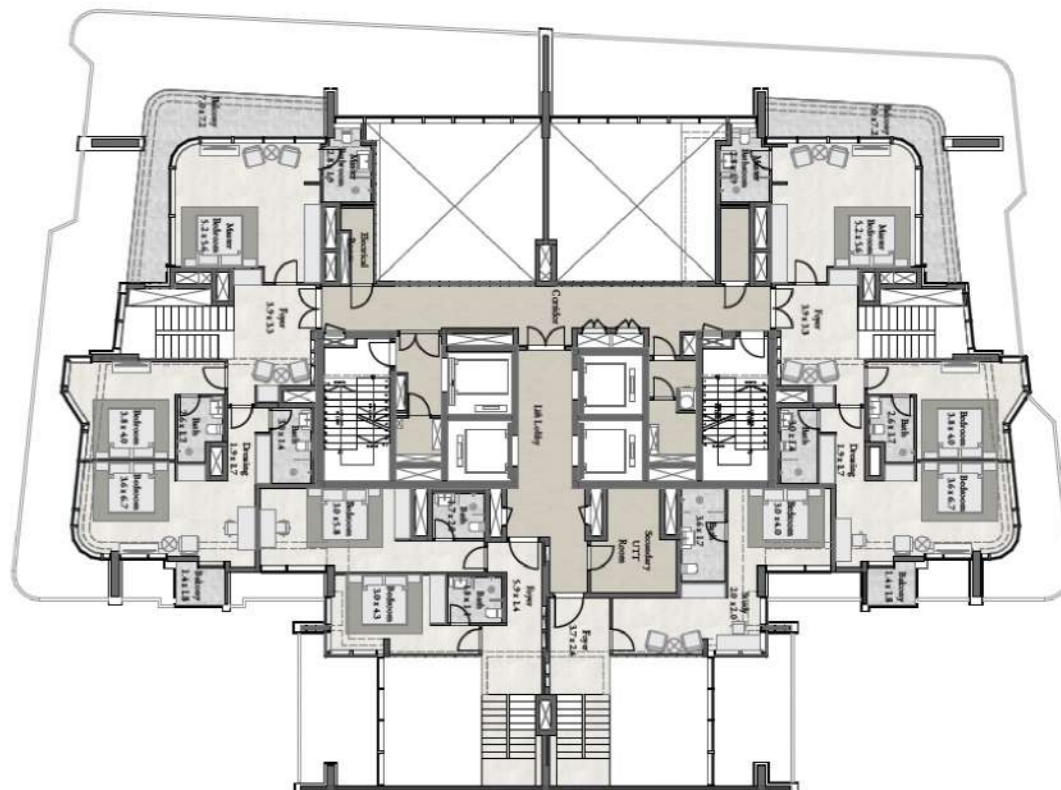
Type 5-DE4-1503 (4337.85 sqft) Lower Ground
5 Bedroom + Maid + 2 Balcony + Garden

Type 5-DB20-1504 (1945.38 sqft)
LG 2 Bedroom + 2 Balcony



Type 5-DE3-1502 (4393.72 sqft) Upper Ground
5 Bedroom + Maid + 2 Balcony + Garden

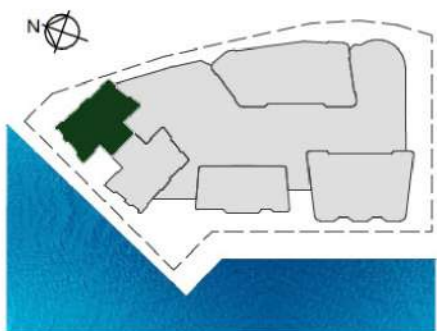
Type 5-DC17-1501 (2159.26 sqft)
LG 3 Bedroom + 2 Balcony



TYPICAL L16

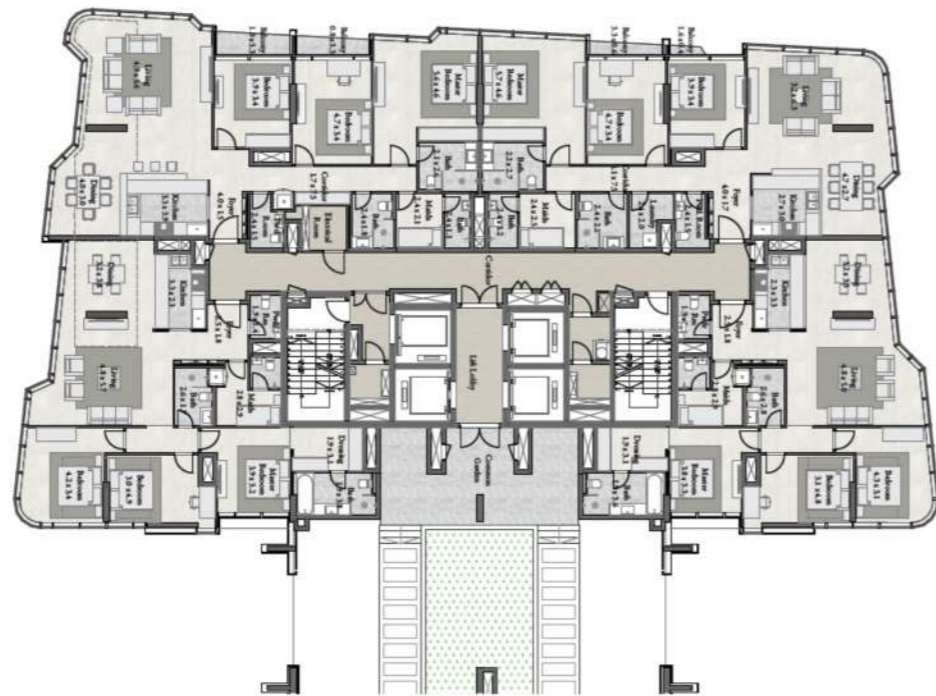
Type 5-DE4-1503 (4337.85 sqft) Upper Ground
5 Bedroom + Maid + 2 Balcony + Garden

Type 5-DB20-1504 (1945.38 sqft)
LG 2 Bedroom + 2 Balcony



Type 5-C20-1702 (1976.7 sqft)
3 Bedroom + Maid + 2 Bathrooms

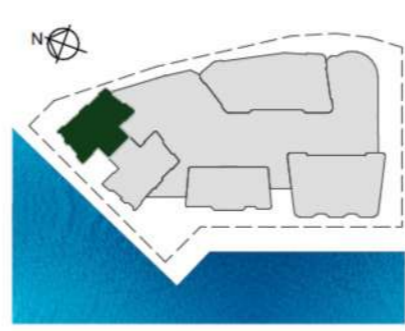
Type 5-C1+1701 (1654.86 sqft)
3 Bedroom + Maid



TYPICAL L17 & L28

Type 5-C21-1703 (1882.81 sqft)
3 Bedroom + Maid + 2 Bathrooms

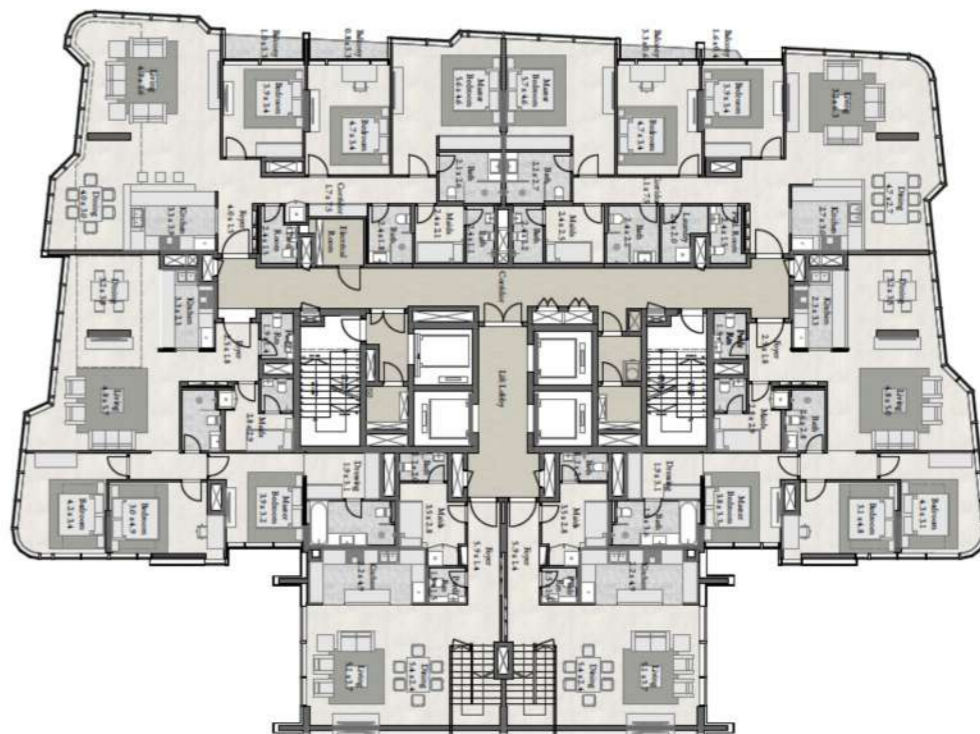
Type 5-C15-1704 (1614.82 sqft)
3 Bedroom + Maid



Type 5-C20-1803 (1976.7 sqft)
3 Bedroom + Maid + 2 Bathrooms

Type 5-C1+1802 (1654.86 sqft)
3 Bedroom + Maid

Type 5-DB23-1801 (1778 sqft)
LG 2 Bedroom + Maid

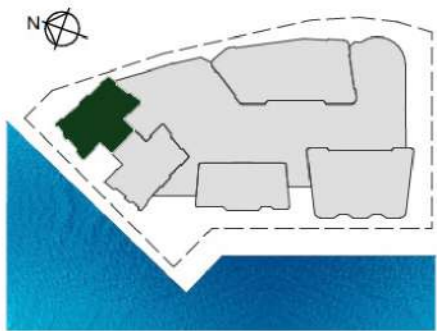


TYPICAL L18, L20, L24 & L26

Type 5-C21-1804 (1852.81 sqft)
3 Bedroom + Maid + 2 Bathrooms

Type 5-C15-1805 (1614.82 sqft)
3 Bedroom + Maid

Type 5-DB24-1806 (1798.23 sqft)
LG 2 Bedroom + Maid



Type 5-C20-1903 (1976.7 sqft)
3 Bedroom + Maid + 2 Balcony

Type 5-C14-1902 (1654.86 sqft)
3 Bedroom + Maid

Type 5-DB23-1801 (1778 sqft)
UG 2 Bedroom + Maid

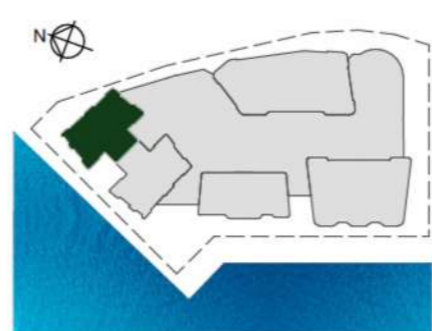


TYPICAL L19, L21, L25 & L27

Type 5-C21-1904 (1852.81 sqft)
3 Bedroom + Maid + 2 Balcony

Type 5-C15-1905 (1614.82 sqft)
3 Bedroom + Maid

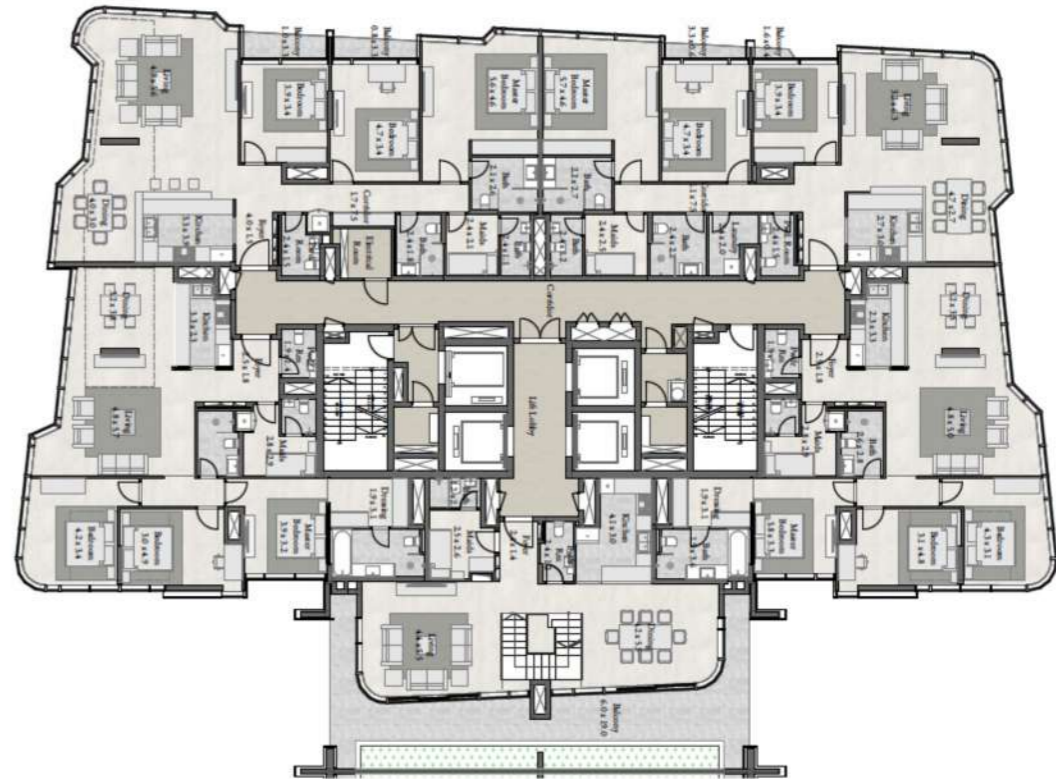
Type 5-DB24-1806 (1798.23 sqft)
UG 2 Bedroom + Maid



Type 5-C20-2203 (1976.7 sqft)
3 Bedroom + Maid

Type 5-C14-2202 (1654.86 sqft)
3 Bedroom + Maid

Type 5-DB26-2201 (2902.51 sqft)
UG 2 Bed + Maid

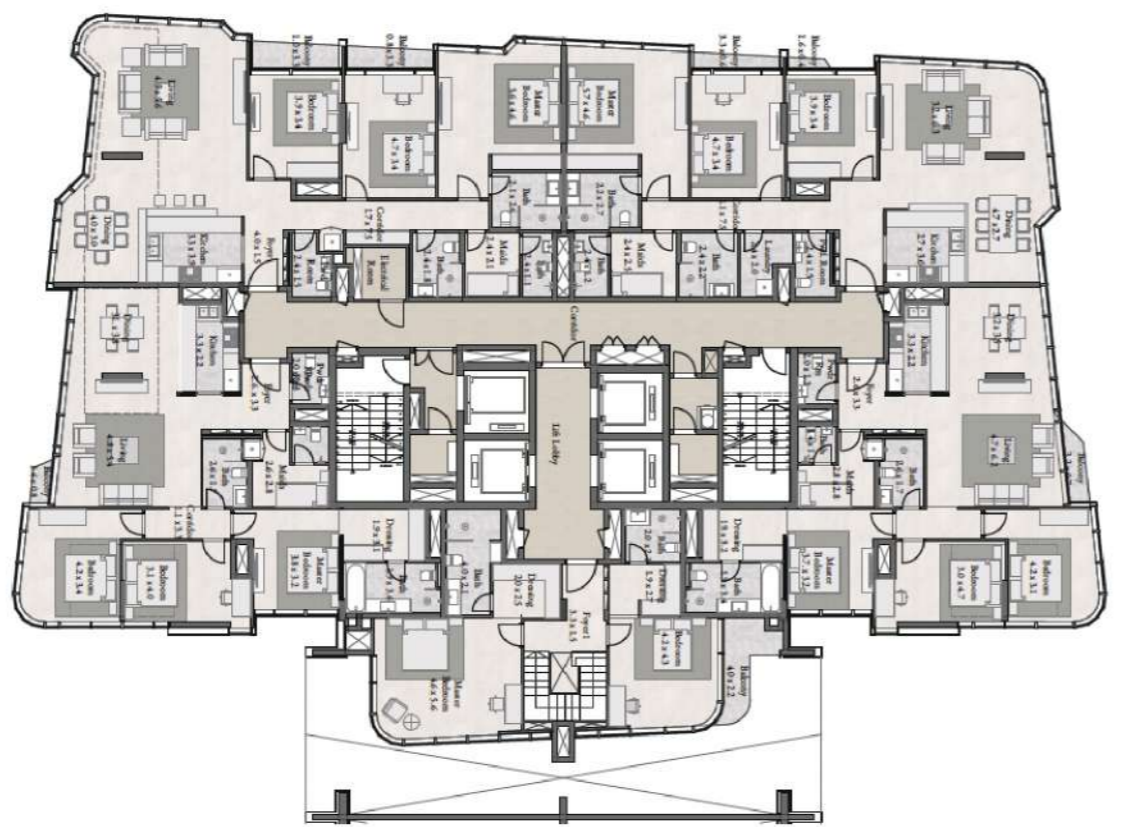


TYPICAL L22

Type 5-C21-2204 (1852.81 sqft)
3 Bedroom + Maid + 2 Balcony

Type 5-C15-2205 (1614.82 sqft)
3 Bedroom + Maid

Apartments Floorplans.



TYPICAL L23

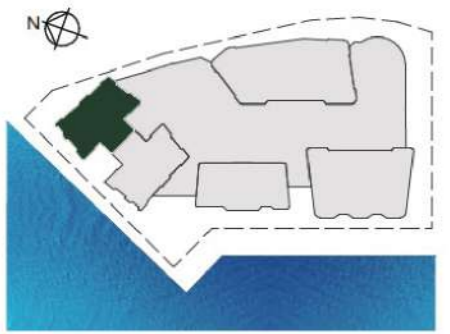
Type 5-C21-2-304 (1852.81 sqft)
3 Bedroom + Maid + 2 Balcony

Type 5-C1-2-302 (1614.82 sqft)
3 Bedroom + Maid + Balcony

Type 5-C20-2-303 (1976.7 sqft)
3 Bedroom + Maid

Type 5-C1-2-302 (1654.86 sqft)
3 Bedroom + Maid

Type 5-DB26-2201 (2902.51 sqft)
UG 2 Bedroom + Maid



**TYPE RVI-
PODIUM 01-03-05**

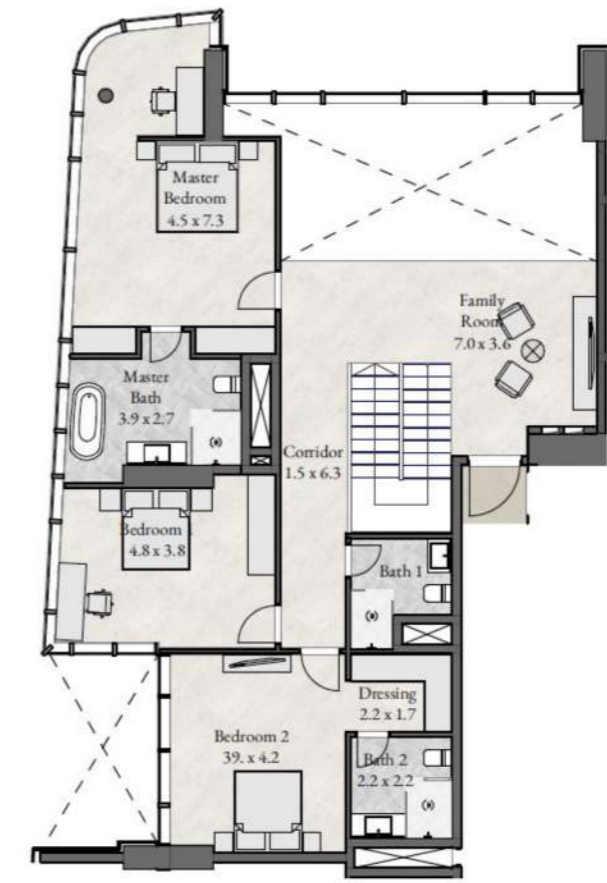
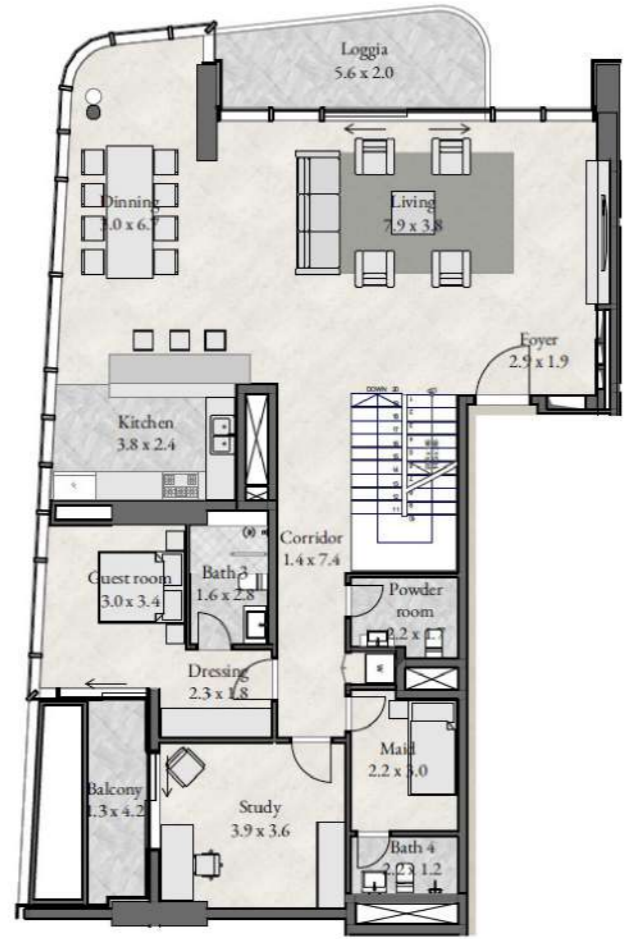
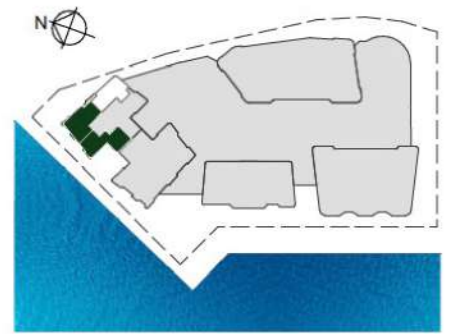
LOWER DUPLEX

3 BEDROOM + ST + GR + BAL + MA

PODIUM 01-03-05

UNIT 1-P01
1-P03 & 1-P05

3,536 sqft



**TYPE RVI-
PODIUM 02-04-06**

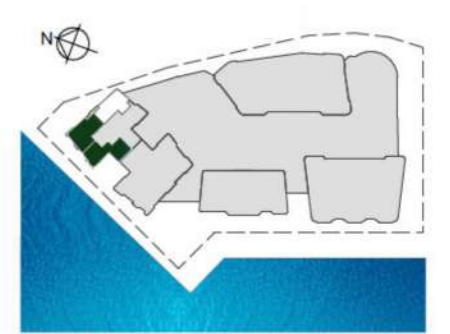
UPPER DUPLEX

3 BEDROOM + ST + GR + BAL + MA

PODIUM 02-04-06

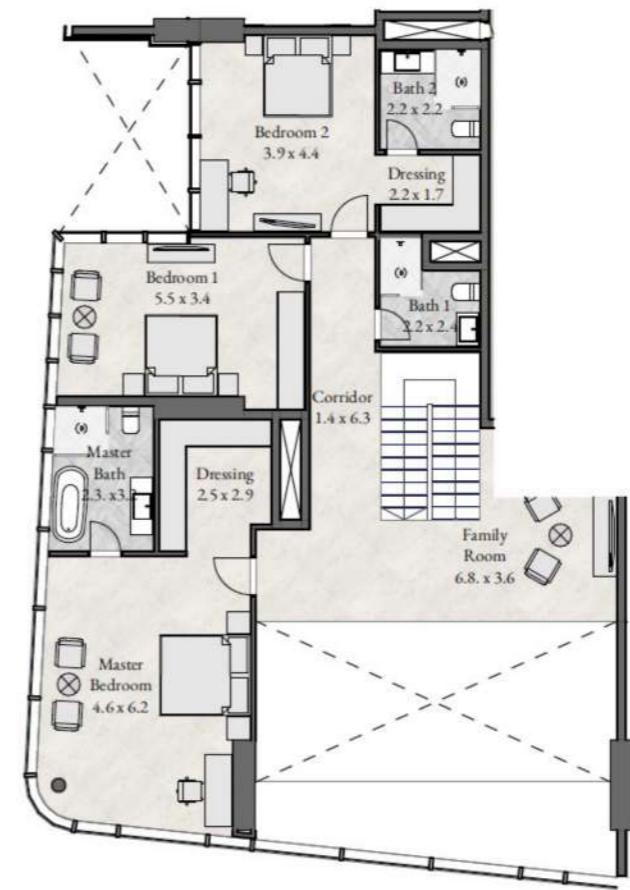
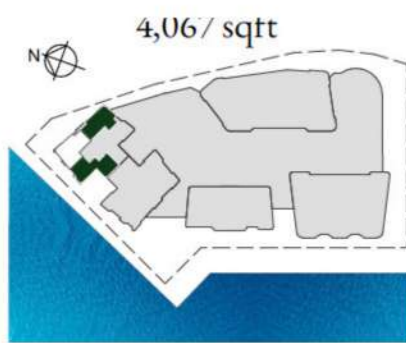
UNIT 1-P02
1-P04 & 1-P06

3,536 sqft



**TYPE RVI-
PODIUM 01-03-05**

LOWER DUPLEX
 3 BEDROOM + ST + GR + BAL + MA
 PODIUM 01-03-05
 UNIT 1-P01
 1-P03 & 1-P05
 3,879 sqft



**TYPE RVI-
PODIUM 02-04-06**

UPPER DUPLEX
 3 BEDROOM + ST + GR + BAL + MA
 PODIUM 02-04-06
 UNIT 1-P02
 1-P04 & 1-P06
 3,879 sqft



**TYPE RVI-
PODIUM 01-03-05**

LOWER DUPLEX
3 BEDROOM + ST + GR + BAL + MA

PODIUM 01-03-05
UNIT 1-P01
1-P03 & 1-P05

3,961 sqft

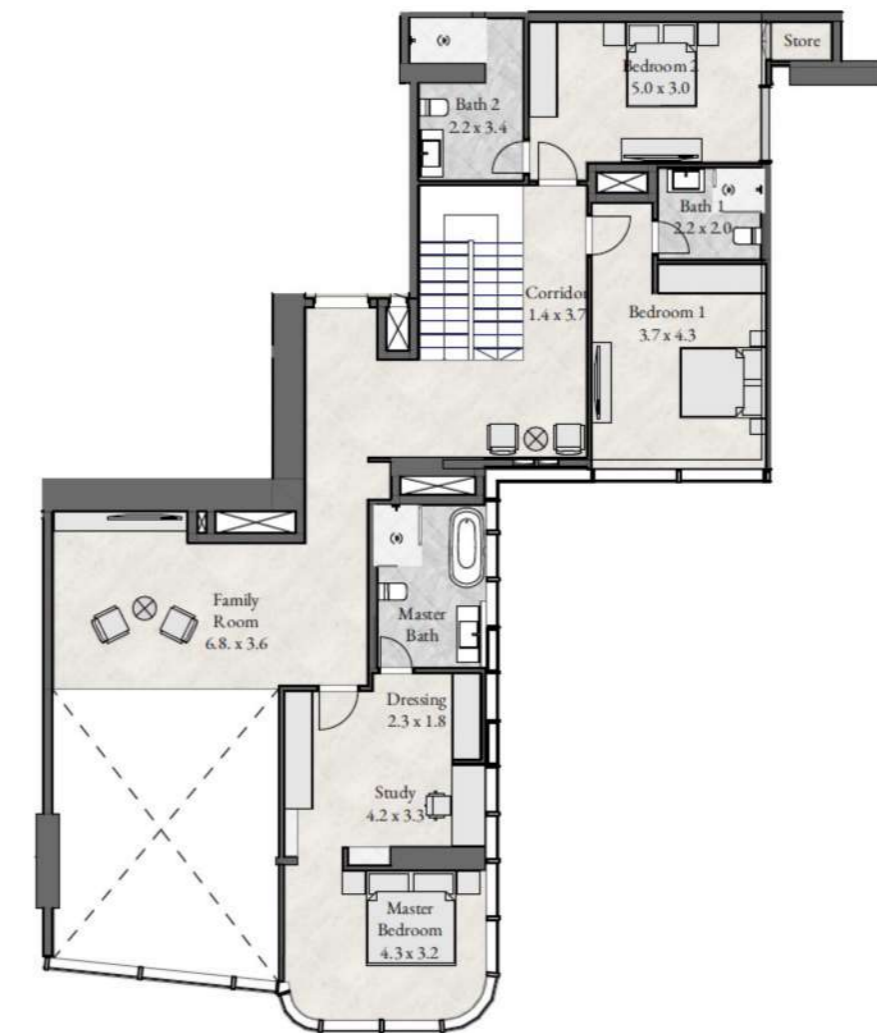


**TYPE RVI-
PODIUM 02-04-06**

UPPER DUPLEX
3 BEDROOM + ST + GR + BAL + MA

PODIUM 02-04-06
UNIT 1-P02
1-P04 & 1-P06

3,961 sqft



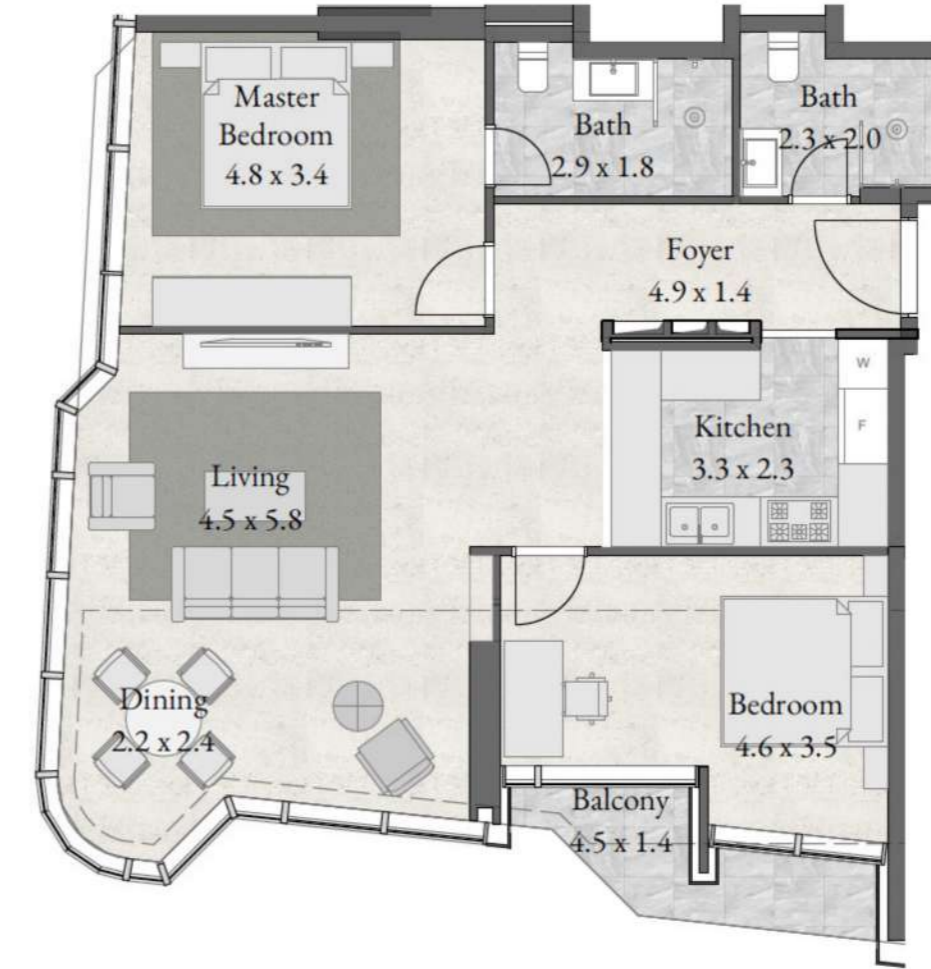
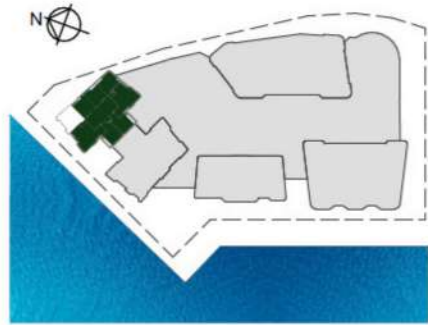
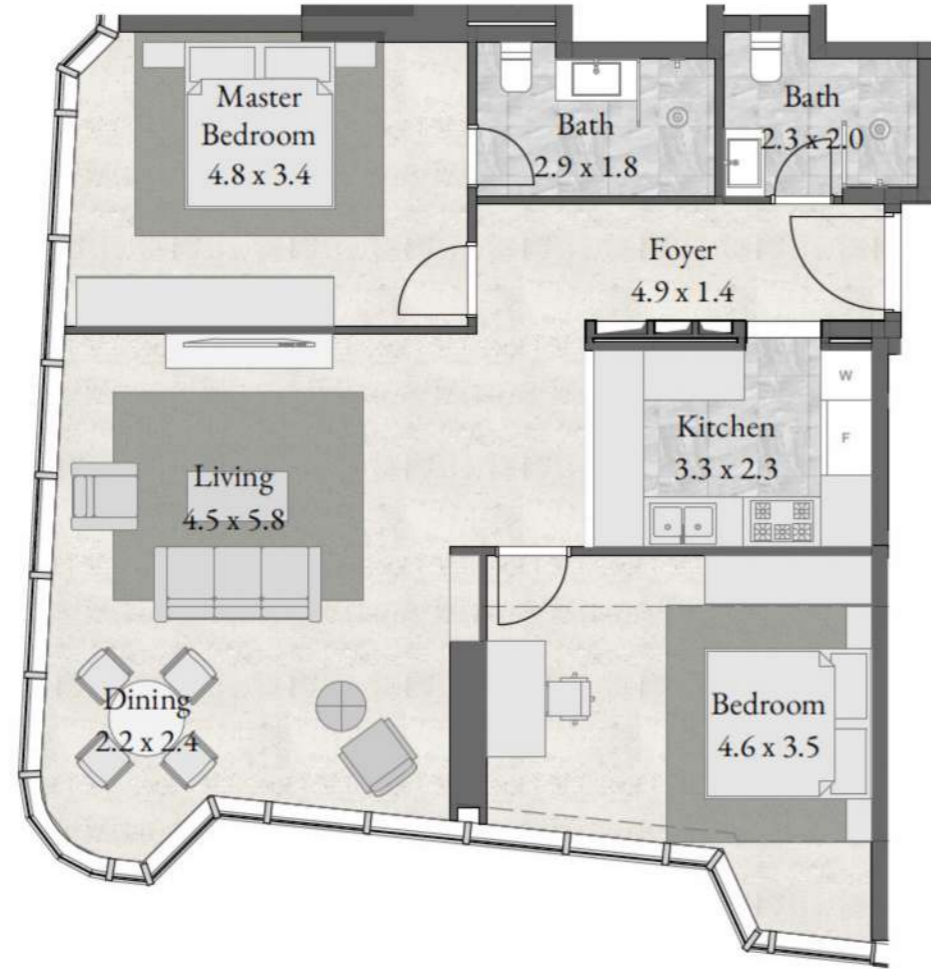
**TYPE RVI-
LEVEL 01-05 & 10-14**

2 BEDROOM

LEVEL 01-05 & 10-14

UNIT 103 - 503 & 1003 - 1403

1,103 sqft



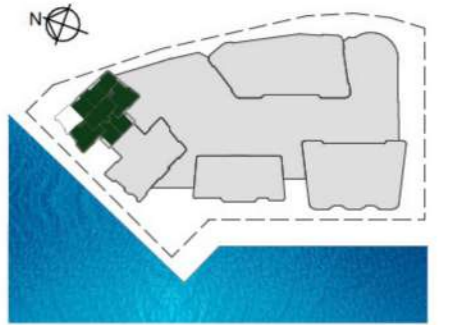
**TYPE RVI-
LEVEL 06-09**

2 BEDROOM + BALCONY

LEVEL 06-09

UNIT 603-903

1,103 sqft



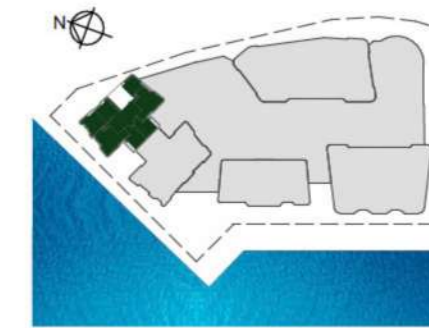
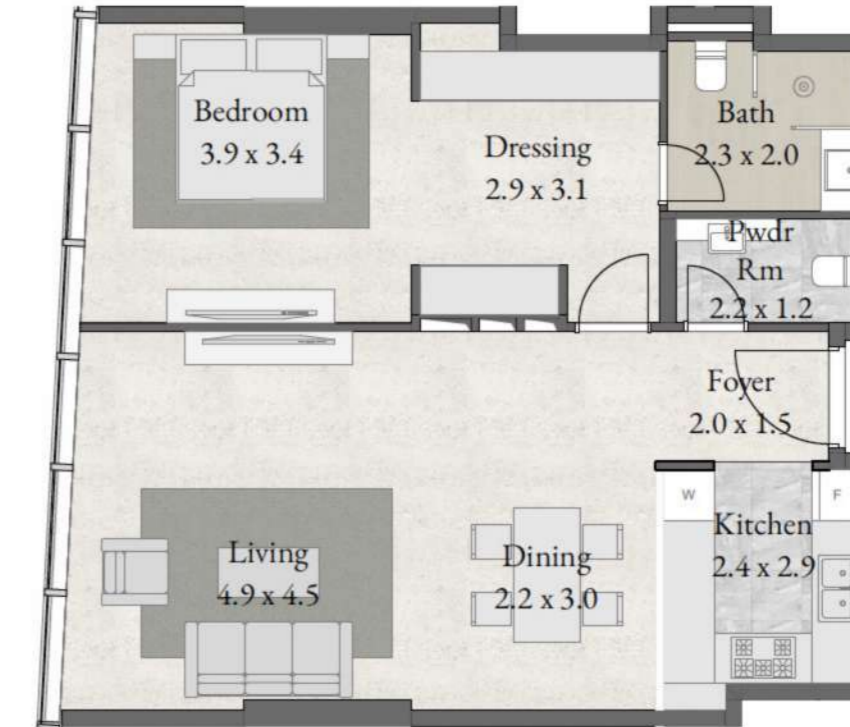
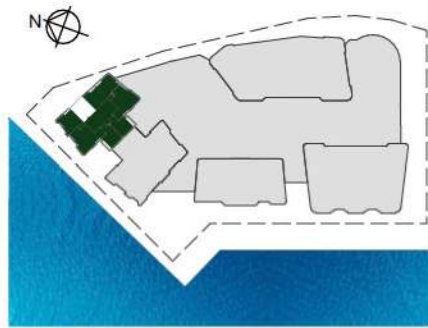
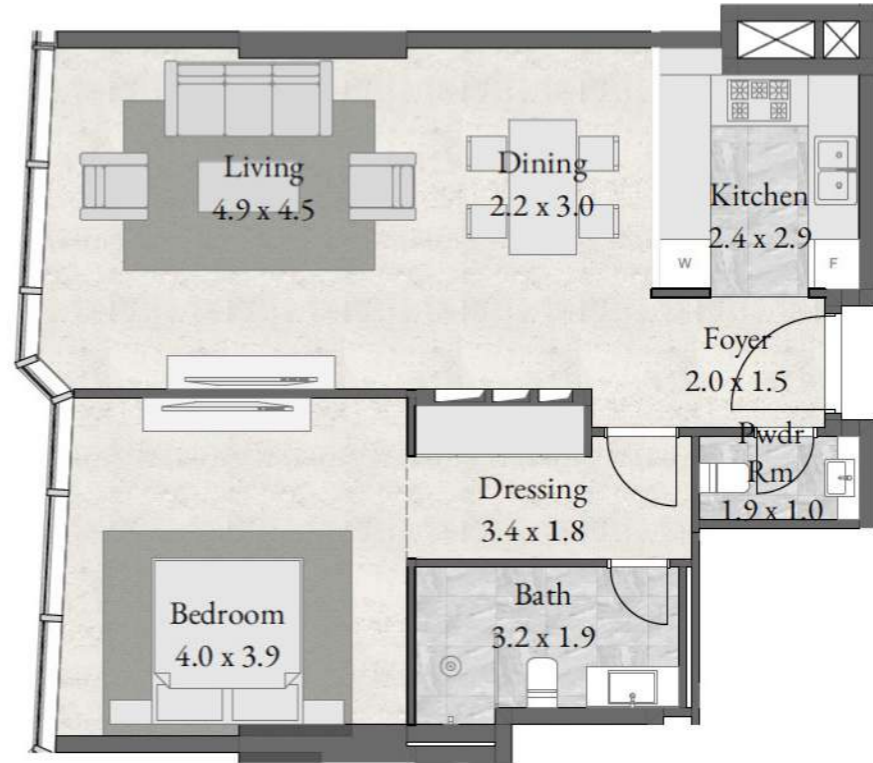
**TYPE RVI-
LEVEL 01-14**

1 BEDROOM

LEVEL 01-14

UNIT 104-1404

821 sqft



**TYPE RVI-
LEVEL 01-14**

1 BEDROOM

LEVEL 01-14

UNIT 105-1405

856 sqft

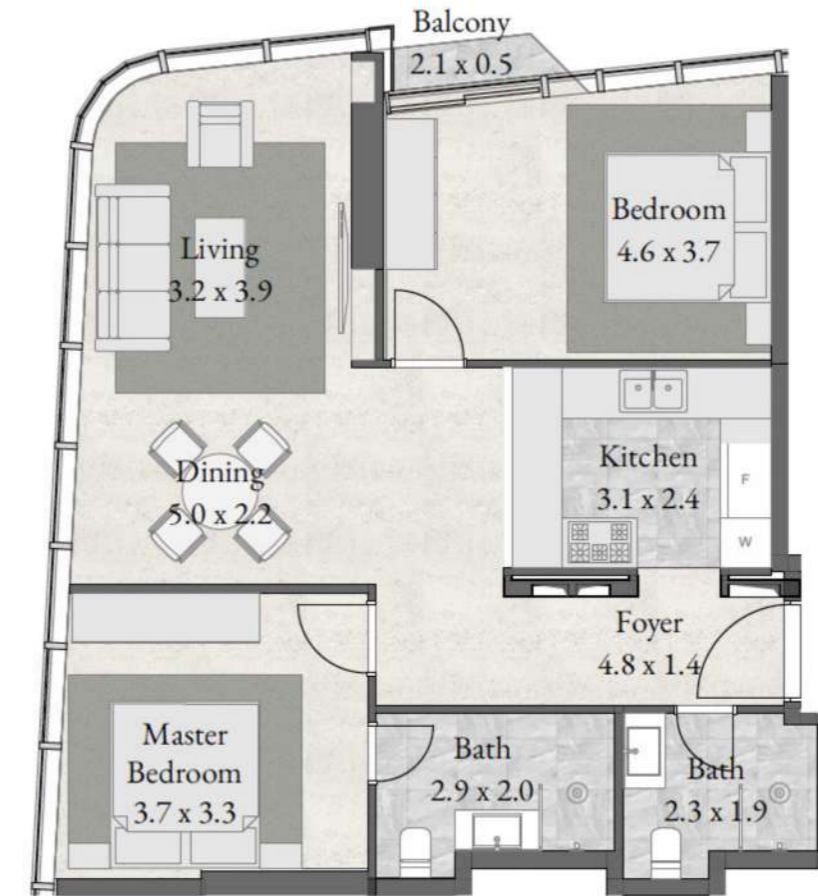
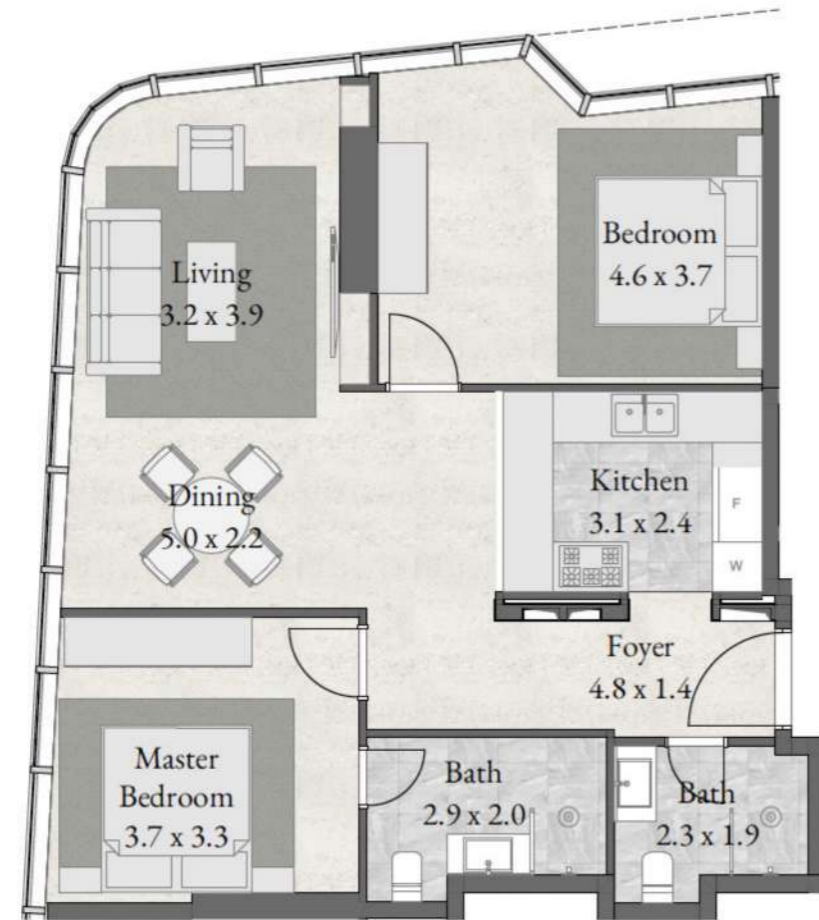
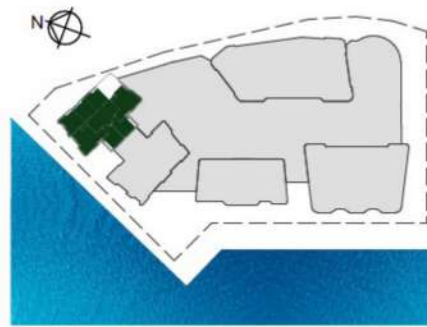
**TYPE RVI-
LEVEL 01-05-10-14**

2 BEDROOM

LEVEL 01-05-10-14

UNIT 106-506 & 1006-1406

949 sqft



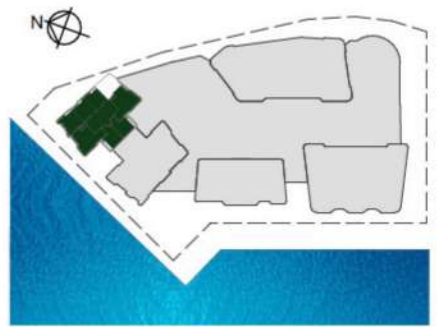
**TYPE RVI-
LEVEL 06-09**

2 BEDROOM + BALCONY

LEVEL 06-09

UNIT 606-906

946 sqft



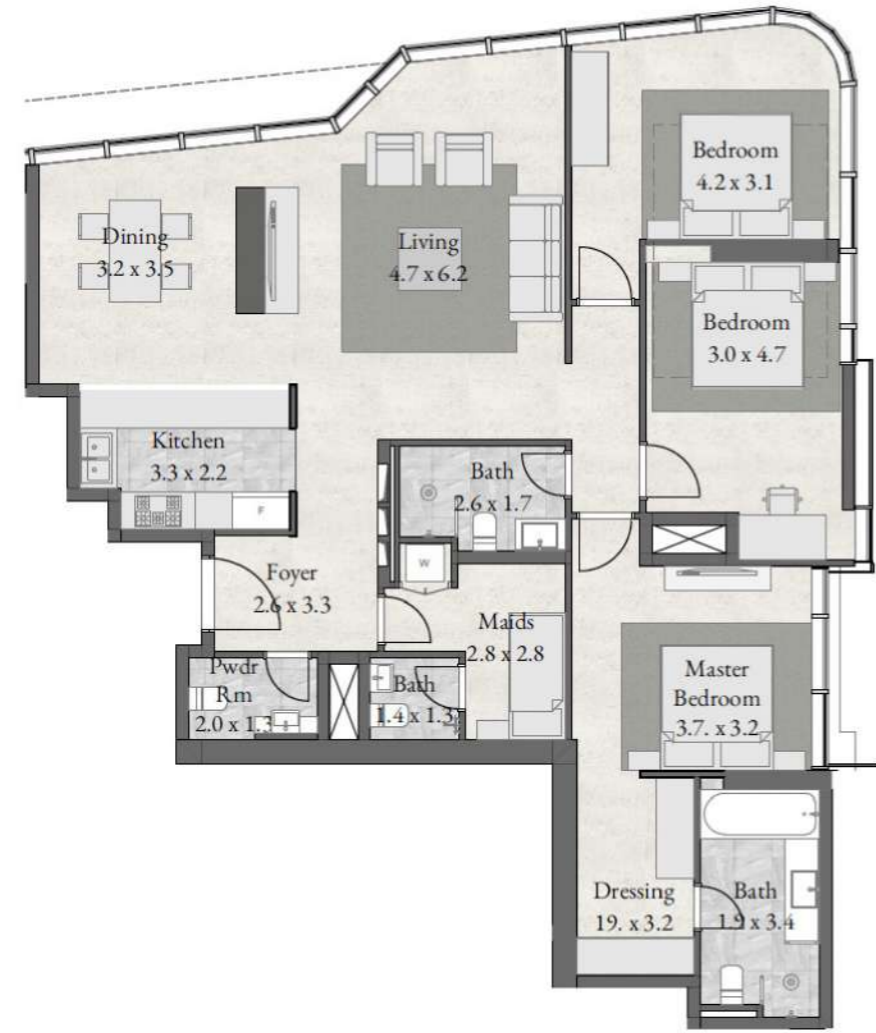
**TYPE RVI-
LEVEL 01-05 & 10-14 & 17-28**

3 BEDROOM + MAID

LEVEL 01-05 & 10-14 & 17-28

UNIT 107-1407 & 1704
& 1805-2705 & 2804

1,594 sqft



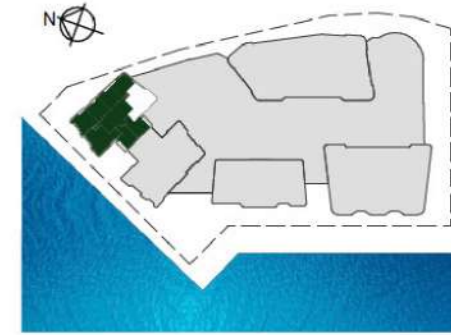
**TYPE RVI-
LEVEL 06-09**

3 BEDROOM + MA + BAL

LEVEL 06-09

UNIT 607 - 907

1,587 sqft



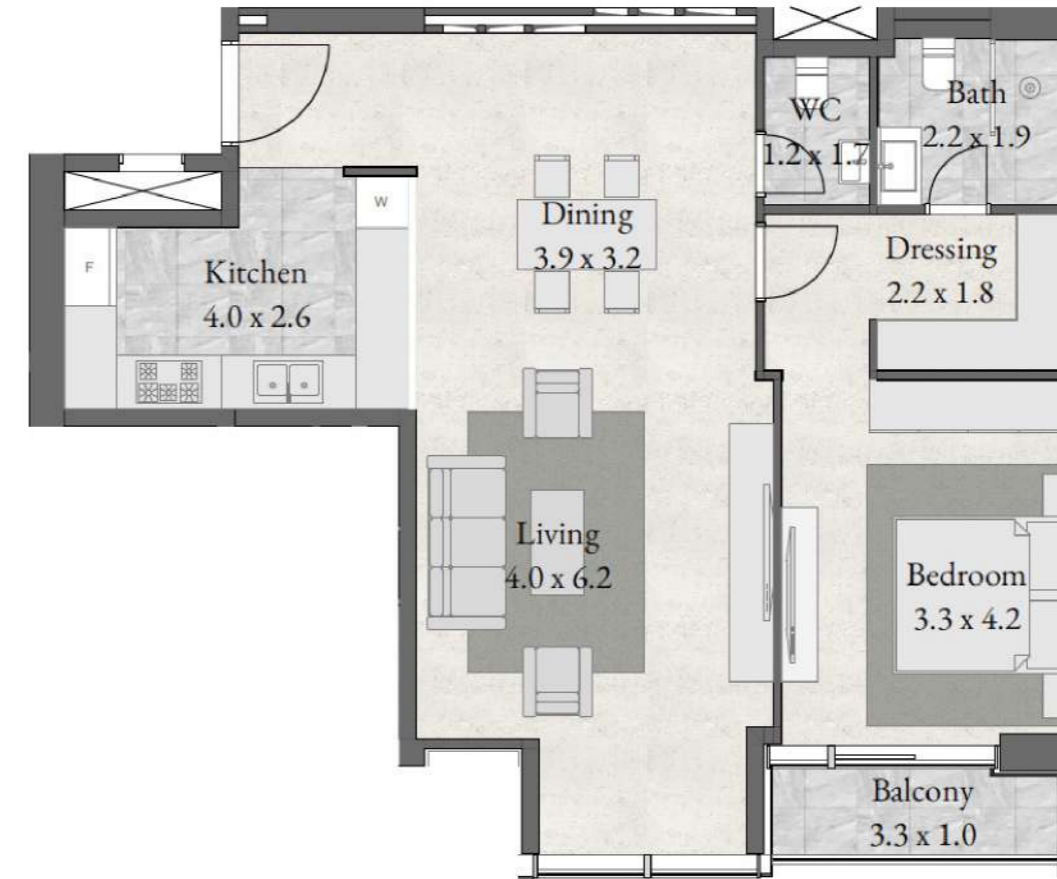
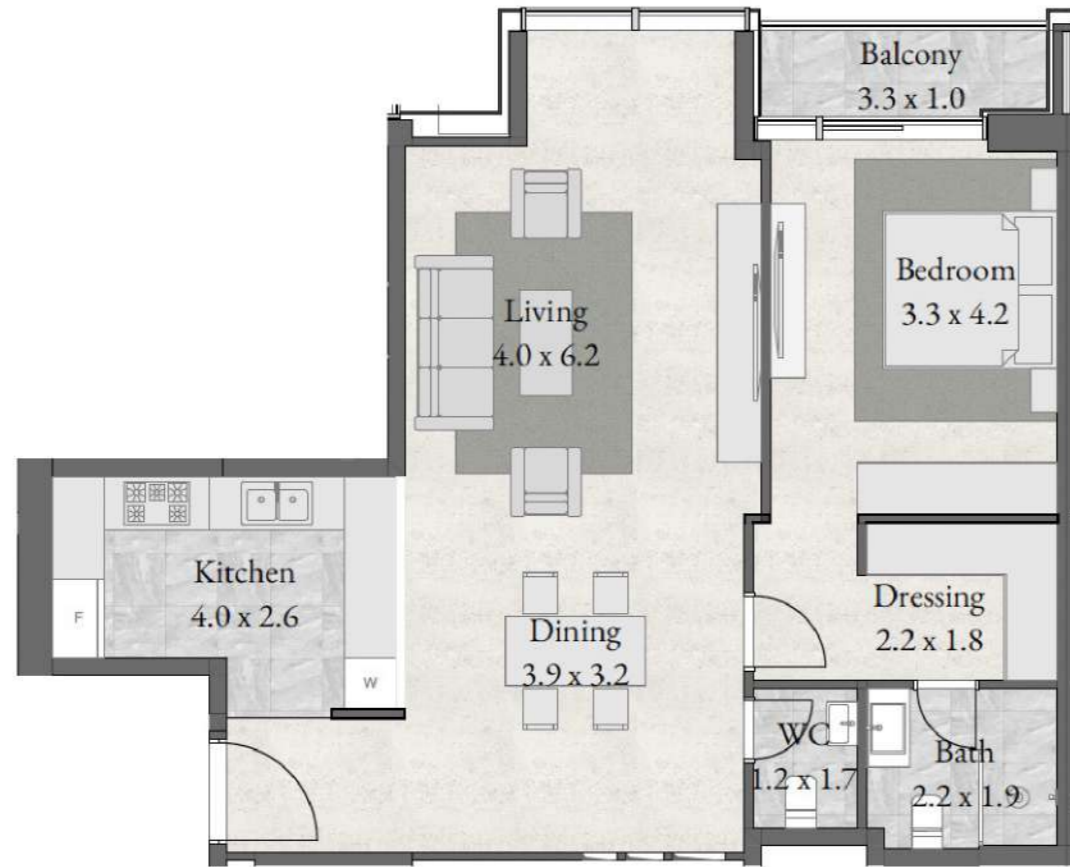
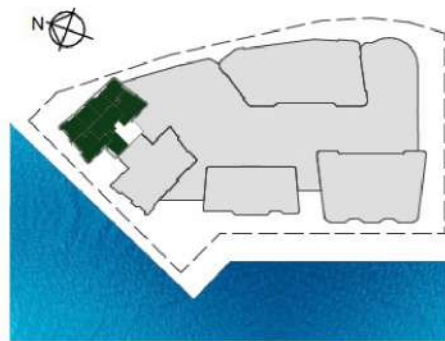
**TYPE RVI-
LEVEL 01-05 & 10-14**

1 BEDROOM + BALCONY

LEVEL 01-05 & 10-14

UNIT 108-508
& 1008-1408

964 sqft



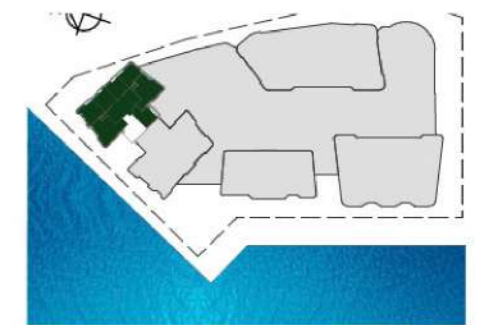
**TYPE RVI-
LEVEL 01-05 & 10-14**

1 BEDROOM + BALCONY

LEVEL 01-05 & 10-14

UNIT 101-501 & 1001-1401

964 sqft



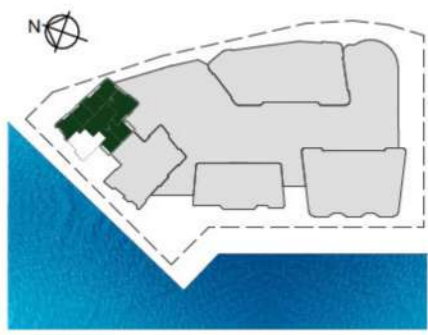
**TYPE RVI-
LEVEL 01-05 & 10-14 & 17-28**

3 BEDROOM + MAID

LEVEL 01-05 & 10-14 & 17-28

UNIT 102-502 & 1002-1402
& 1701 & 1802-2702 & 2801

1,630 sqft



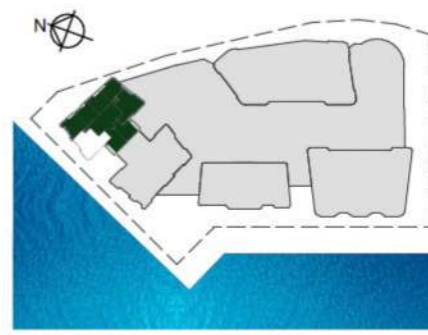
**TYPE RVI-
LEVEL 06-09**

3 BEDROOM + MA + BAL

LEVEL 06-09

UNIT 602-902

1,623 sqft



TYPE RVI- LEVEL 06 & 08

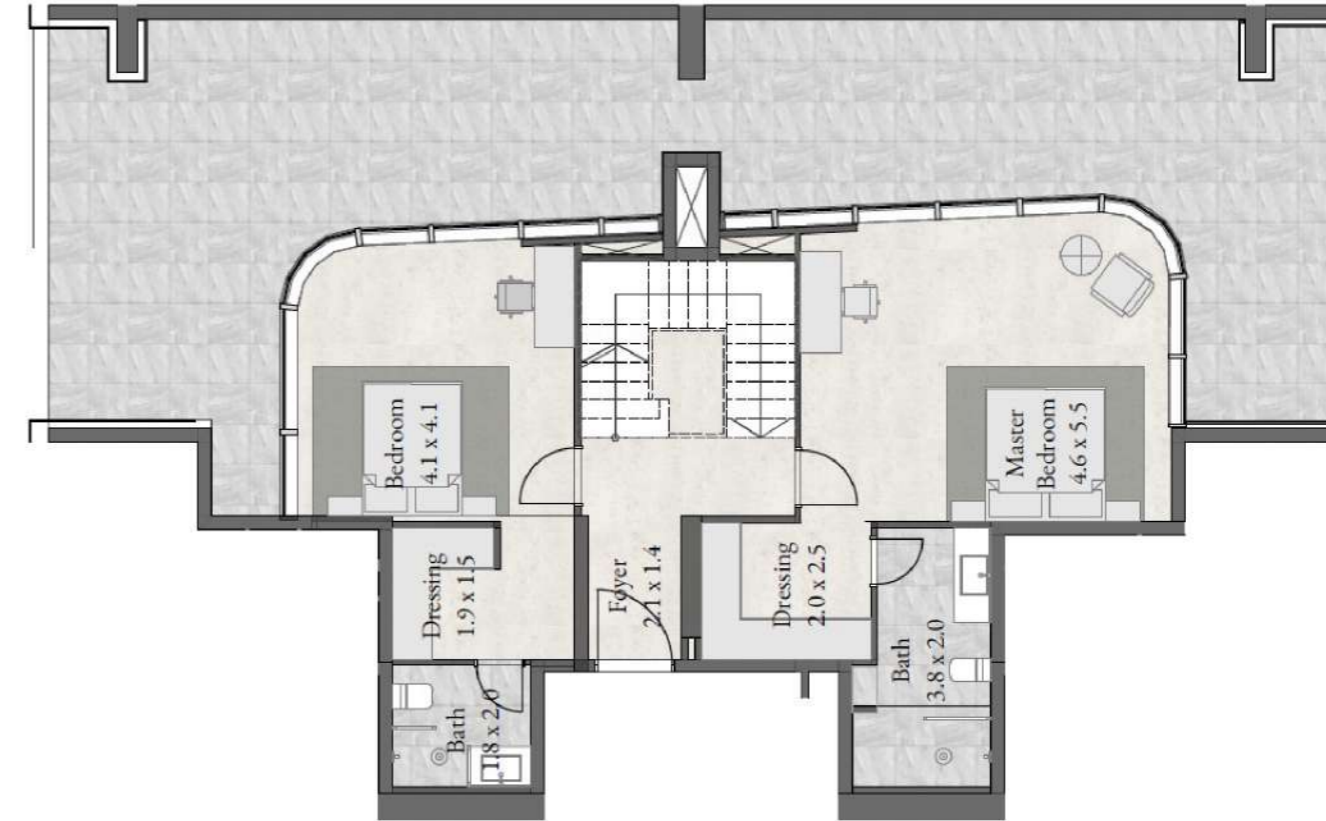
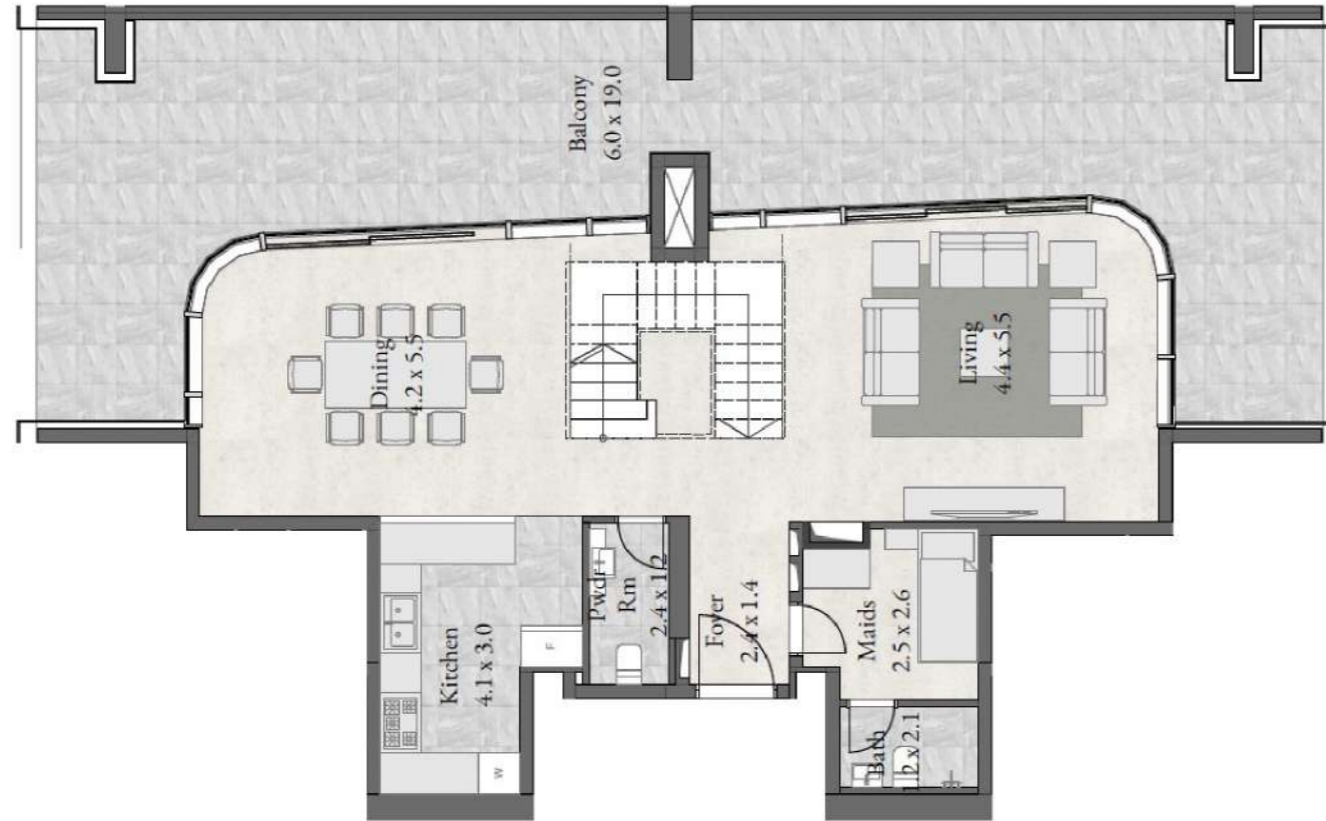
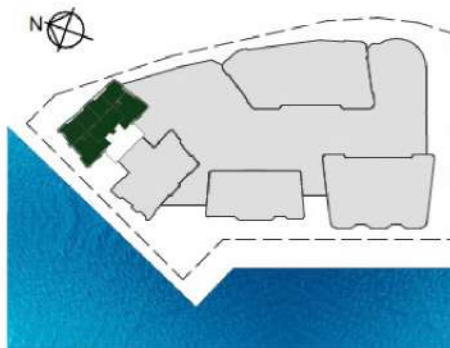
LOWER GROUND

2 BEDROOM + MA + BAL

LEVEL 06 & 08

UNIT 601 & 801

2,744 sqft



TYPE RVI- LEVEL 07 & 07

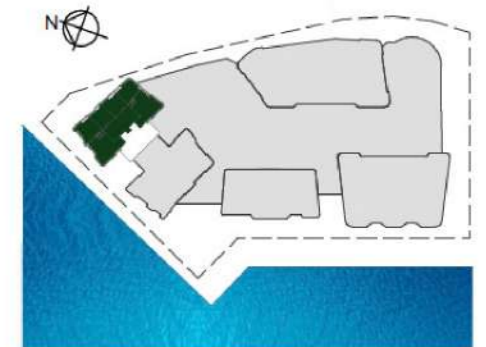
UPPER GROUND

2 BEDROOM + MA + BAL

LEVEL 07 & 07

UNIT 701 & 901

2,744 sqft



**TYPE RVI-
LEVEL 15**

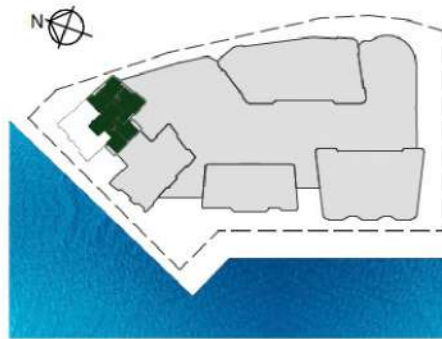
LOWER GROUND

5 BEDROOM + MA + 2 BAL + GAR

LEVEL 15

UNIT 1502

5,129 sqft



**TYPE RVI-
LEVEL 16**

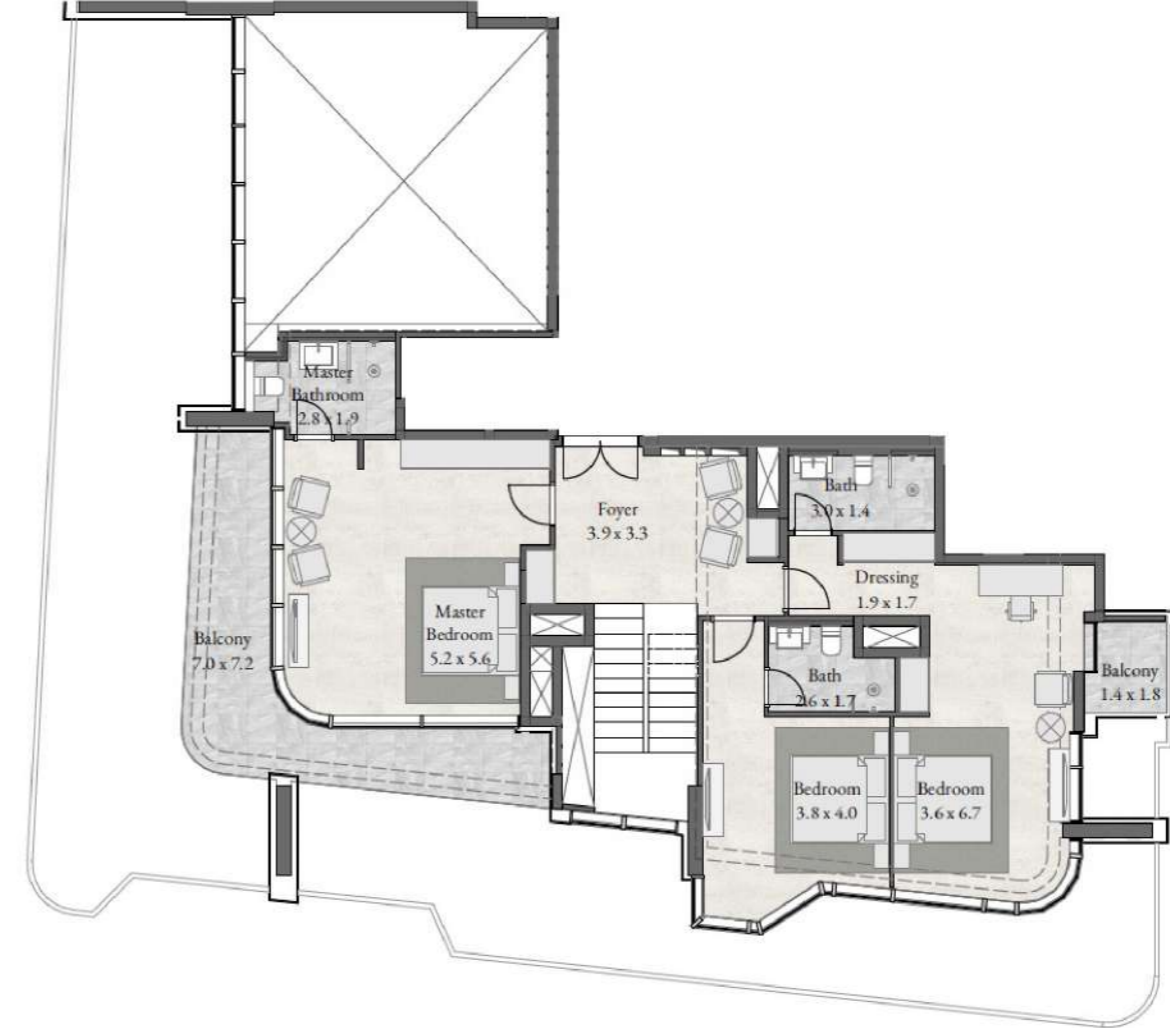
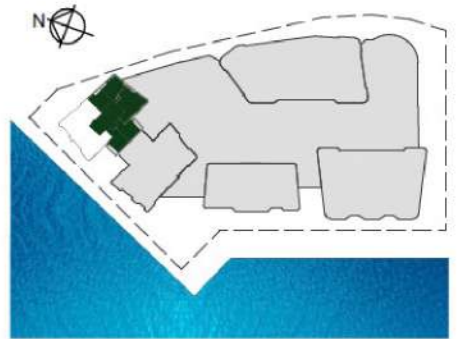
UPPER GROUND

5 BEDROOM + MA + 2 BAL + GAR

LEVEL 16

UNIT 1502

5,129 sqft



**TYPE RVI-
LEVEL 15**

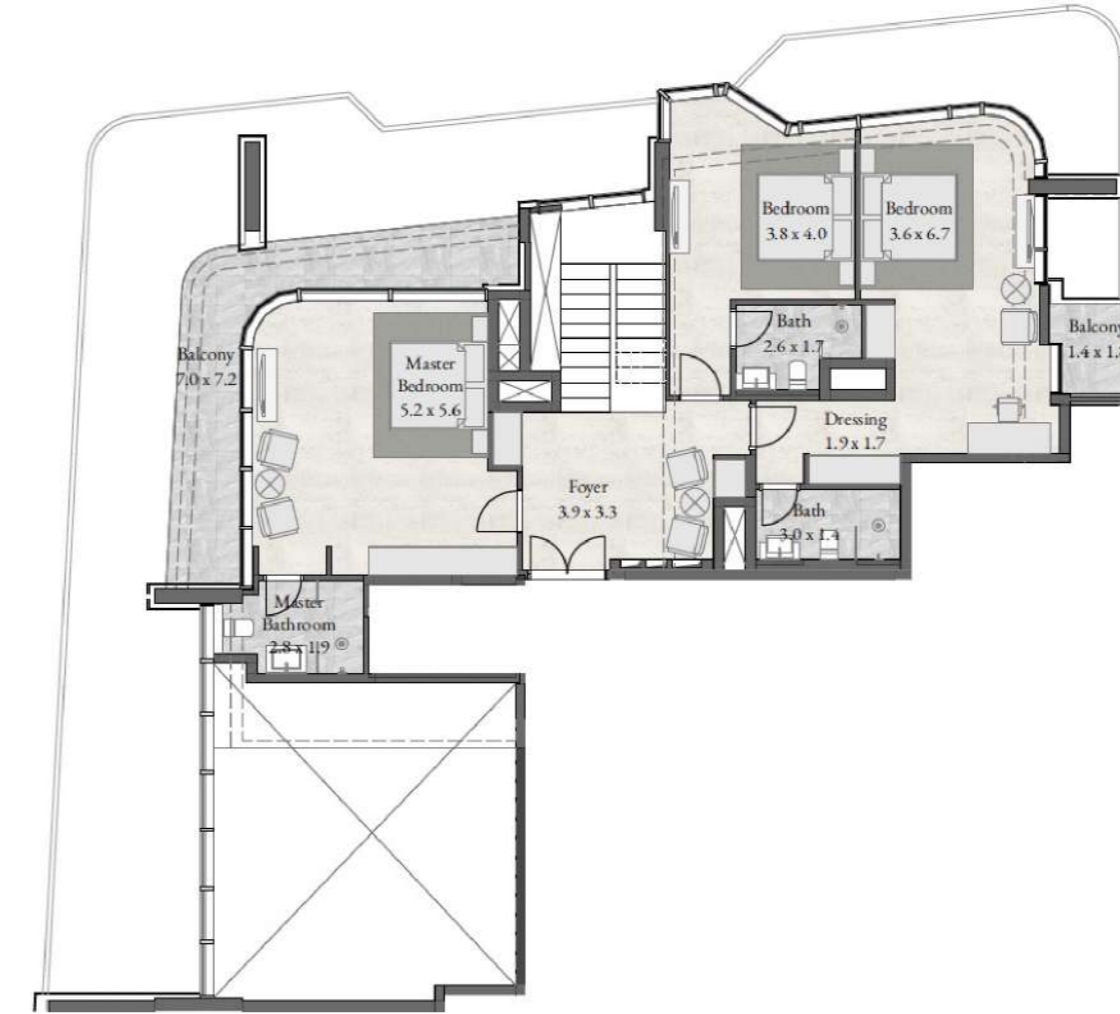
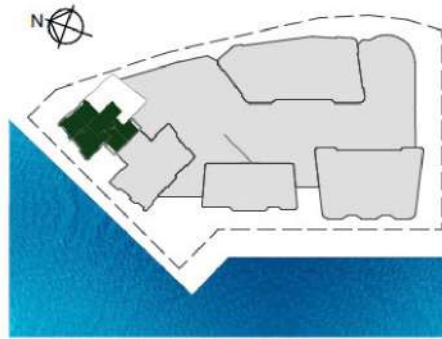
LOWER GROUND

5 BEDROOM + MA + 2 BAL + GAR

LEVEL 15

UNIT 1503

4,852 sqft



**TYPE RVI-
LEVEL 16**

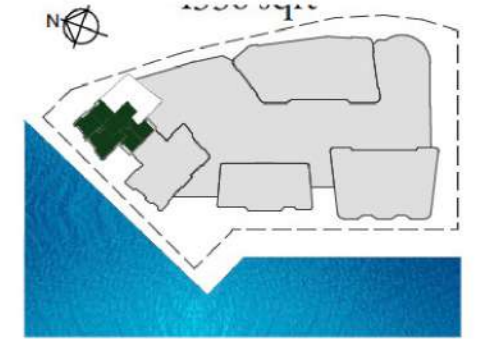
UPPER GROUND

5 BEDROOM + MA + 2 BAL + GAR

LEVEL 16

UNIT 1503

4,852 sqft



**TYPE RVI-
LEVEL 15**

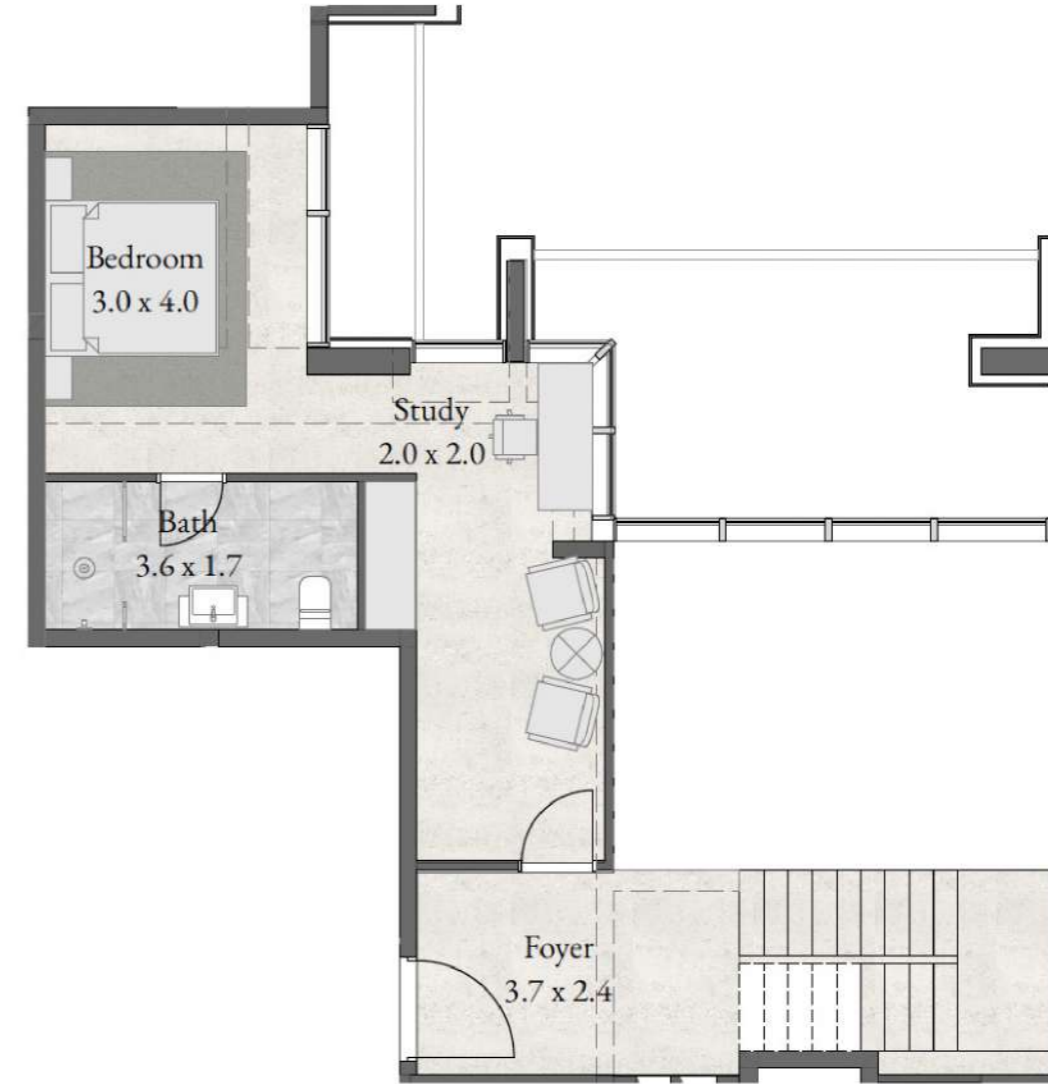
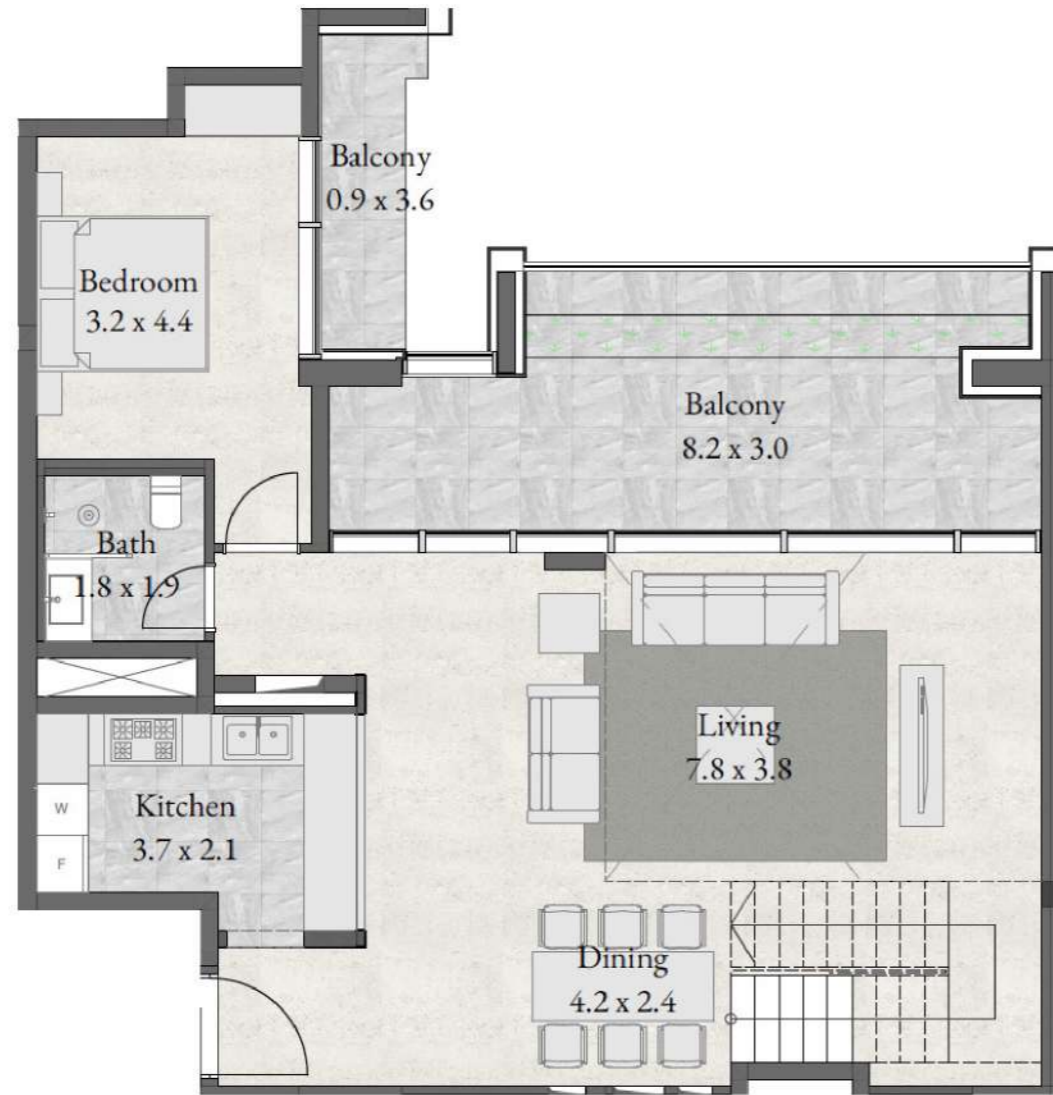
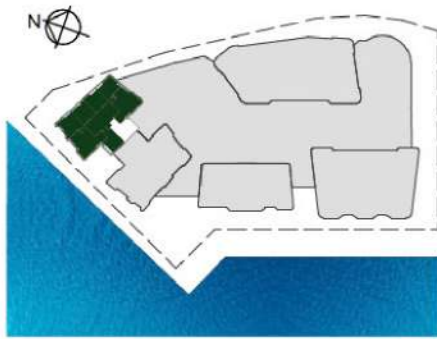
LOWER GROUND

2 BEDROOM + BALCONY

LEVEL 15

UNIT 1504

1,801 sqft



**TYPE RVI-
LEVEL 16**

UPPER GROUND

2 BEDROOM + BALCONY

LEVEL 16

UNIT 1504

1,801 sqft



**TYPE RVI-
LEVEL 15**

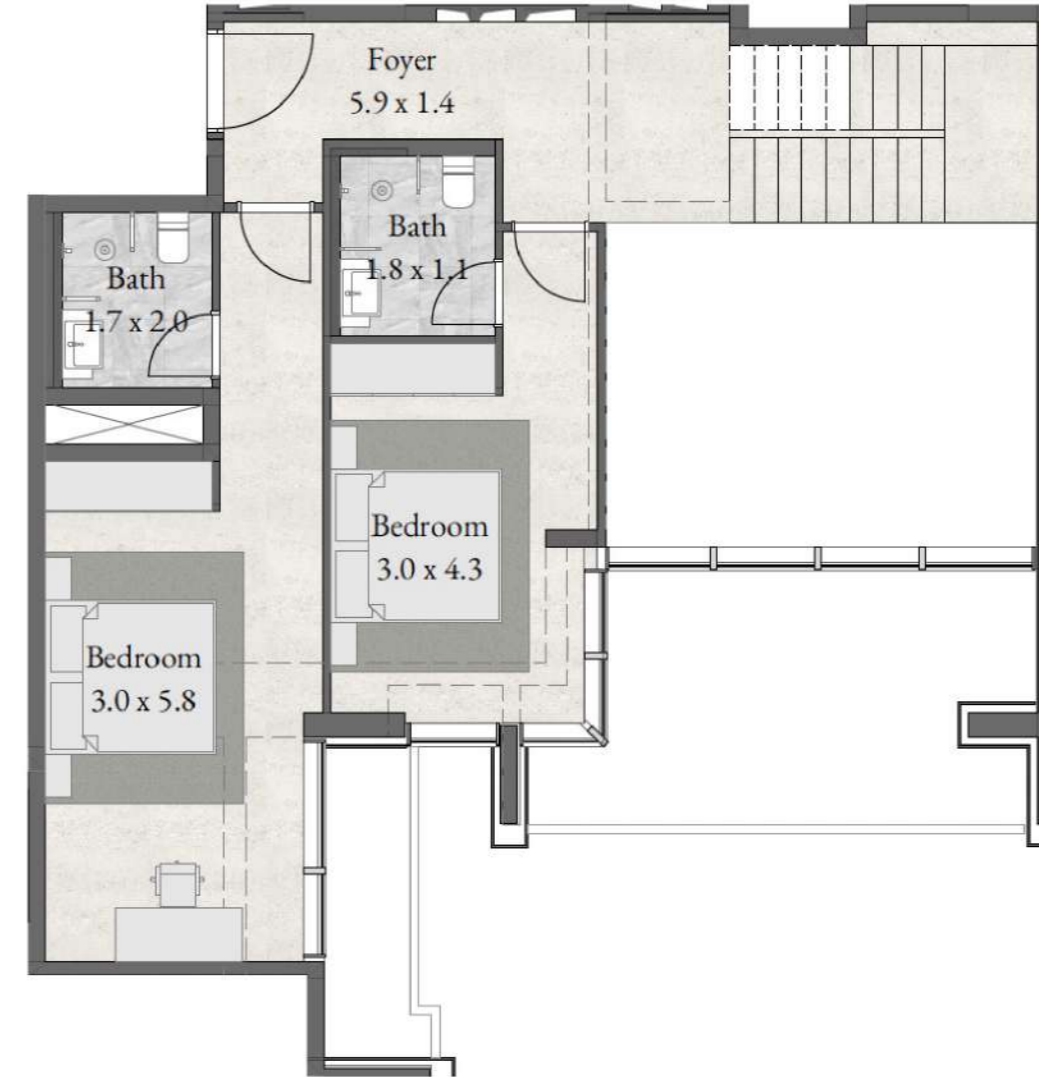
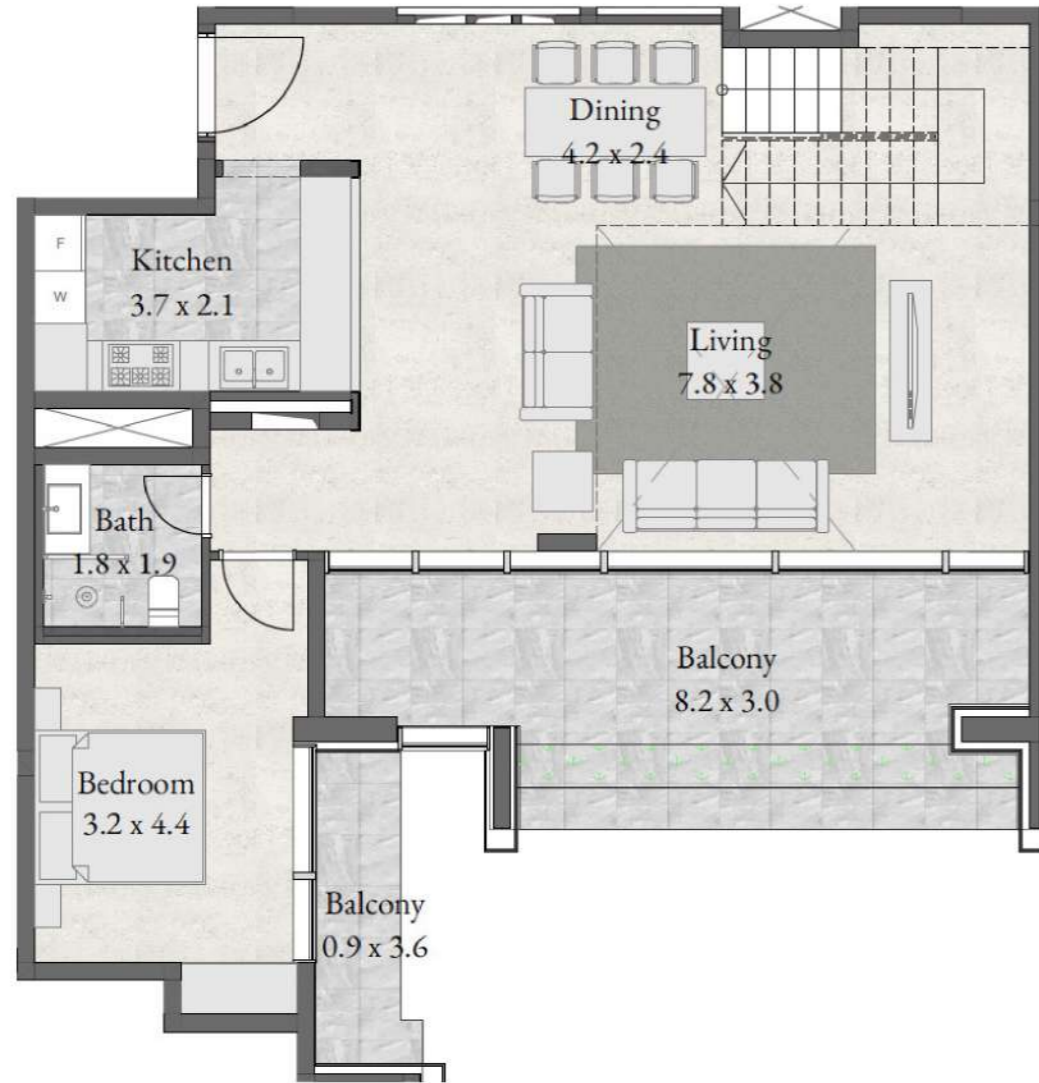
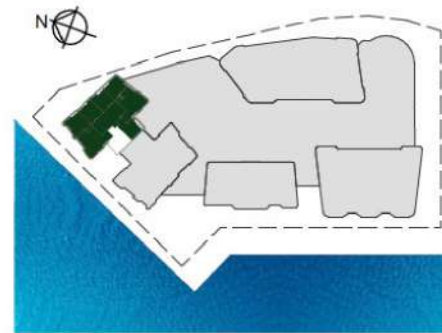
LOWER GROUND

3 BEDROOM + 2 BALCONY

LEVEL 15

UNIT 1501

1,994 sqft



**TYPE RVI-
LEVEL 16**

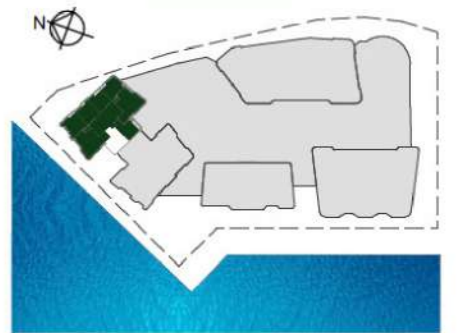
UPPER GROUND

3 BEDROOM + 2 BALCONY

LEVEL 16

UNIT 1501

1,994 sqft



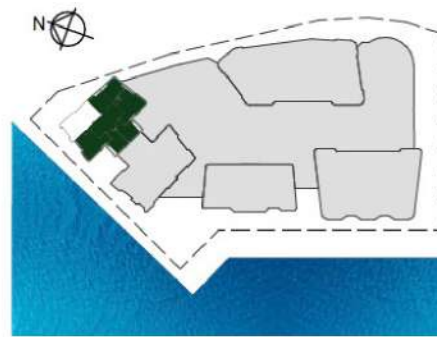
**TYPE RVI-
LEVEL 17 - 28**

3 BEDROOM + MA + 2 BAL

LEVEL 17-28

UNIT 1702 & 1803-2703 & 2802

1,929 sqft



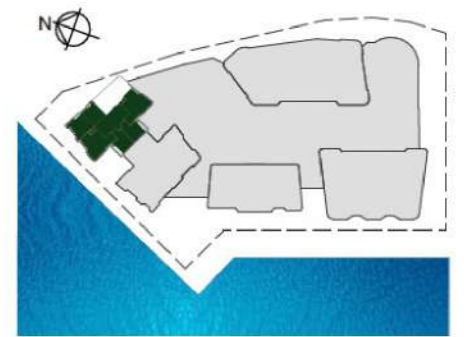
**TYPE RVI-
LEVEL 17-28**

3 BEDROOM + MA + 2 BAL

LEVEL 17-28

UNIT 1703 & 1804-2704 & 2803

1,808 sqft



TYPE RVI-
LEVEL 18, 20, 24 & 26

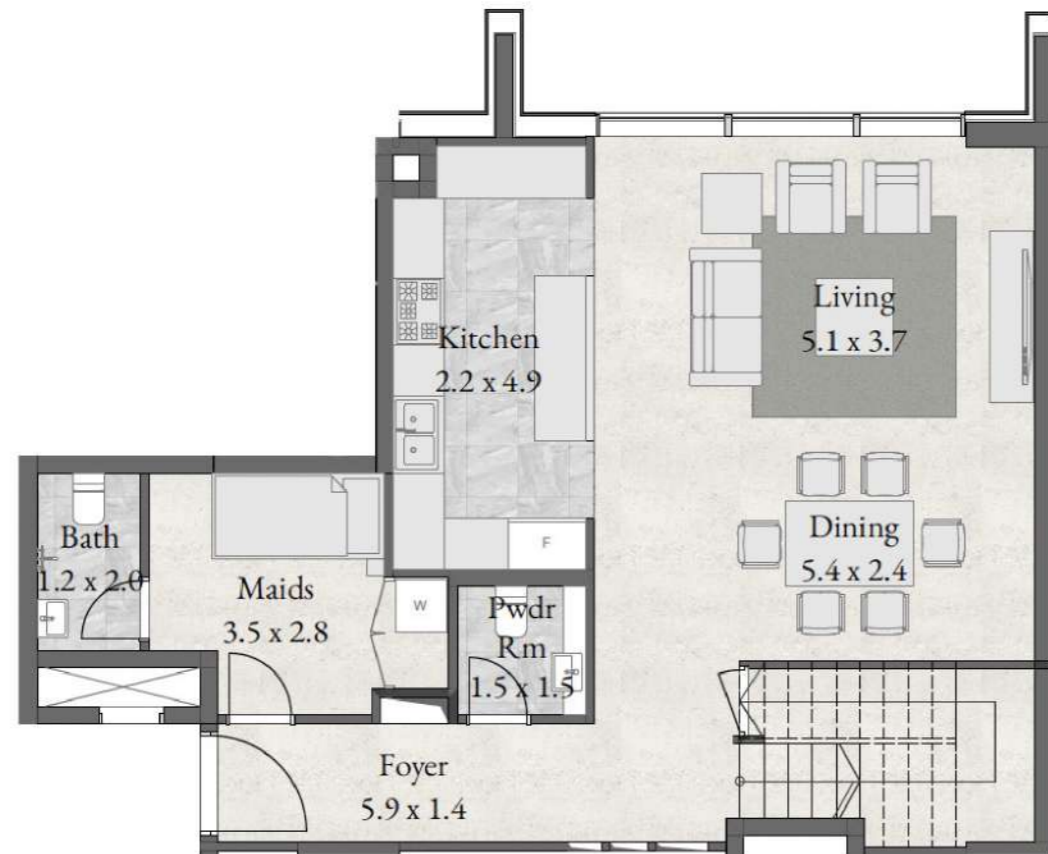
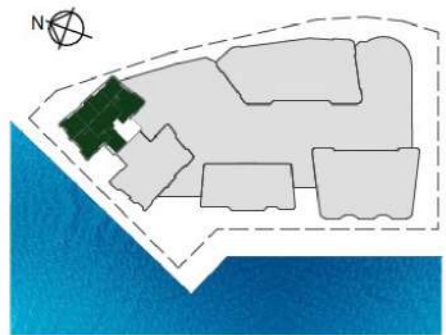
LOWER GROUND

2 BEDROOM + MAID

LEVEL 18, 20, 24 & 26

UNIT 1806, 2006, 2406 & 2606

1,798 sqft



TYPE RVI-
LEVEL 19, 21, 25 & 27

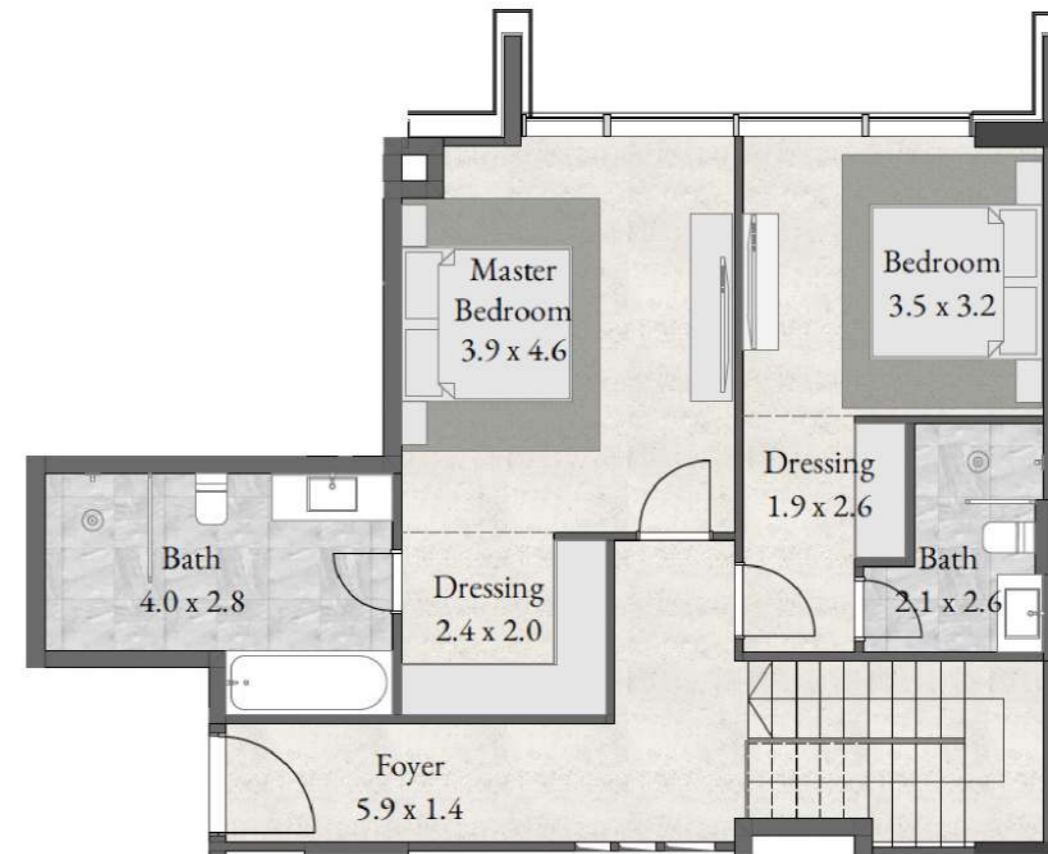
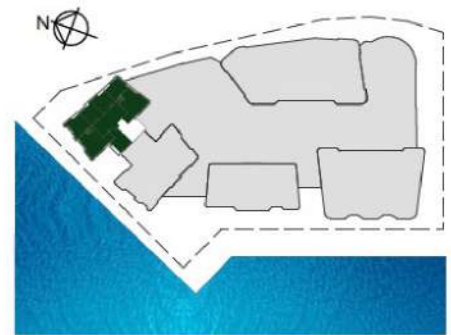
UPPER GROUND

2 BEDROOM + MAID

LEVEL 19, 21, 25 & 27

UNIT 1906, 2106, 2506 & 2706

1,798 sqft



**TYPE RVI-
LEVEL 18, 20, 24 & 26**

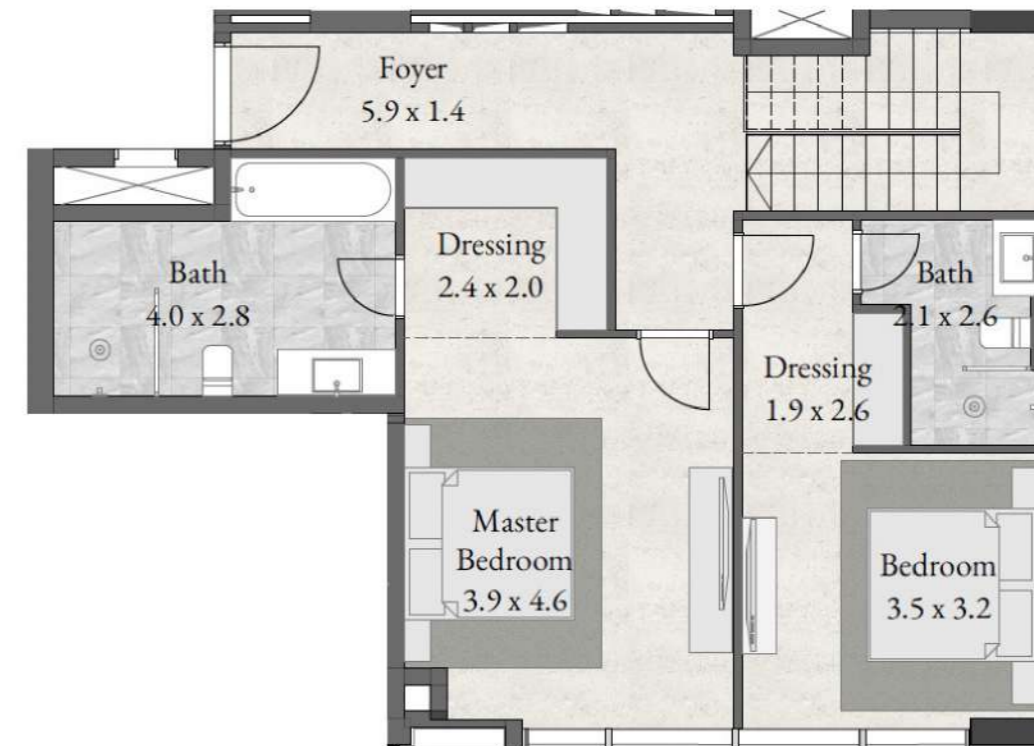
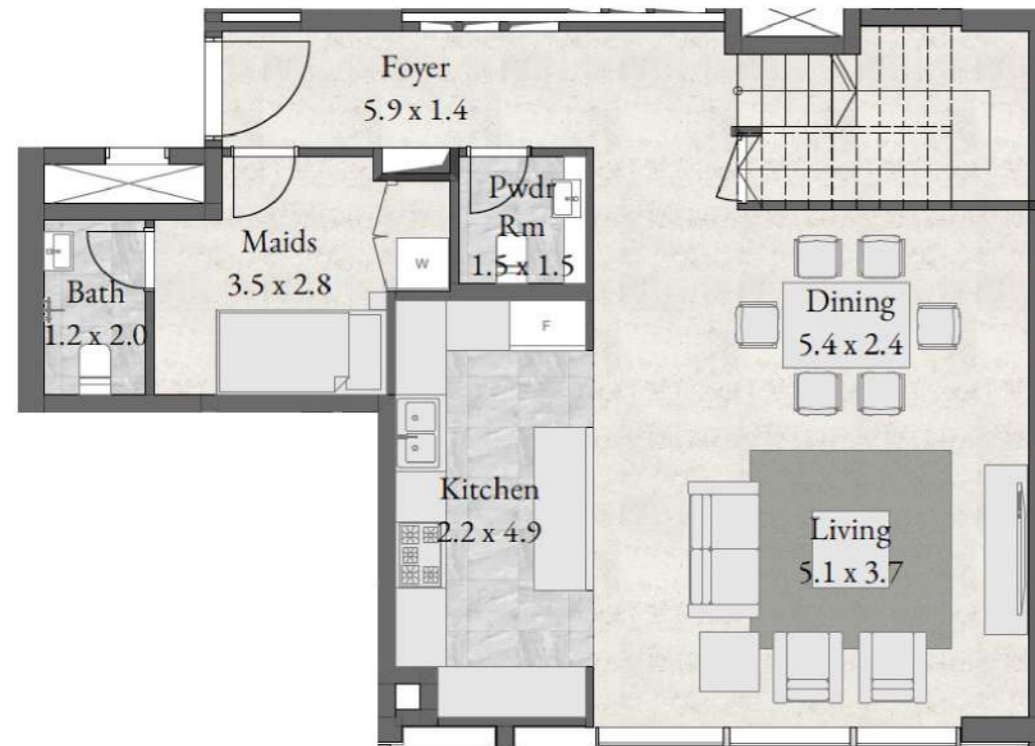
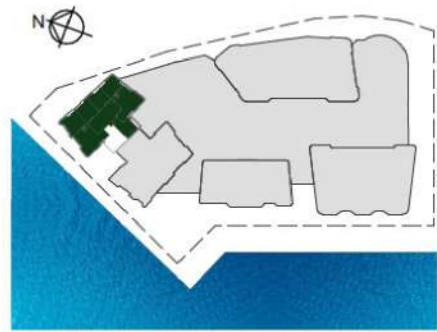
LOWER GROUND

2 BEDROOM + MAID

LEVEL 18, 20, 24 & 26

UNIT 1801, 2001, 2401 & 2601

1,778 sqft



**TYPE RVI-
LEVEL 19, 21, 25 & 27**

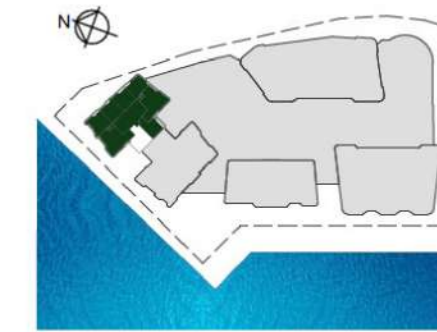
UPPER GROUND

2 BEDROOM + MAID

LEVEL 19, 21, 25 & 27

UNIT 1901, 2101, 2501 & 2701

1,778 sqft



**TYPE RVI-
LEVEL 22**

LOWER GROUND

2 BEDROOM + MAID

LEVEL 22

UNIT 2201

2,902 sqft



**TYPE RVI-
LEVEL 23**

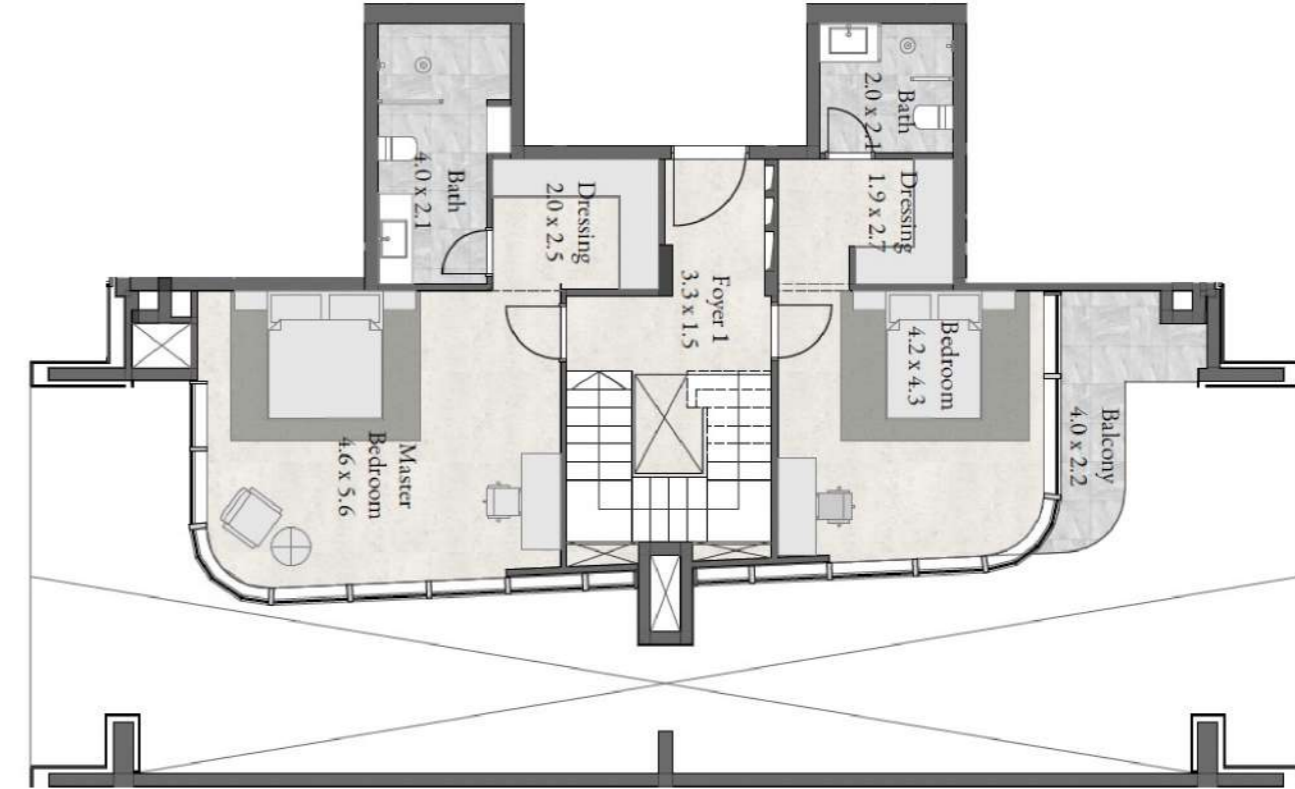
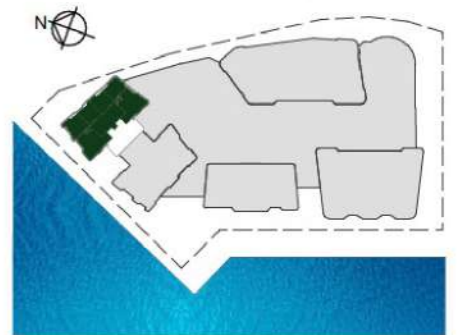
UPPER GROUND

2 BEDROOM + MAID

LEVEL 23

UNIT 2301

2,902 sqft



RSI.

Call **600 548 200**

www.propertyshopinvestment.com

