



SOLERA
D O W N T O W N M I N A



A N E W D O W N T O W N

Rhythm

W H E R E P R E S E N C E
Speaks Louder



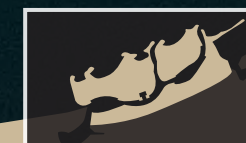


A P A U S E

Between The Pulse

Solera rises on Mina, Ras Al Khaimah's coastal sanctuary. Perfectly connected to Abu Dhabi, Dubai, and beyond, it offers a balance of island living and city energy. A place where space, time, and elegance meet.

M I N A



RAS AL KHAIMAH



RAS AL KHAIMAH
INTERNATIONAL
AIRPORT
15 MINS

DUBAI

ABU DHABI

SOLERA

D O W N T O W N M I N A

A T T H E H E A R T *of Mina's New Downtown*

Solera claims its place in Downtown Mina's core, where broad boulevards, curated spaces, and effortless sophistication converge. Here, city living isn't a compromise; it's a statement.





A N E W

Downtown Rhythm

Downtown Mina is emerging as a thoughtfully designed cityscape, rooted in intention. From the vibrant pulse of Mina Boulevard to open public spaces and curated amenities, it's a neighbourhood shaped for connection, movement, and everyday rhythm.



MINA BOULEVARD



T H E H E A R T B E A T
Of Downtown

Lined with cafés, shops and energy, Mina Boulevard is Raha Island's centrepiece, a vibrant spine that runs through Downtown and sits just steps from Solera's doors.

MINA HARBOUR



A P A U S E T H A T
Becomes A Place

With boats docked just steps away, Mina Harbour blends waterside calm with curated retail, dining, and the rhythm of daily life.



MINA YACHT CLUB
COASTAL RHYTHM

A global sailing stop with superyacht facilities and quiet elegance. Set along key routes, minutes from Solera's calm, grounded pace.

COMMUNITY AMENITIES
LIFE, OUTSIDE

Outdoor gyms, green spaces, play areas and a pet park create moments beyond the home. Children explore, families spend time, and balance finds its rhythm.

CULTURAL & EVENT SPACES
CULTURAL FLOW

Spaces for events, talks, and shared experiences help the neighbourhood pulse with culture - open, inclusive, and easy to access.

PEDESTRIAN PATHWAYS
SPACE TO WALK

Walkable streets with wide paths and shade trees make daily movement easy, calm, and intentional - for work, errands, or leisure.

PUBLIC SPACES & PLAZAS



R O O M T O B R E A T H E
Places To Be

Open plazas and pockets of calm invite you to step outside, meet neighbours, or simply take in the day.

PROXIMITY



I N T H E M I D D L E
Of It All

Solera sits at the centre of Downtown Mina - surrounded by cafés, creative spaces, and movement. It's where energy lives just outside your door.



T H E C I T Y

Within Reach

Tree-lined paths, cycle routes and shaded walkways link every part of Downtown Mina, calm, connected, and always close to home.



M I N A ' S

New Statement Address

Positioned within Raha Island's evolving urban centre, Solera introduces a lifestyle where city energy hums quietly. Minutes from the shoreline but firmly rooted in downtown, it's a destination for those who value the pulse of urban life - balanced by the ease of coastal access.





In Flow

Every line of Solera echoes the elegance of an era when design was thoughtful and understated. Light and shadow dance across its surface, not for spectacle, but for quiet refinement.






R H Y T H M

Of The City

In Downtown Mina the city hums with a refined, measured, and timeless pulse. Solera connects you to this energy. Here, life unfolds with intent, from bustling boulevards to serene interior spaces, all just moments from the coast.



CITY LIVING

Seamlessly Connected

Solera offers a different kind of city living - one where balance is found in thoughtful design, curated amenities, and proximity to both urban life and natural calm. It's not a place to retreat from the city, but to embrace it on your own terms.



N O T L O U D

Just Unforgettable

Solera doesn't call for attention, it holds it. Framed not by spectacle, but by stillness. It's in the textures, the tones, the way space feels styled and lived. This is not a place that shouts. It's a place that stays.



R E S I D E N C E S

Studios

Compact yet composed, perfect for those who value efficiency with style.

One-Bedroom Suites

Open, light-filled, with a nod to classic proportion and detail.

Two-Bedroom Suites

Spacious, balanced, crafted for quiet comfort.

Three-Bedroom Premium

Expansive, refined, and rooted in a sense of quiet grandeur.

Penthouses

Elevated living spaces that command attention with understated elegance and city panoramas.





F R A M E D B Y

City Lights

Solera's architecture stands firm, yet fluid. Undulating balconies echo the city's energy - structured yet soft, creating patterns of light and shadow that shift with the day.



Studio
(from 351 sqft to 430 sqft)



One-Bedroom Suite
(from 611 sqft to 880 sqft)



One-Bedroom Premium
(from 779 sqft to 1,128 sqft)



Two-Bedroom Apartment
(from 1,167 sqft to 1,685 sqft)



Three-Bedroom Apartment
(from 1,678 sqft to 2,125 sqft)



Penthouse Four-Bedroom
(from 3,253 sqft to 3,264 sqft)





SOLERA DOWNTOWN MINA

Lobby ✨



SOLERA DOWNTOWN MINA

One-Bedroom Suites ✨





SOLERA DOWNTOWN MINA

One-Bedroom ✨



SOLERA DOWNTOWN MINA

Two-Bedroom ✨

A romantic scene featuring a man and a woman in formal attire. The woman, on the left, is wearing a dark, shimmering dress and a sparkling necklace. The man, on the right, is in a tuxedo with a bow tie. They are both smiling and looking towards each other. The background is dark with warm, out-of-focus lights, creating a bokeh effect. The overall mood is intimate and elegant.

S O L E R A

*Of Presence
Of Motion
Of Release*



S O L E R A E S S E N T I A L S

From grand entrances to private lounges, every space flows with quiet confidence.

40 M. Infinity Edge Lap Pool

Kids Pool With Splash Pad

Solera Flame Pavilion
(BBQ – Dining – Bar Counter – Gathering)

Telescope Corner

Sculptural Garden

Outdoor Gym & Yoga Pavilion

Co-Working Space

Jacuzzi

Hammock Garden

Skateboard Park



SOLERA
DOWBTOWB MINA

A M E N I T I E S
& Community

From grand entrances to private lounges, every
space flows with quiet confidence.



E L E V A T E

Your Senses

On the rooftop, a serene deck for yoga and contemplation
offers a moment of reflection above the city pulse.



WHERE FLOW
Meets Stillness

The infinity pool becomes a symbol of Solera's philosophy - fluid, continuous, never abrupt. Designed to invite pause, not to impress, it becomes a space where city energy meets elegant calm.





SOLERA DOWNTOWN MINA



Movement here is about balance, not busyness. Solera's fitness spaces are designed to support wellbeing, with a understated confidence that invites participation without demand.



THE NOOK

More than a space - it's a vibe. A place where the day unfolds with purpose.
Work. Meet. Unwind. The Nook is where ideas spark and connections happen,
where business blends with leisure.





SOLERA DOWNTOWN MINA



L I F E
In The Open

Downtown Mina offers tree-lined boulevards, pedestrian streets, and a pet park - essentials for a connected, walkable lifestyle.



W O R L D - C L A S S

Neighbours

From the understated luxury of the Four Seasons to the vibrant energy of Nikki Beach, the neighbourhood offers a curated collection of experiences - close enough to enjoy, distant enough to maintain Solera's quiet rhythm.



SOLERA
DOWNTOWN MINA

01 A N A N T A R A
RESORT AND SPA

A peaceful retreat offering 174 rooms, including Maldivian-style water villas with views of mangroves and the sea. Perfect for a quiet getaway surrounded by nature's calm.

02 I N T E R
C O N T I N E N T A L
RESORT AND SPA

An award-winning destination where island charm meets luxury. Enjoy direct access to pristine beaches and a setting designed for those seeking simplicity and elegance.

03 N I K K I
B E A C H
RESORT AND BEACH CLUB

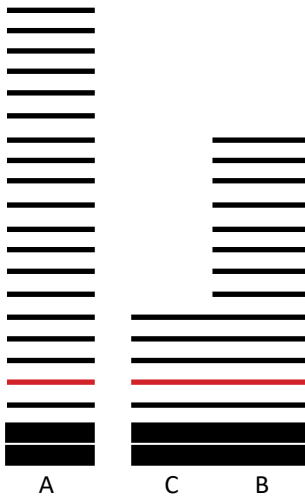
A vibrant escape just a short drive from the city. Enjoy chic beachfront accommodation, live music from world-renowned DJs, and fresh coastal cuisine that make weekends unforgettable.

04 F O U R
S E A S O N S
RESORT AND RESIDENCES

A world-class resort where understated luxury defines every detail. Enjoy gourmet dining, a tranquil spa, a private marina, and direct access to pristine waters - ideal for a refined weekend away.

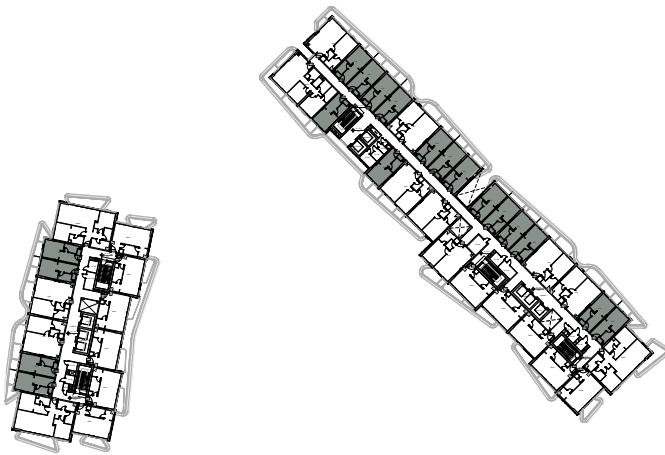


Unit Plans

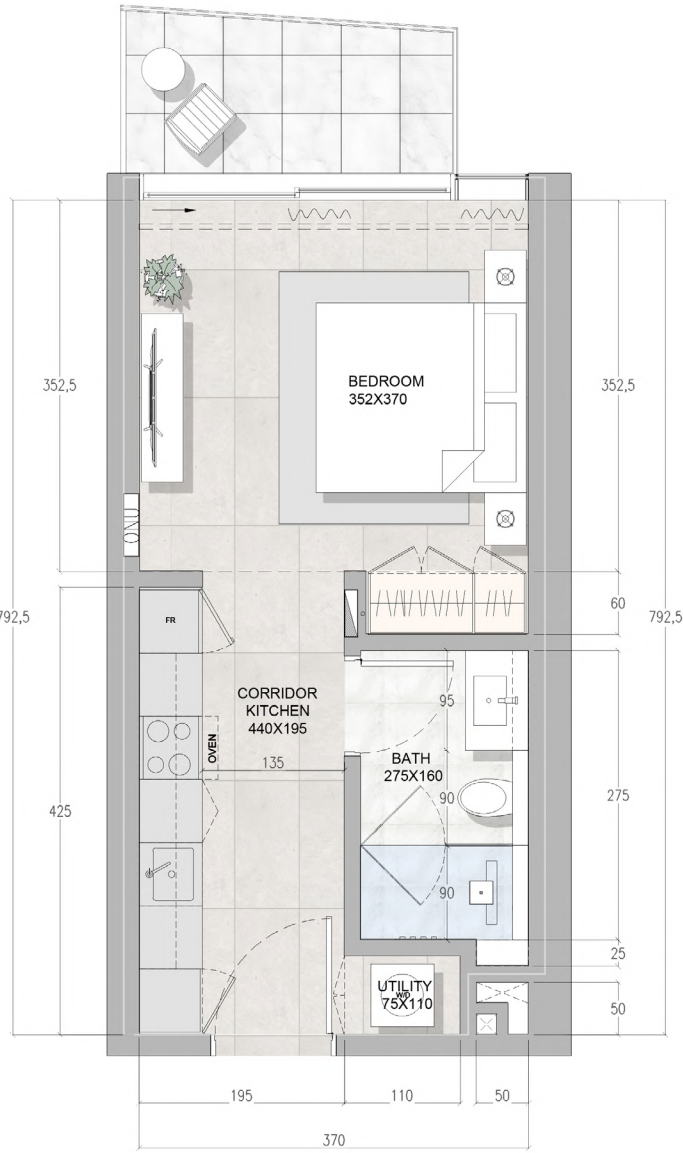


UNIT SIZE (FROM - TO)	SQM	SQFT
Internal Area	32.65	351.44
Balcony Area	4.12-5.04	45.32-54.25
Total Area	36.77-37.69	395.79-405.69

LOCATION	LEVELS	SERIES
SOLERA 1	Pl,1st,2nd,3rd,4th,5th,11th,12th,13th	A-P01,A-P02,A-P03,A-P04,A-P05,A-P06,A-P07,A-P08,A-P10,A-I02,A-I03,A-I04,A-I05,A-I06,A-I07,A-I08,A-I09,A-205,A-206,A-209,A-210,A-305,A-306,A-309,A-310,A-405,A-406,A-409,A-410,A-505,A-506,A-509,A-510,A-I104, A-I109,A-I204, A-I209, A-I304, A-I309
SOLERA 2	Pl,1st,2nd,3rd,4th,5th,6th,7th,8th,9th,10th,11th	B-P04,B-P05,B-P06,B-P07,B-I08, B-I09, B-I10,B-205, B-206, B-209,B-210,B-211, B-212,B-305, B-306, B-309,B-310,B-311,B-312,B-404,B-406, B-407, B-410, B-411, B-412, B-413,B-506, B-507, B-510, B-511, B-512, B-513,B-605, B-606, B-609 B-610, B-705, B-708, B-710, B-805, B-808, B-810, B-905, B-906,B-909, B-910, B-1005, B-1006,B-1009, B-1010,B-1105, B-1106,B-1109, B-1110
SOLERA 3	Pl,1st,2nd,3rd,4th,5th	C-P01,C-P02,C-P03,C-P04,C-P05, C-I03,C-I04,C-I05,C-I06,C-I07,C-201, C-204, C-205, C-206, C-208, C-209, C-210, C-211, C-214, C-308, C-408, C-508

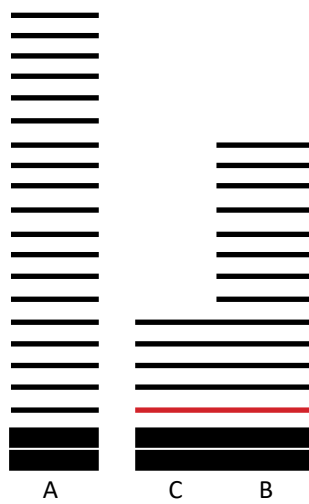


Floor plan numbers, square footage, and floor plans are approximate. Final dimensions, square footage and floor plans may vary or may be mirrored. Balcony area varies depending on location of unit on the floor.



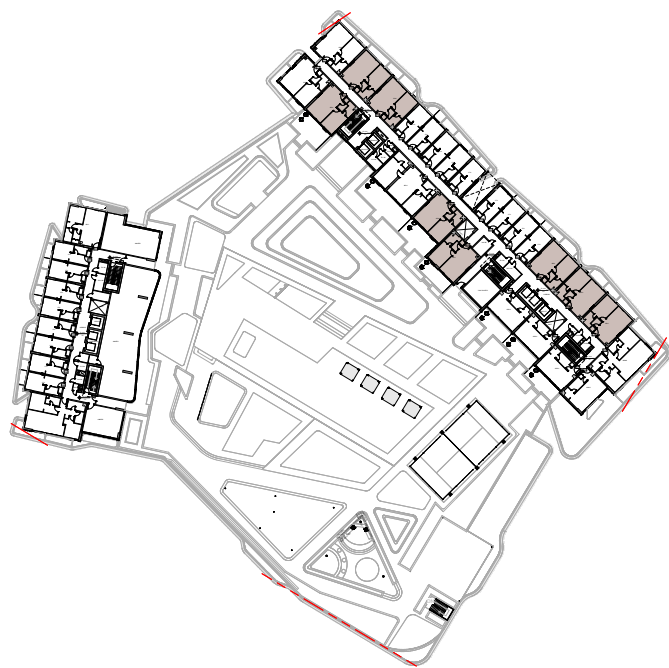
Floor plan numbers, square footage, and floor plans are approximate. Final dimensions, square footage and floor plans may vary or may be mirrored. Balcony area varies depending on location of unit on the floor.

1 Bedroom Premium (1BR-A)

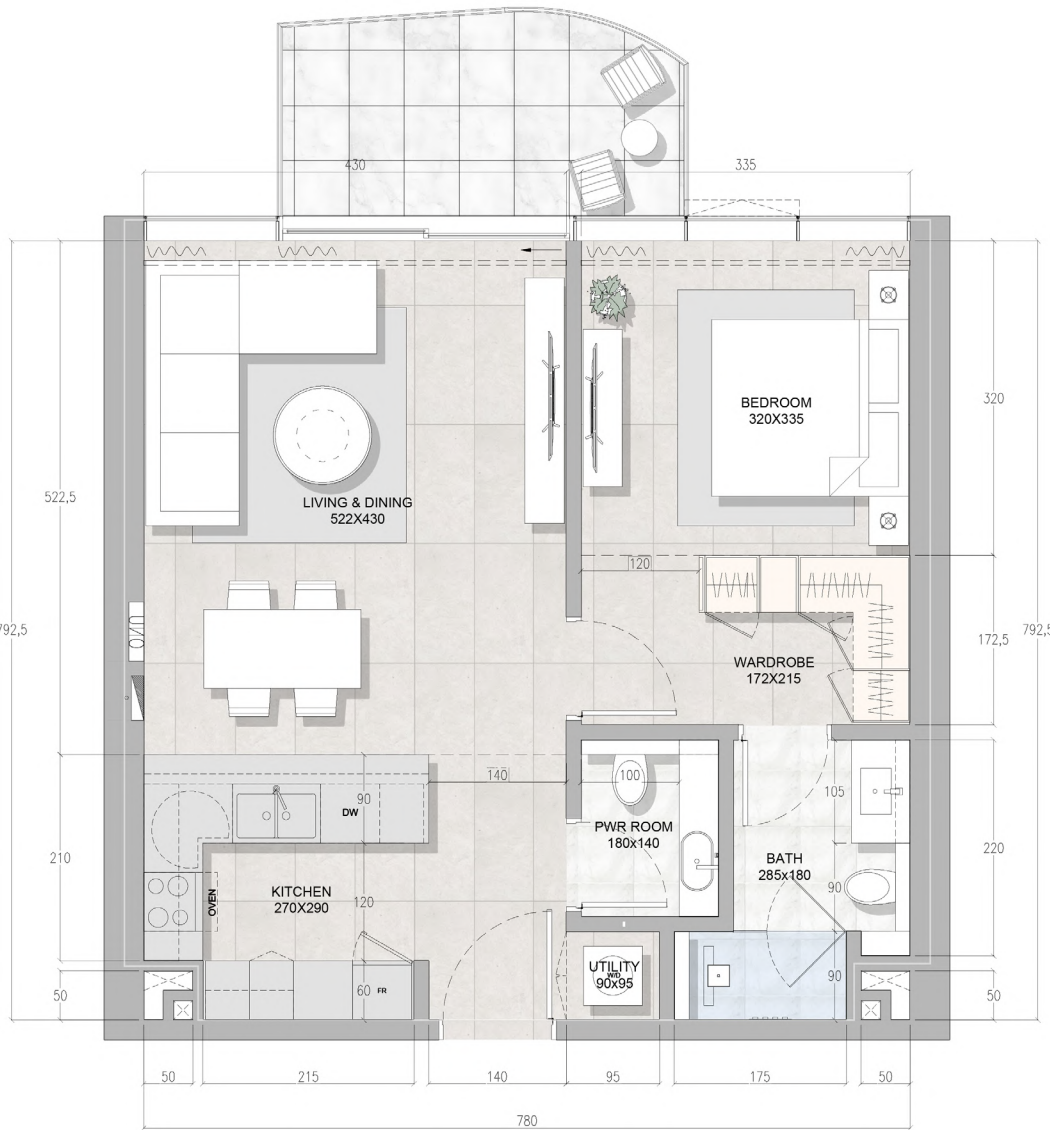


UNIT SIZE (FROM - TO)	SQM	SQFT
Internal Area	65.64	706.54
Balcony Area	8.00-14.30	73.64-104.43
Total Area	74.48	801.70

LOCATION	LEVELS	SERIES
SOLERA 1	2nd,3rd,4th,5th,6th,7th,8th,9th,10th	A-207,A-208,A-307,A-308,A-407,A-408,A-507,A-508,A-605,A-606,A-607,A-608,A-705,A-706,A-707,A-708,A-805,A-806,A-807,A-808,A-905,A-906,A-907,A-908,A-1005,A-1006,A-1007,A-1008
SOLERA 2	Pl,1st,2nd,3rd,4th,5th,6th,9th,10th,11th	B-P01,B-P02,B-P03,B-I05,B-I06,B-I07,B-I12,B-207,B-208,B-213,B-307,B-308,B-313,B-408,B-40,B-414,B-508,B-509,B-514,B-607,B-608,B-907,B-908,B-1007,B-1008,B-1107,B-1108
SOLERA 3	G,Pl,1st,2nd,3rd,4th,5th	C-G02,C-G03,C-P06,C-P07,C-I02,C-I08,C-I09,C-I12,C-202,C-203,C-207,C-302,C-304,C-402,C-404,C-502,C-504

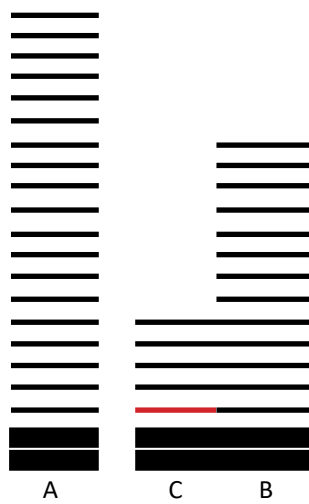


Floor plan numbers, square footage, and floor plans are approximate. Final dimensions, square footage and floor plans may vary or may be mirrored. Balcony area varies depending on location of unit on the floor.



Floor plan numbers, square footage, and floor plans are approximate. Final dimensions, square footage and floor plans may vary or may be mirrored. Balcony area varies depending on location of unit on the floor.

1 Bedroom Premium (1BR-B)

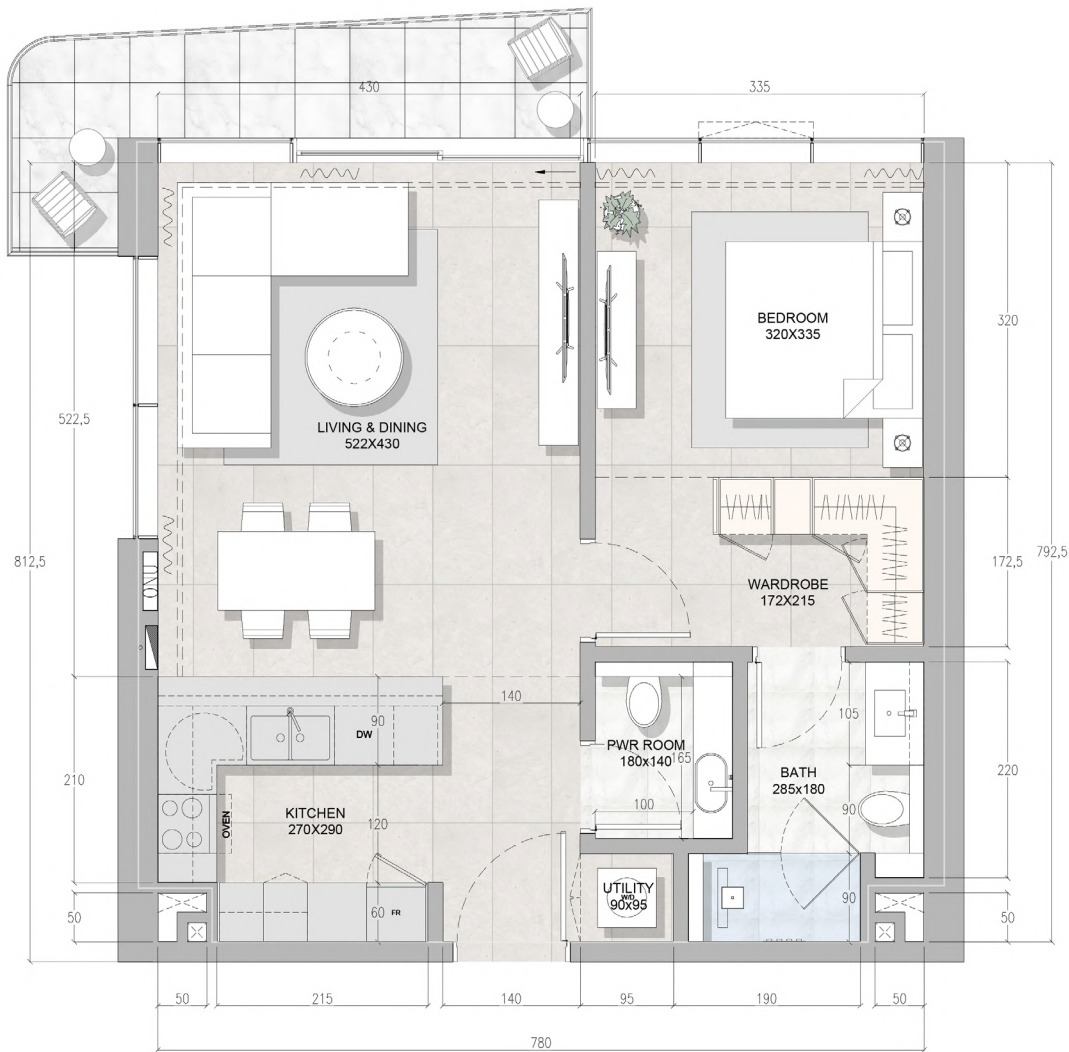


UNIT SIZE (FROM - TO)	SQM	SQFT
Internal Area	66.63	717.20
Balcony Area	8.76-15.23	94.29-163.93
Total Area	75.38	811.38

LOCATION	LEVELS	SERIES
SOLERA 1	--	--
SOLERA 2	--	--
SOLERA 3	Pl,1st,2nd	C-P08,C-110,C-111,C-212

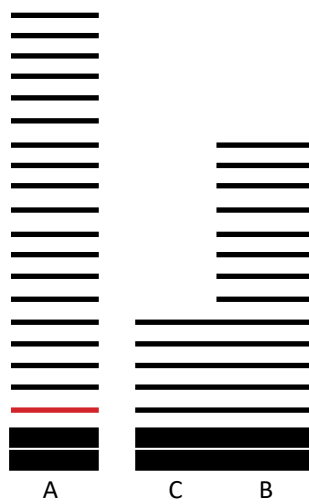


Floor plan numbers, square footage, and floor plans are approximate. Final dimensions, square footage and floor plans may vary or may be mirrored. Balcony area varies depending on location of unit on the floor.



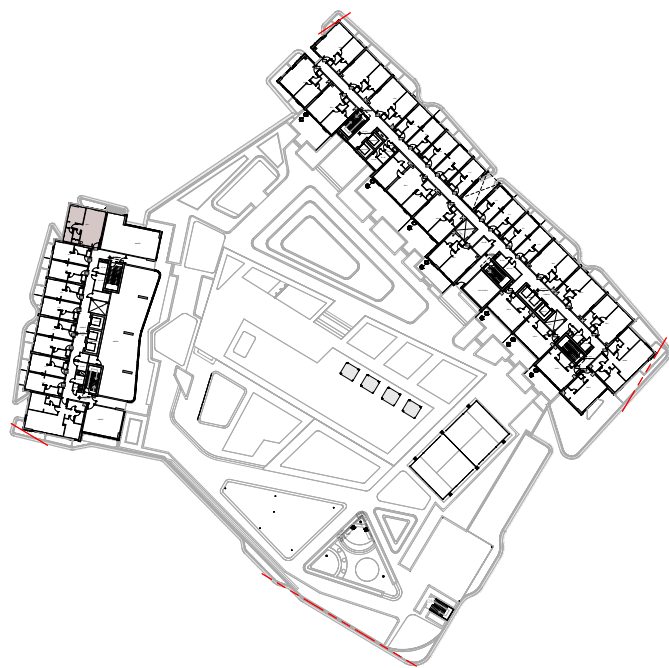
Floor plan numbers, square footage, and floor plans are approximate. Final dimensions, square footage and floor plans may vary or may be mirrored. Balcony area varies depending on location of unit on the floor.

1 Bedroom Corner (1BR-C)

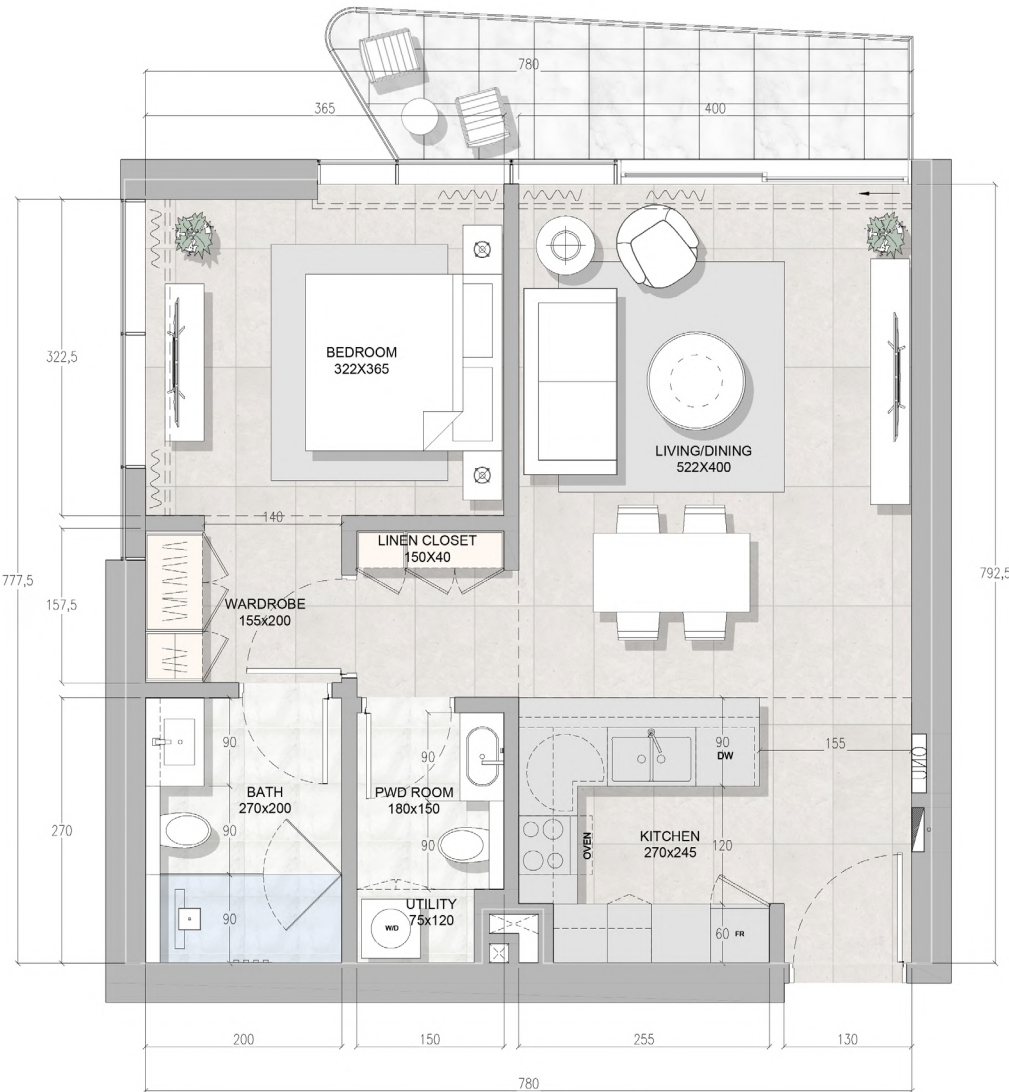


UNIT SIZE (FROM - TO)	SQM	SQFT
Internal Area	67.10	722.26
Balcony Area	7.90-8.44	85.03-90.85
Total Area	75.00	807.29

LOCATION	LEVELS	SERIES
SOLERA 1	Pl,1st	A-P09,A-101
SOLERA 2	4th,5th,7th,8th	B-405,B-505,B-709,B-809
SOLERA 3	--	--

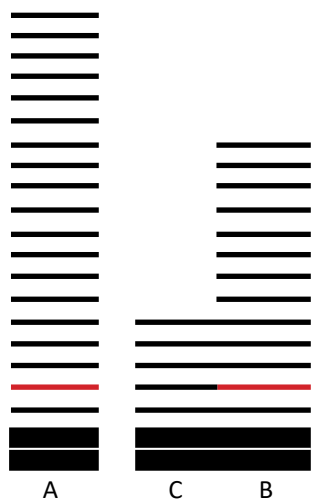


Floor plan numbers, square footage, and floor plans are approximate. Final dimensions, square footage and floor plans may vary or may be mirrored. Balcony area varies depending on location of unit on the floor.



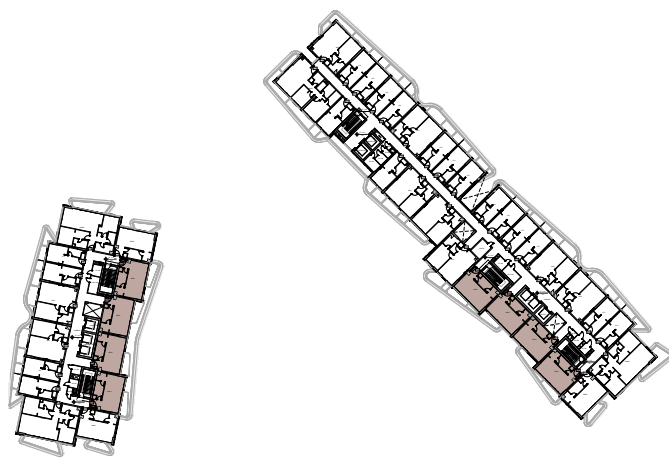
Floor plan numbers, square footage, and floor plans are approximate. Final dimensions, square footage and floor plans may vary or may be mirrored. Balcony area varies depending on location of unit on the floor.

1 Bedroom suite (1BRS-A)

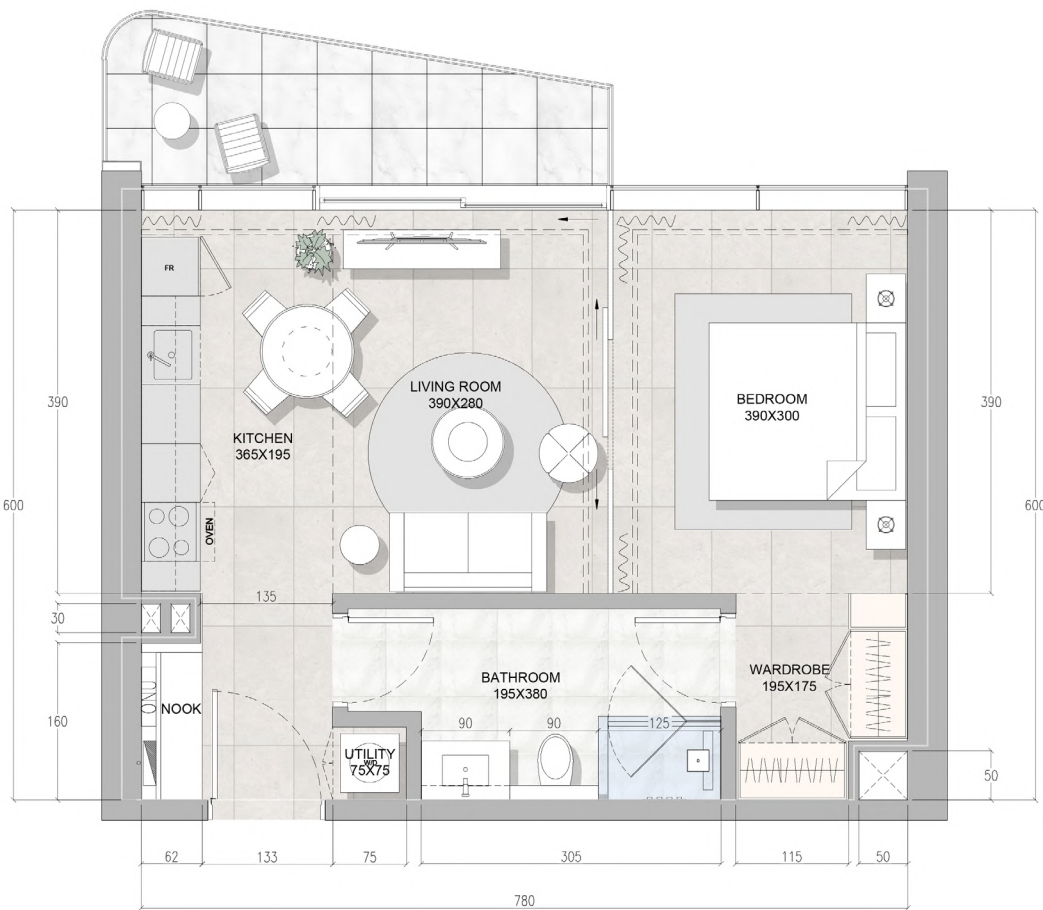


UNIT SIZE (FROM - TO)	SQM	SQFT
Internal Area	50.06	538.84
Balcony Area	6.89-7.67	74.16-82.56
Total Area	56.95-57.73	613.00-621.40

LOCATION	LEVELS	SERIES
SOLERA 1	2nd,3rd,4th,5th,6th,7th,8th,9th,10th,11th,12th,13th,14th,15th,16th,17th,18th	A-201,A-202,A-213,A-214,A-301,A-302,A-313,A-314,A-401,A-402,A-413,A-414,A-501,A-502,A-513,A-514,A-601,A-602,A-611,A-612,A-701,A-702,A-711,A-712,A-801,A-802,A-811,A-812,A-901,A-902,A-911,A-912,A-1001,A-1002,A-1011,A-1012,A-1101,A-1102,A-1111,A-1112,A-1201,A-1202,A-1211,A-1212,A-1301,A-1302,A-1311,A-1312,A-1401,A-1402,A-1409,A-1410,A-1501,A-1502,A-1509,A-1510,A-1601,A-1602,A-1609,A-1610,A-1701,A-1702,A-1709,A-1710,A-1801,A-1802,A-1807,A-1808
SOLERA 2	1st,2nd,3rd,4th,5th,6th,7th,8th,9th,10th,11th	B-101,B-102,B-113,B-201,B-202,B-214,B-215,B-301,B-302,B-314,B-315,B-401,B-402,B-415,B-416,B-501,B-502,B-515,B-516,B-601,B-602,B-612,B-613,B-701,B-702,B-712,B-713,B-801,B-802,B-812,B-813,B-901,B-902,B-913,B-914,B-1001,B-1002,B-1013,B-1014,B-1101,B-1102,B-1113,B-1114
SOLERA 3	--	--

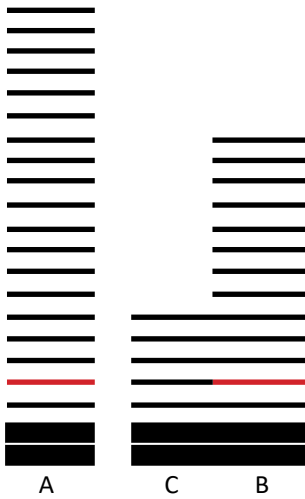


Floor plan numbers, square footage, and floor plans are approximate. Final dimensions, square footage and floor plans may vary or may be mirrored. Balcony area varies depending on location of unit on the floor.



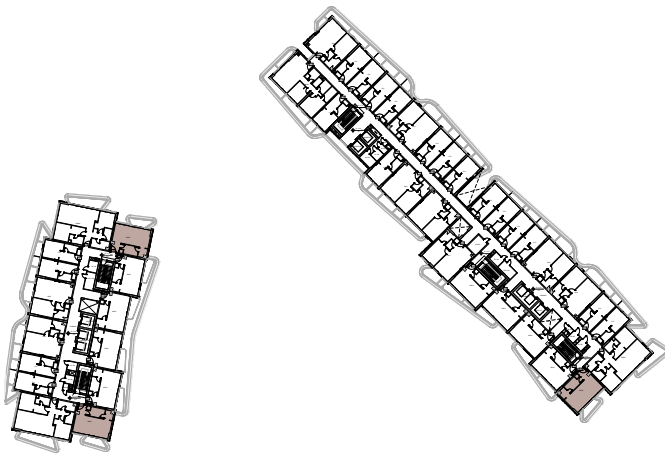
Floor plan numbers, square footage, and floor plans are approximate. Final dimensions, square footage and floor plans may vary or may be mirrored. Balcony area varies depending on location of unit on the floor.

1 Bedroom suite (1BRS-B)



UNIT SIZE (FROM - TO)	SQM	SQFT
Internal Area	50.85	547.34
Balcony Area	5.90-7.08	63.51-76.21
Total Area	56.75-57.93	610.85-628.55

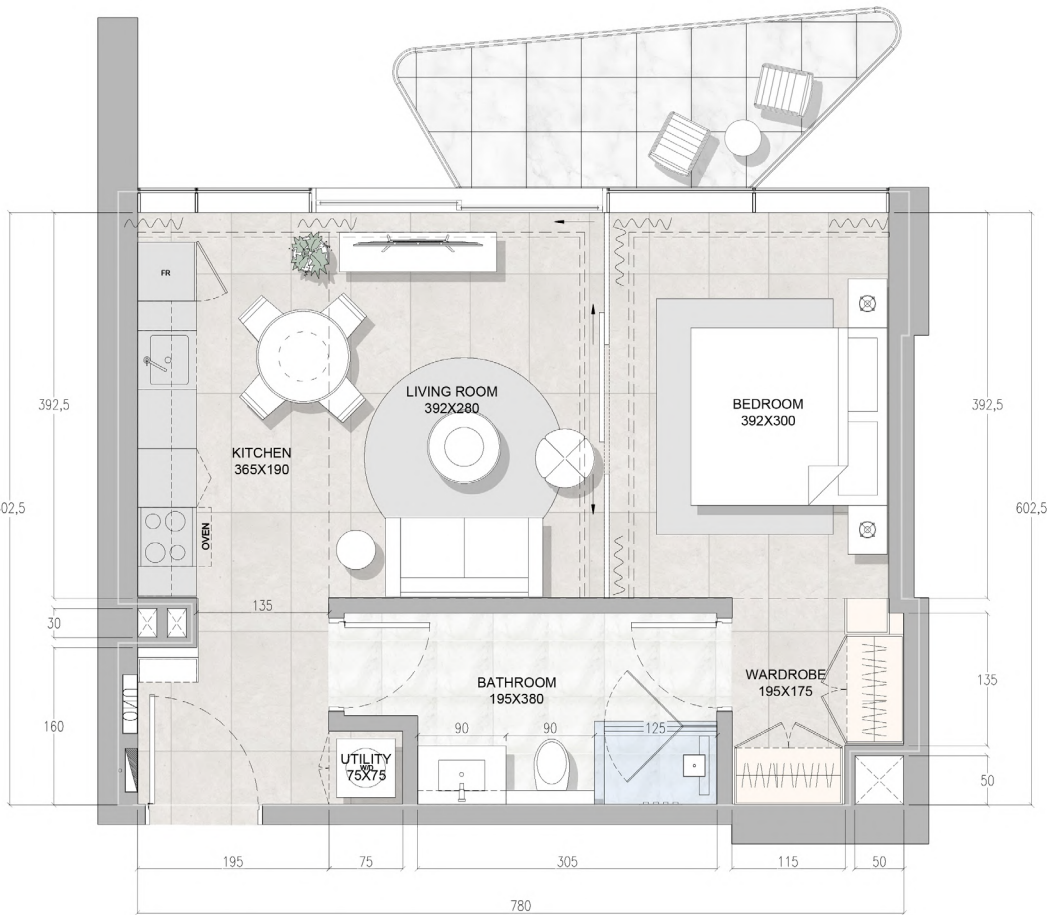
LOCATION	LEVELS	SERIES
SOLERA 1	Pl,2nd,3rd,4th,5th,6th,7th,8th,9th,10th,11th,12th,13th,14th,15th,16th,17th,18th	A-P11,A-203,A-212,A-303,A-312,A-403,A-412,A-503,A-512,A-603,A-610,A-703,A-710,A-803,A-810,A-903,A-910,A-1003,A-1010,A-1103,A-1110,A-1203,A-1210,A-1303,A-1310,A-1403,A-1408,A-1503,A-1508,A-1603,A-1608,A-1703,A-1708,A-1803,A-1806
SOLERA 2	7th,8th,9th,10th,11th	B-711,B-803,B-811,B-903,B-912,B-1003,B-1012,B-1103,B-1112
SOLERA 3	--	--



Floor plan numbers, square footage, and floor plans are approximate. Final dimensions, square footage and floor plans may vary or may be mirrored. Balcony area varies depending on location of unit on the floor.

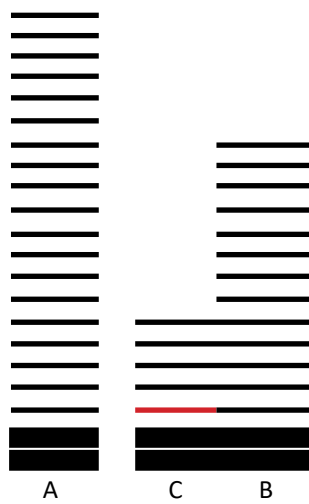


N



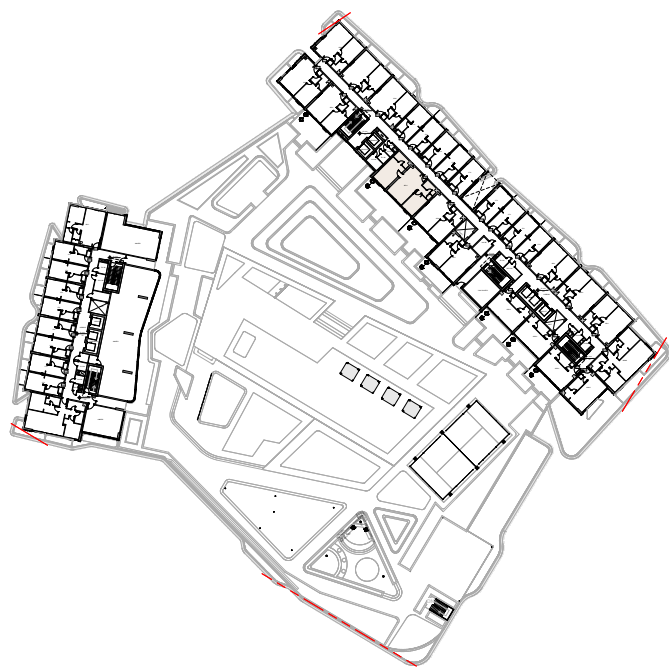
Floor plan numbers, square footage, and floor plans are approximate. Final dimensions, square footage and floor plans may vary or may be mirrored. Balcony area varies depending on location of unit on the floor.

2 Bedroom (2BR-A)

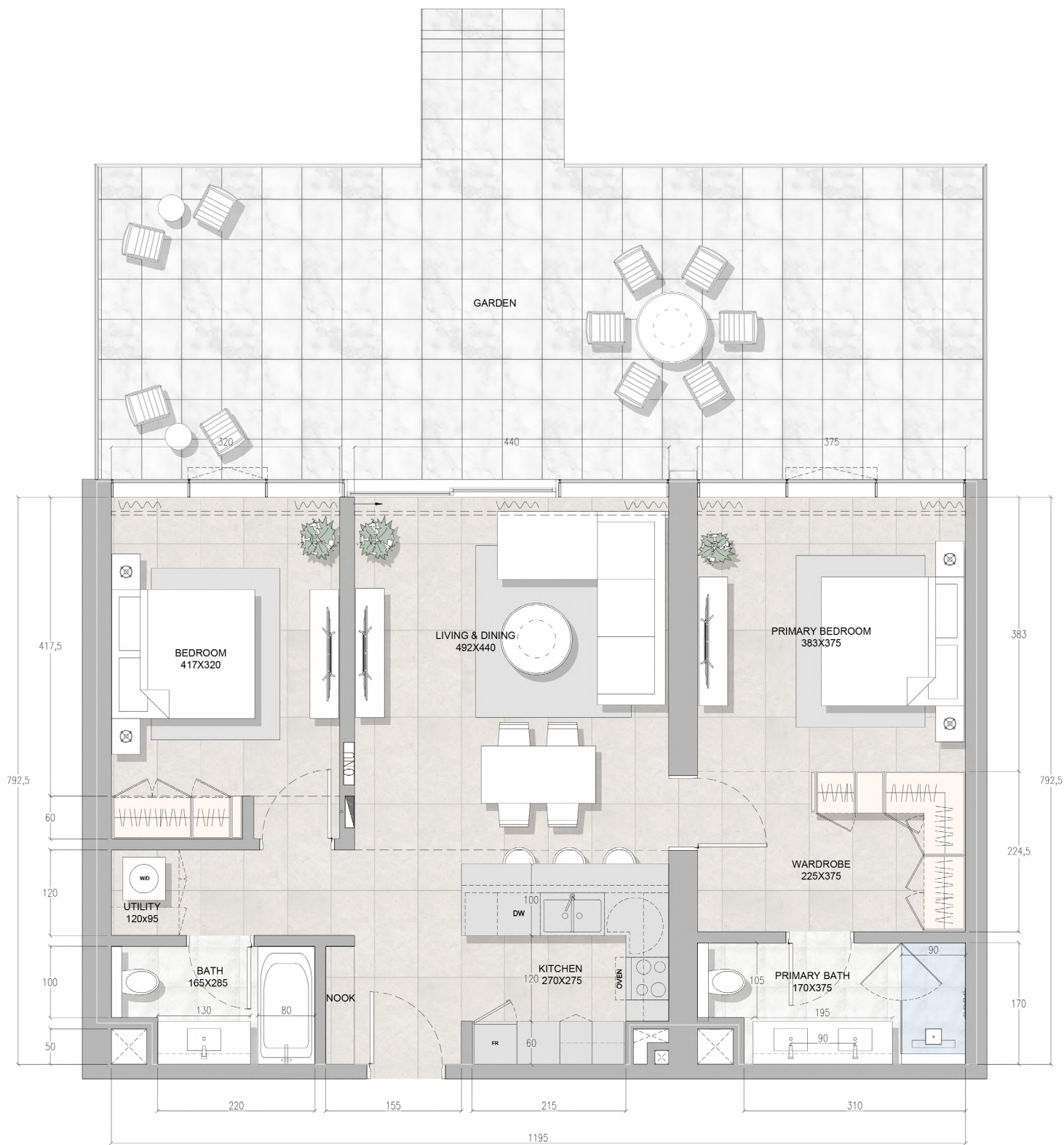


UNIT SIZE (FROM - TO)	SQM	SQFT
Internal Area	98.59	1061.21
Balcony Area	9.84-50.12	105.92-539.49
Total Area	108.43-148.71	1167.13-1600.70

LOCATION	LEVELS	SERIES
SOLERA 1	11th,12th,13th,14th,15th,16th,17th	A-1106,A-1107,A-1206,A-1207,A-1306,A-1307,A-1405,A-1406,A-1505,A-1506,A-1605,A-1606,A-1705,A-1706
SOLERA 2	G,7th,8th	B-G02,B-G03,B-706,B-707,B-806,B-807
SOLERA 3	G,1st,3rd,4th,5th	C-G01,C-101,C-301,C-303,C-305,C-401,C-403,C-405,C-501,C-503,C-505

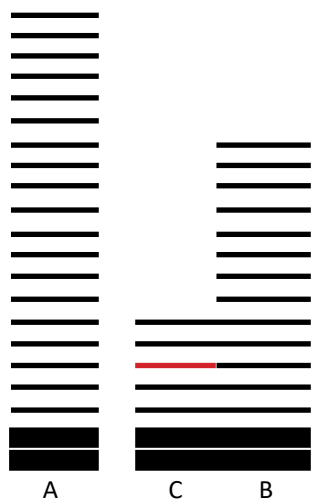


Floor plan numbers, square footage, and floor plans are approximate. Final dimensions, square footage and floor plans may vary or may be mirrored. Balcony area varies depending on location of unit on the floor.



Floor plan numbers, square footage, and floor plans are approximate. Final dimensions, square footage and floor plans may vary or may be mirrored. Balcony area varies depending on location of unit on the floor.

2 Bedroom + Maid (2BRM-A)



UNIT SIZE (FROM - TO)	SQM	SQFT
Internal Area	99.56	1071.65
Balcony Area	11.95-12.69	128.63-136.59
Total Area	111.61-112.25	1201.36-1208.25

LOCATION	LEVELS	SERIES
SOLERA 1	--	--
SOLERA 2	--	--
SOLERA 3	2nd,3rd,4th,5th	C-213,C-306,C-307,C-406,C-407,C-506,C-507

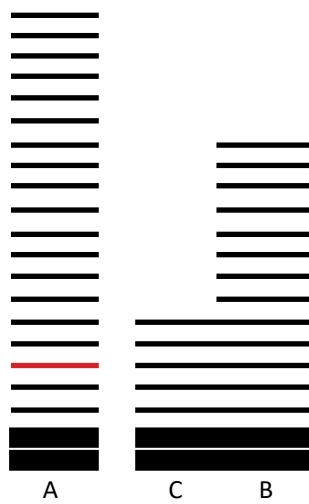


Floor plan numbers, square footage, and floor plans are approximate. Final dimensions, square footage and floor plans may vary or may be mirrored. Balcony area varies depending on location of unit on the floor.



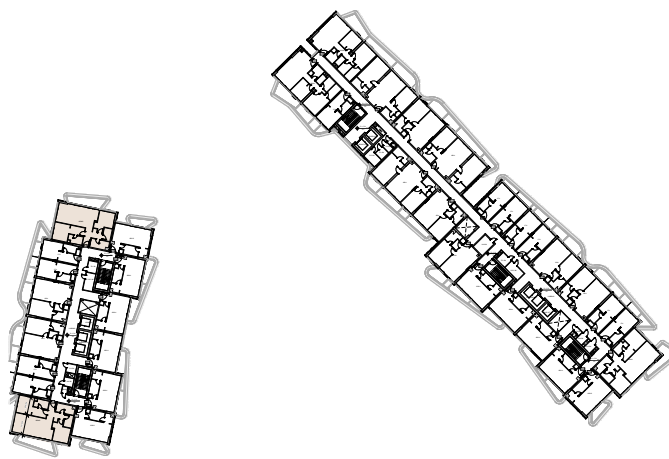
Floor plan numbers, square footage, and floor plans are approximate. Final dimensions, square footage and floor plans may vary or may be mirrored. Balcony area varies depending on location of unit on the floor.

2 Bedroom + Maid (2BRM-B)



UNIT SIZE (FROM - TO)	SQM	SQFT
Internal Area	100.29	1079.51
Balcony Area	13.82-15.00	148.76-161.46
Total Area	114.11-115.27	1228.27-1240.76

LOCATION	LEVELS	SERIES
SOLERA 1	1st,2nd,3rd,4th,5th,6th,7th,8th,9th,10th	A-110,A-204,A-211,A-304,A-311,A-404,A-411,A-504,A-511,A-604,A-609,A-704,A-709,A-804,A-809,A-904,A-909,A-1004,A-1009
SOLERA 2	1st,2nd,3rd,6th,7th,8th,9th,10th,11th	B-104,B-204,B-304,B-604,B-704,B-804,B-904,B-911,B-1004,B-1011,B-1104,B-1111
SOLERA 3	--	--

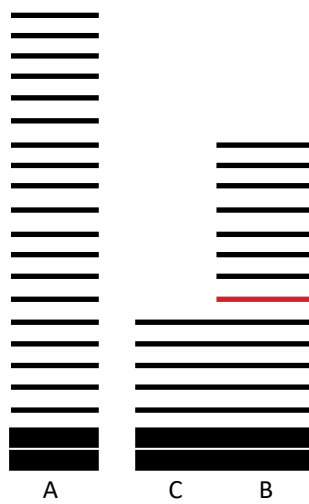


Floor plan numbers, square footage, and floor plans are approximate. Final dimensions, square footage and floor plans may vary or may be mirrored. Balcony area varies depending on location of unit on the floor.



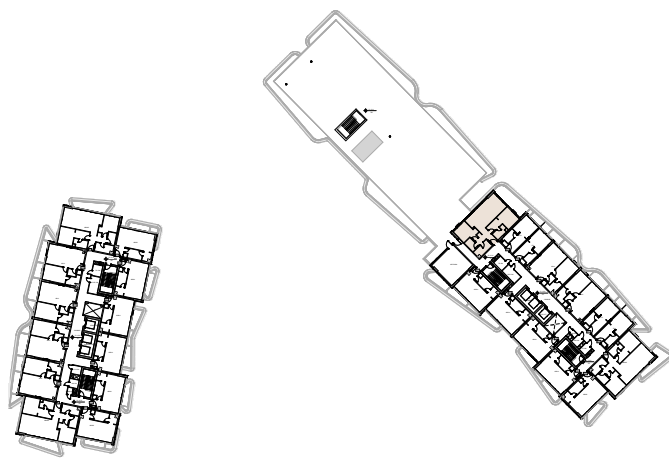
Floor plan numbers, square footage, and floor plans are approximate. Final dimensions, square footage and floor plans may vary or may be mirrored. Balcony area varies depending on location of unit on the floor.

2 Bedroom + Maid (2BRM-B')

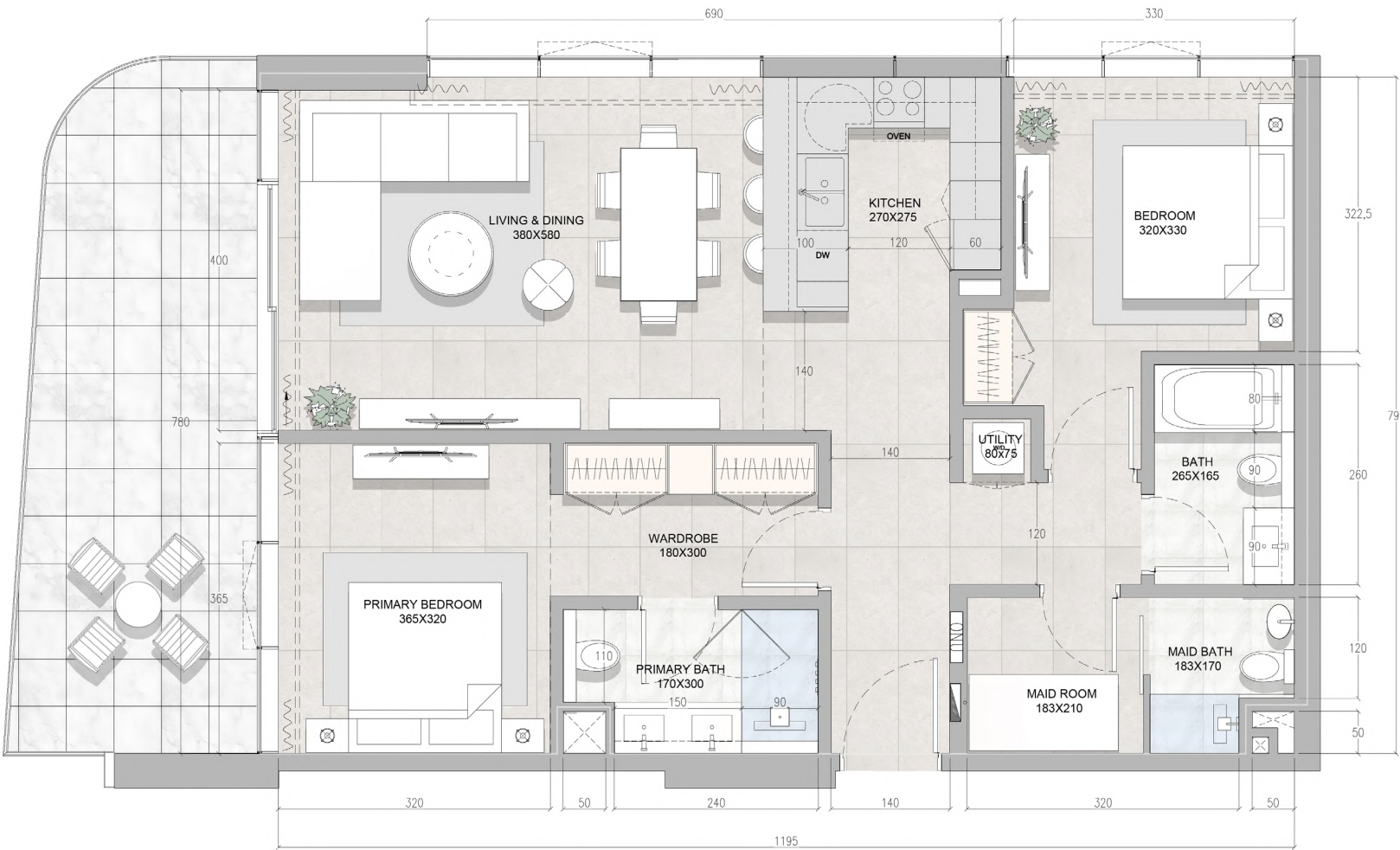


UNIT SIZE (FROM - TO)	SQM	SQFT
Internal Area	98.7	1062.40
Balcony Area	22.16	238.53
Total Area	120.86	1300.93

LOCATION	LEVELS	SERIES
SOLERA 1	--	--
SOLERA 2	6th	B-6II
SOLERA 3	--	--

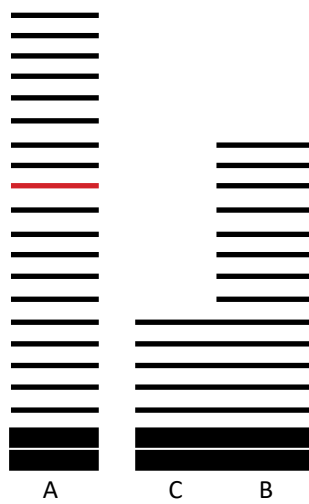


Floor plan numbers, square footage, and floor plans are approximate. Final dimensions, square footage and floor plans may vary or may be mirrored. Balcony area varies depending on location of unit on the floor.



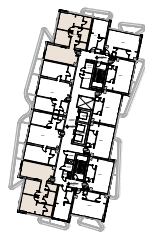
Floor plan numbers, square footage, and floor plans are approximate. Final dimensions, square footage and floor plans may vary or may be mirrored. Balcony area varies depending on location of unit on the floor.

2 Bedroom + Maid (2BRM-C)

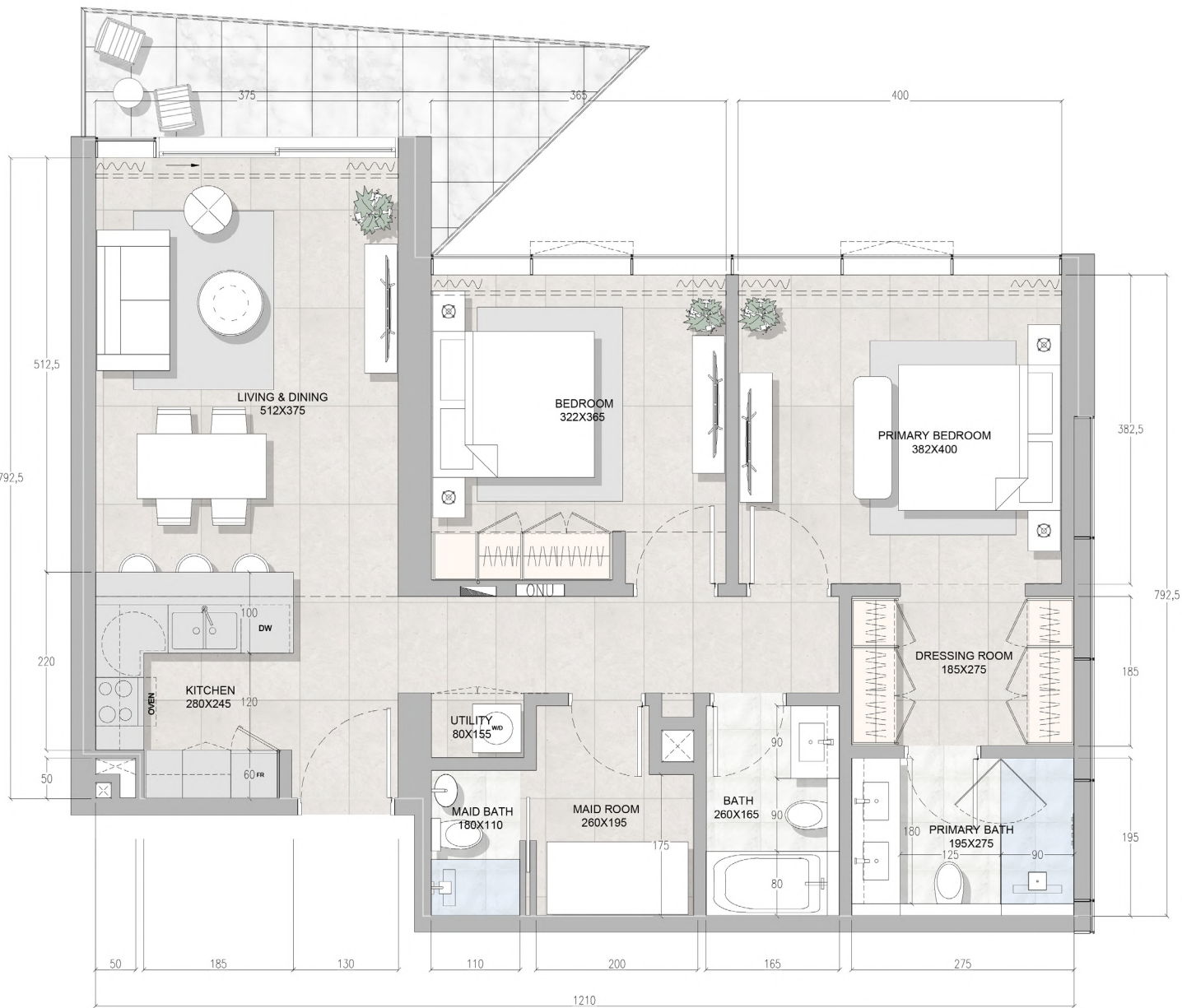


UNIT SIZE (FROM - TO)	SQM	SQFT
Internal Area	100.41	1080.80
Balcony Area	10.67	114.85
Total Area	111.08	1195.66

LOCATION	LEVELS	SERIES
SOLERA 1	11th,12th,13th	A-1105,A-1108,A-1205,A-1208,A-1305,A-1308
SOLERA 2	--	--
SOLERA 3	--	--

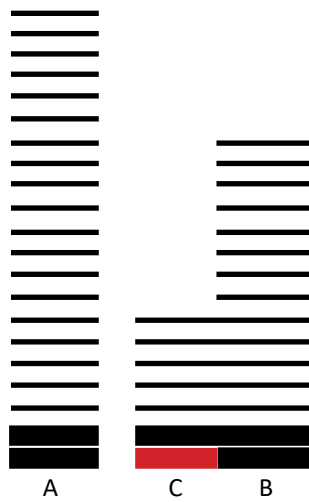


Floor plan numbers, square footage, and floor plans are approximate. Final dimensions, square footage and floor plans may vary or may be mirrored. Balcony area varies depending on location of unit on the floor.



Floor plan numbers, square footage, and floor plans are approximate. Final dimensions, square footage and floor plans may vary or may be mirrored. Balcony area varies depending on location of unit on the floor.

3 Bedroom (3BR-A)

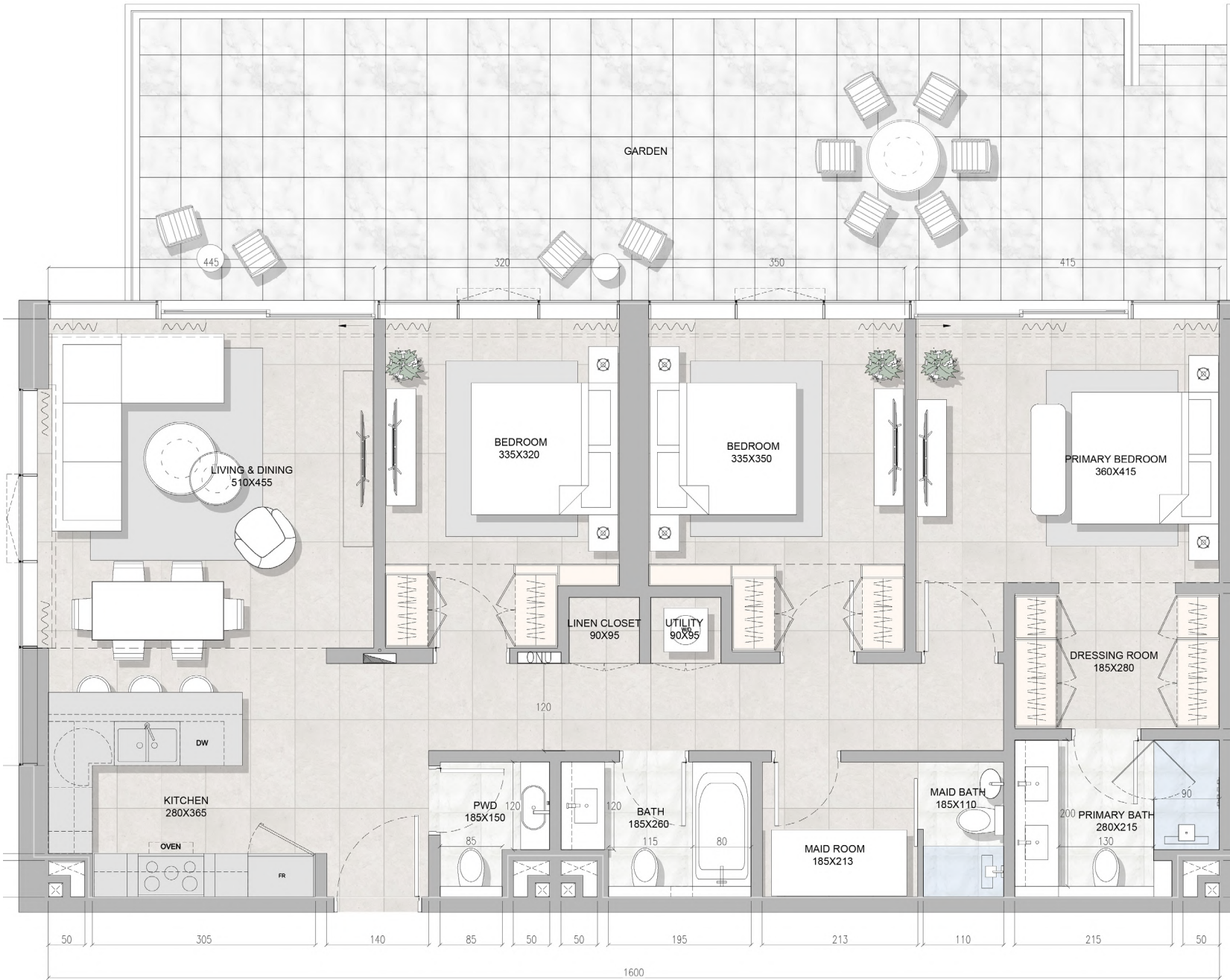


UNIT SIZE (FROM - TO)	SQM	SQFT
Internal Area	132.61	1427.40
Balcony Area	58.94	634.42
Total Area	191.55	2061.83

LOCATION	LEVELS	SERIES
SOLERA 1	--	--
SOLERA 2	--	--
SOLERA 3	G	C-G04

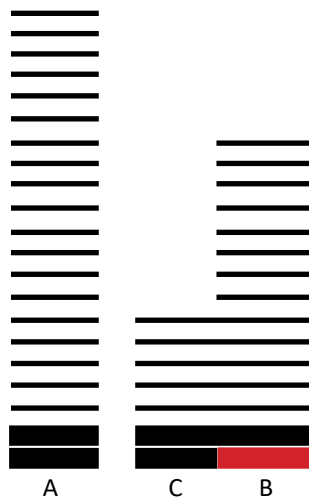


Floor plan numbers, square footage, and floor plans are approximate. Final dimensions, square footage and floor plans may vary or may be mirrored. Balcony area varies depending on location of unit on the floor.



Floor plan numbers, square footage, and floor plans are approximate. Final dimensions, square footage and floor plans may vary or may be mirrored. Balcony area varies depending on location of unit on the floor.

3 Bedroom (3BR-A')

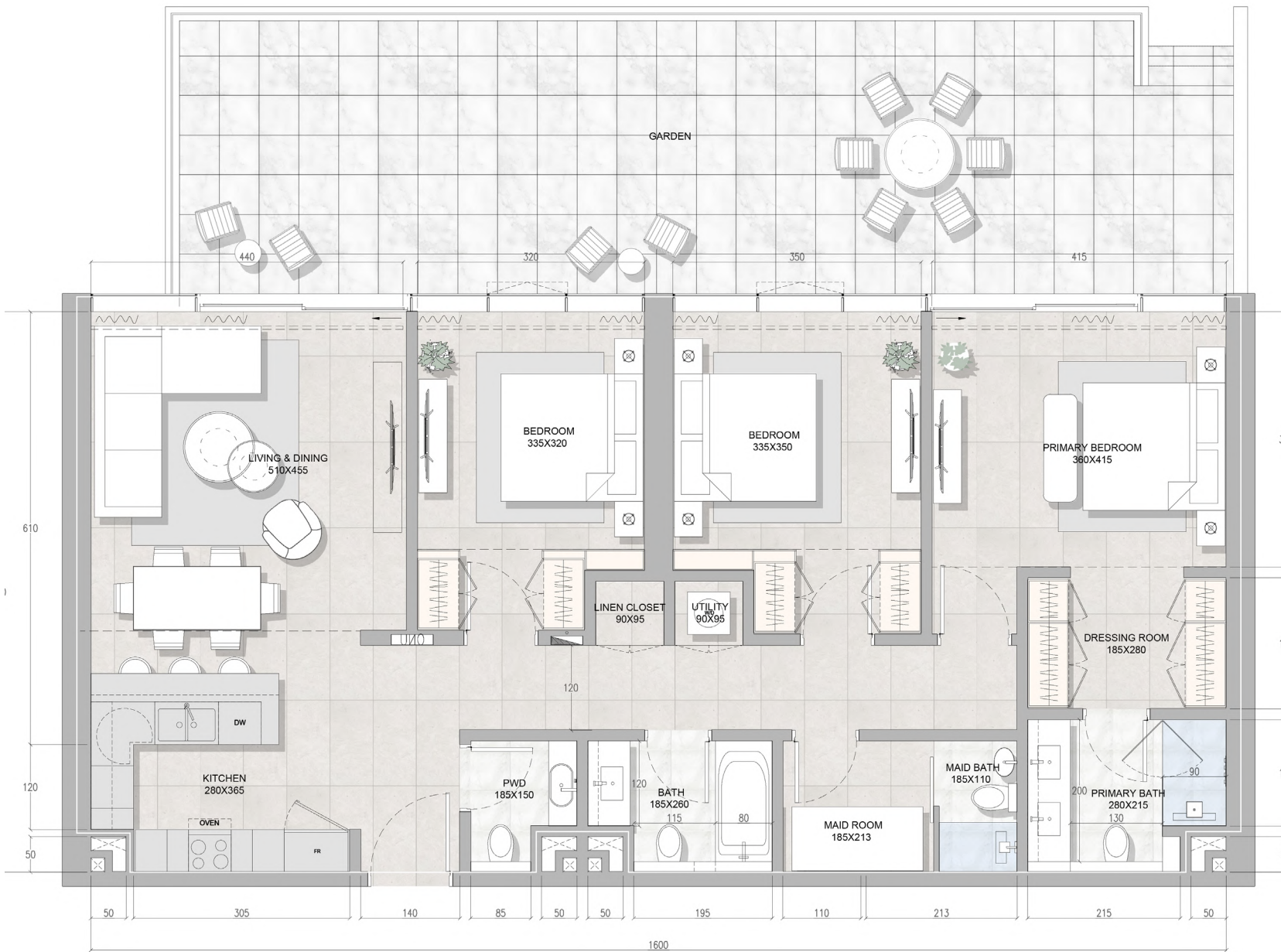


UNIT SIZE (FROM - TO)	SQM	SQFT
Internal Area	130.48	1404.48
Balcony Area	66.92	720.32
Total Area	197.40	2124.80

LOCATION	LEVELS	SERIES
SOLERA 1	--	--
SOLERA 2	G	B-G01
SOLERA 3	--	--

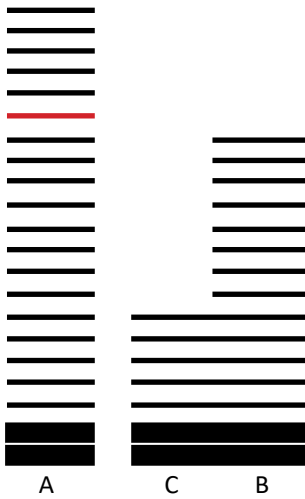


Floor plan numbers, square footage, and floor plans are approximate. Final dimensions, square footage and floor plans may vary or may be mirrored. Balcony area varies depending on location of unit on the floor.



Floor plan numbers, square footage, and floor plans are approximate. Final dimensions, square footage and floor plans may vary or may be mirrored. Balcony area varies depending on location of unit on the floor.

3 Bedroom (3BR-B)



UNIT SIZE (FROM - TO)	SQM	SQFT
Internal Area	132.99	1431.49
Balcony Area	28.96	311.72
Total Area	161.95	1743.22

LOCATION	LEVELS	SERIES
SOLERA 1	14th,15th,16th,17th	A-1404,A-1407,A-1504,A-1507,A-1604,A-1607,A-1704,A-1707
SOLERA 2	--	--
SOLERA 3	--	--

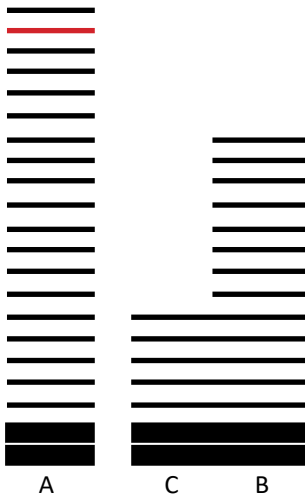


Floor plan numbers, square footage, and floor plans are approximate. Final dimensions, square footage and floor plans may vary or may be mirrored. Balcony area varies depending on location of unit on the floor.



Floor plan numbers, square footage, and floor plans are approximate. Final dimensions, square footage and floor plans may vary or may be mirrored. Balcony area varies depending on location of unit on the floor.

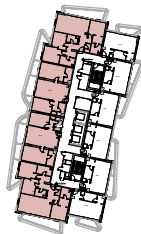
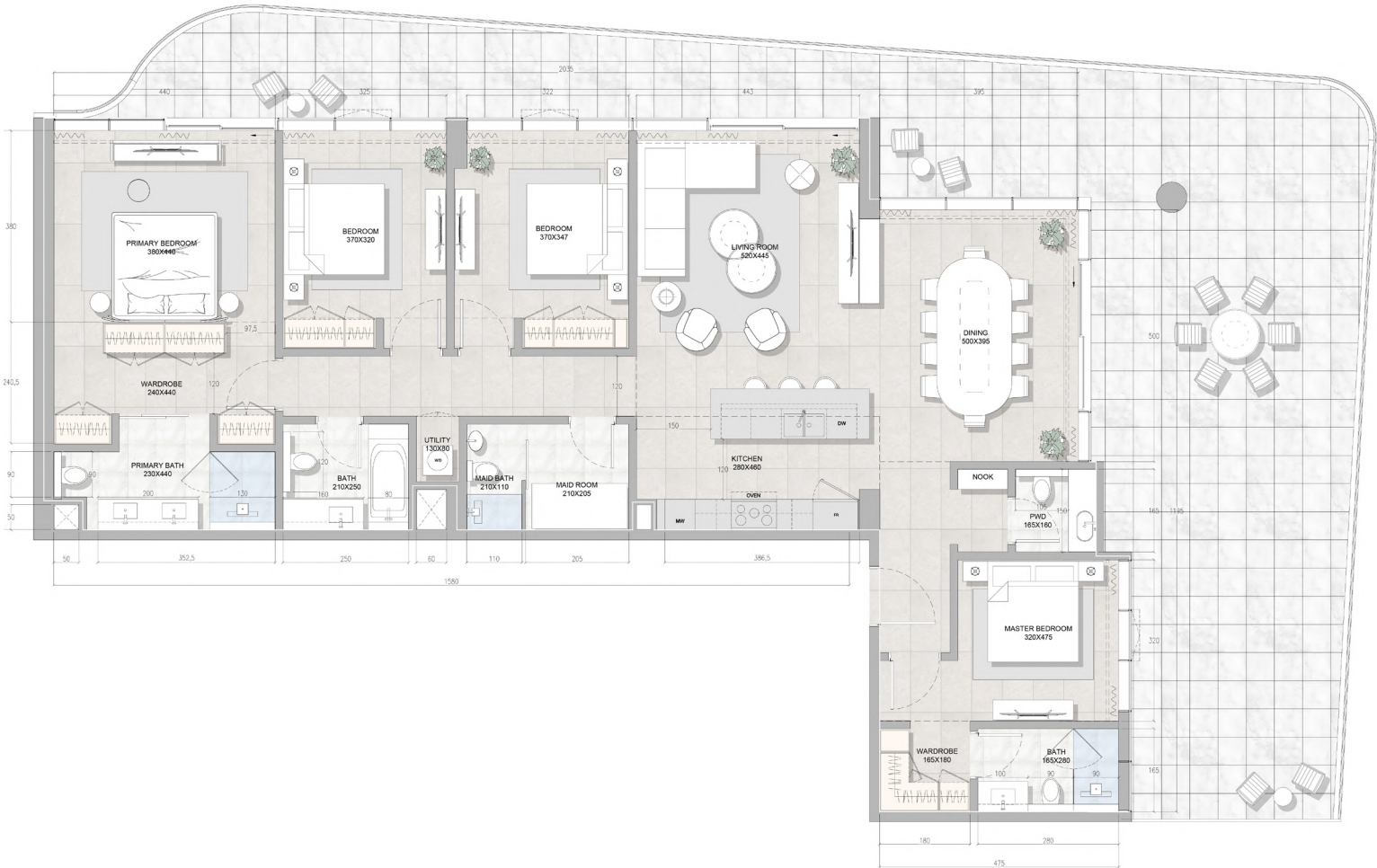
Penthouse



UNIT SIZE (FROM - TO)	SQM	SQFT
Internal Area	187.74	2020.82
Balcony Area	115.87	1247.21
Total Area	303.61	3268.03



LOCATION	LEVELS	SERIES
SOLERA 1	18th	A-1804,A-1805
SOLERA 2	12th	B-1201,B-1202
SOLERA 3	--	--



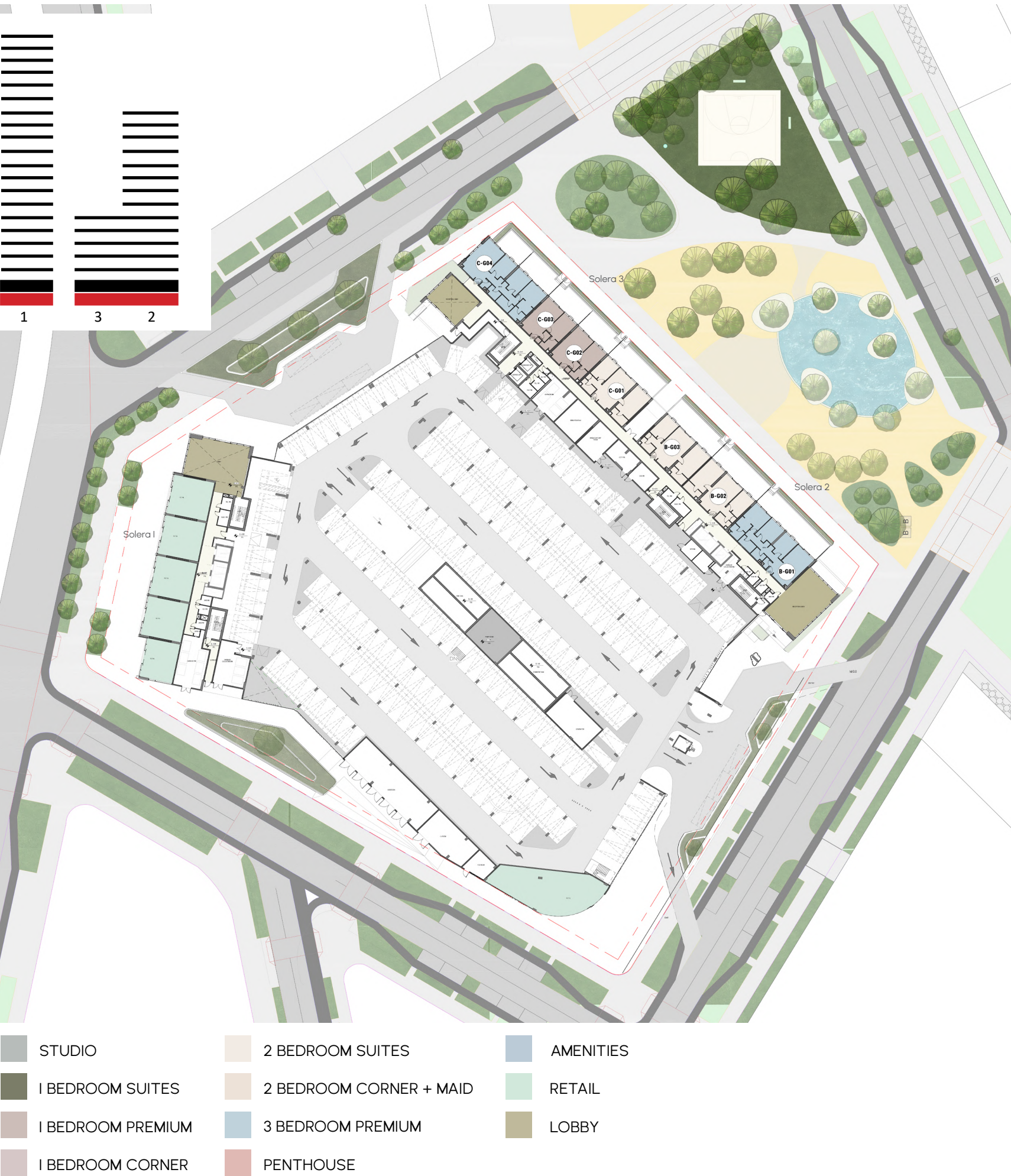
Floor plan numbers, square footage, and floor plans are approximate. Final dimensions, square footage and floor plans may vary or may be mirrored. Balcony area varies depending on location of unit on the floor.

Floor plan numbers, square footage, and floor plans are approximate. Final dimensions, square footage and floor plans may vary or may be mirrored. Balcony area varies depending on location of unit on the floor.



Floor Plans

Ground Floor



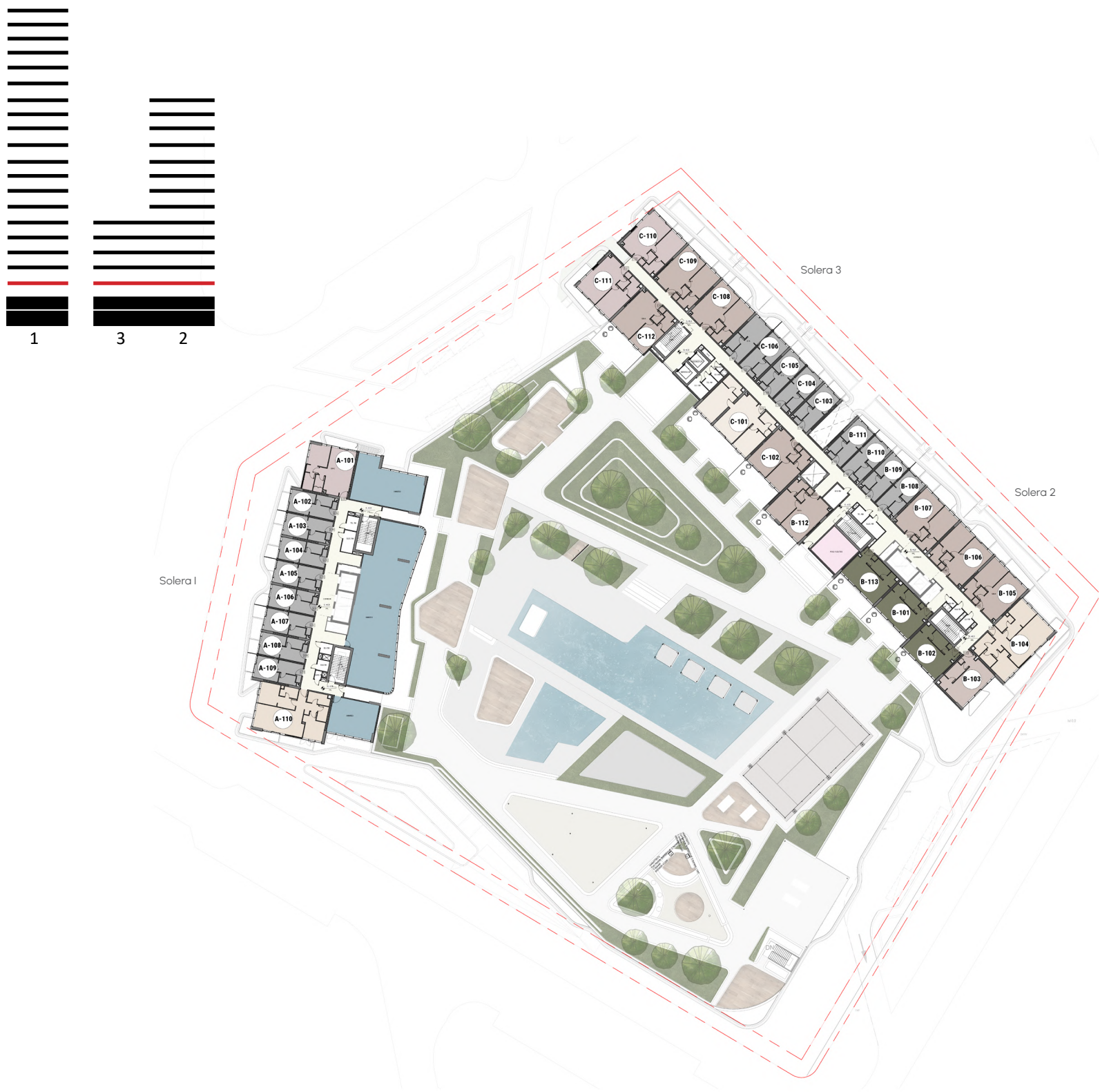
Floor plan numbers, square footage, and floor plans are approximate. Final dimensions, square footage and floor plans may vary or may be mirrored. Balcony area varies depending on location of unit on the floor.

Podium



Floor plan numbers, square footage, and floor plans are approximate. Final dimensions, square footage and floor plans may vary or may be mirrored. Balcony area varies depending on location of unit on the floor.

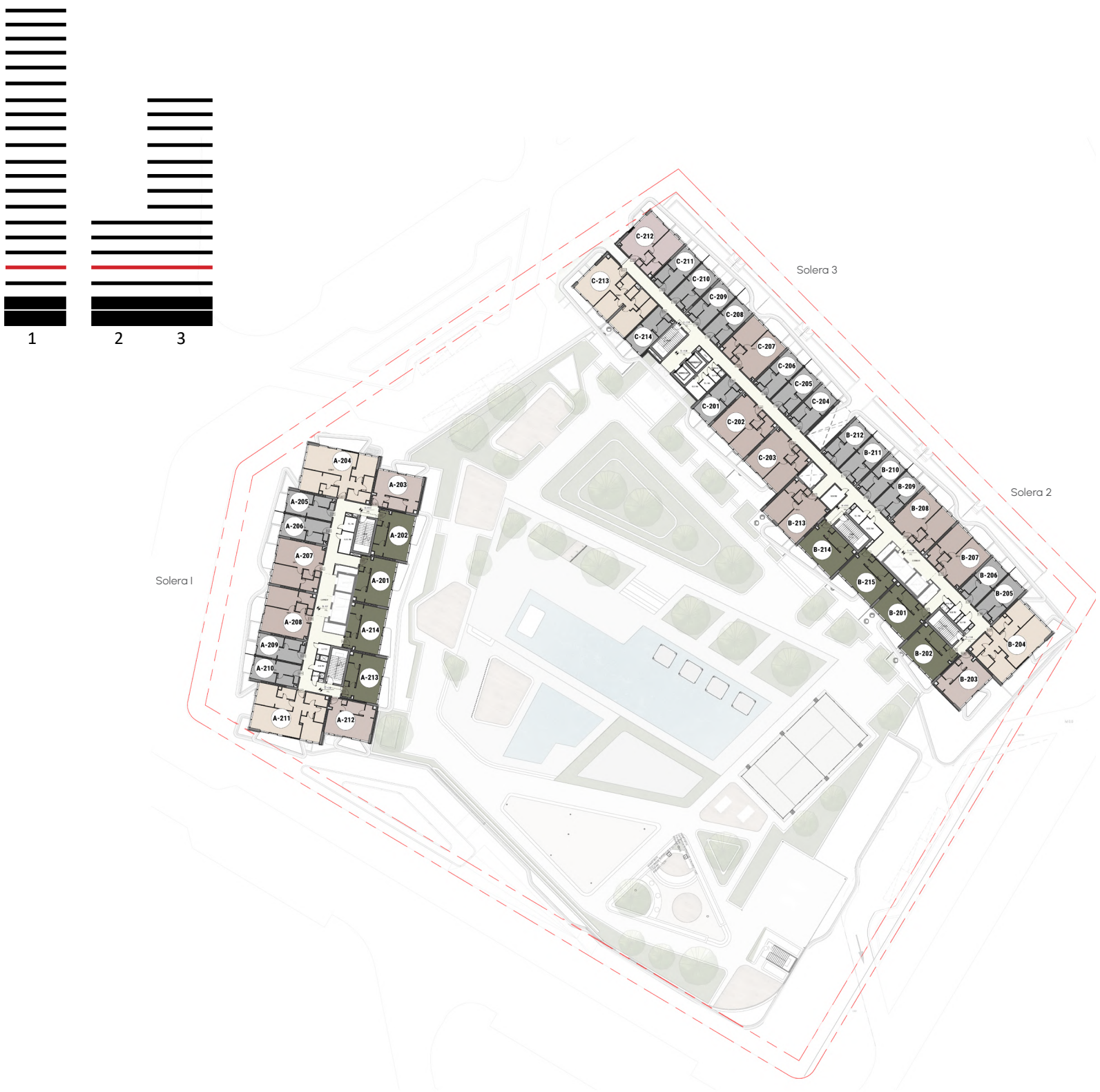
First floor



- | | | |
|-------------------|-------------------------|-----------|
| STUDIO | 2 BEDROOM SUITES | AMENITIES |
| 1 BEDROOM SUITES | 2 BEDROOM CORNER + MAID | RETAIL |
| 1 BEDROOM PREMIUM | 3 BEDROOM PREMIUM | LOBBY |
| 1 BEDROOM CORNER | PENTHOUSE | |

Floor plan numbers, square footage, and floor plans are approximate. Final dimensions, square footage and floor plans may vary or may be mirrored. Balcony area varies depending on location of unit on the floor.

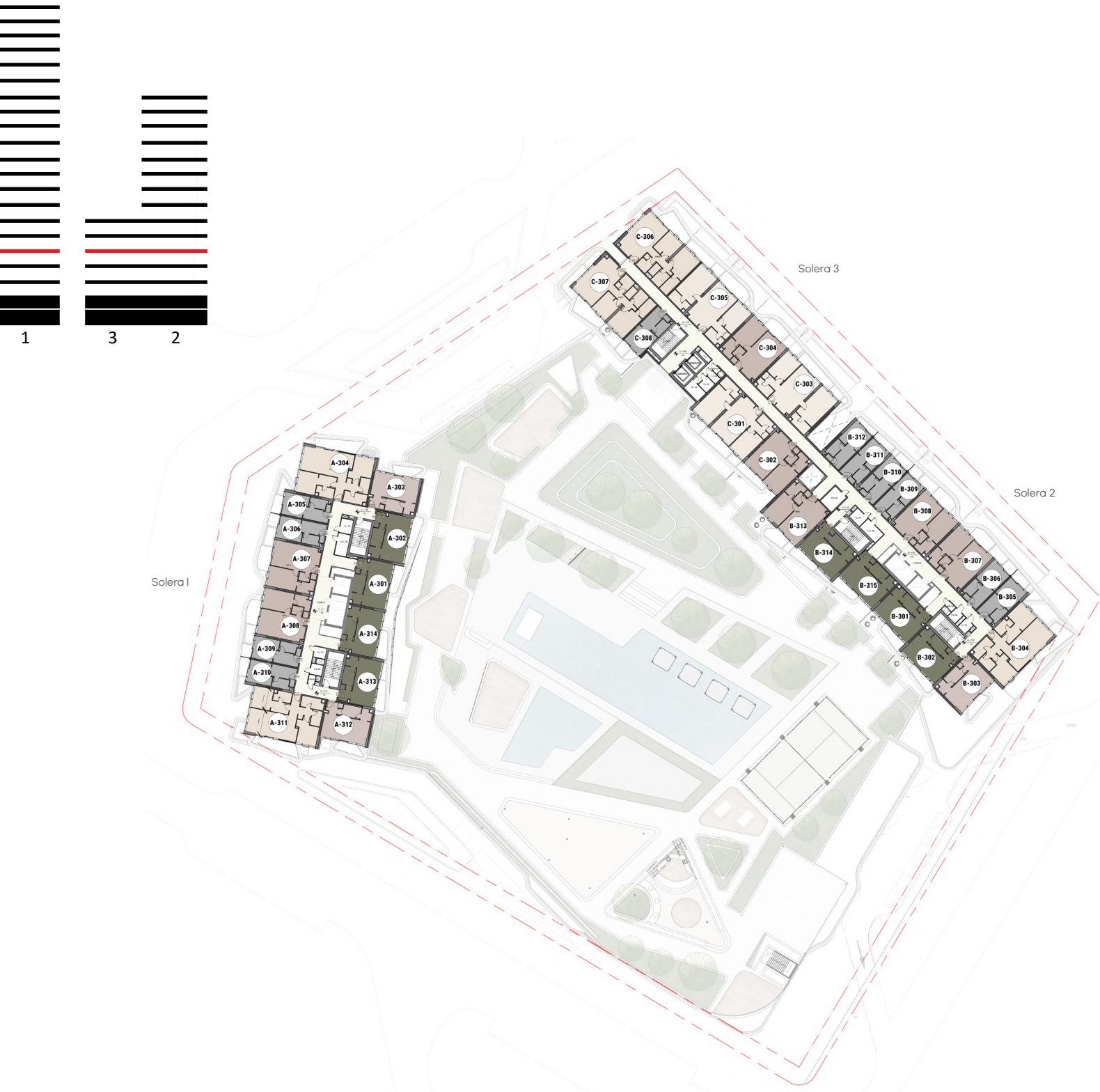
Second floor



- | | | |
|-------------------|-------------------------|-----------|
| STUDIO | 2 BEDROOM SUITES | AMENITIES |
| 1 BEDROOM SUITES | 2 BEDROOM CORNER + MAID | RETAIL |
| 1 BEDROOM PREMIUM | 3 BEDROOM PREMIUM | LOBBY |
| 1 BEDROOM CORNER | PENTHOUSE | |

Floor plan numbers, square footage, and floor plans are approximate. Final dimensions, square footage and floor plans may vary or may be mirrored. Balcony area varies depending on location of unit on the floor.

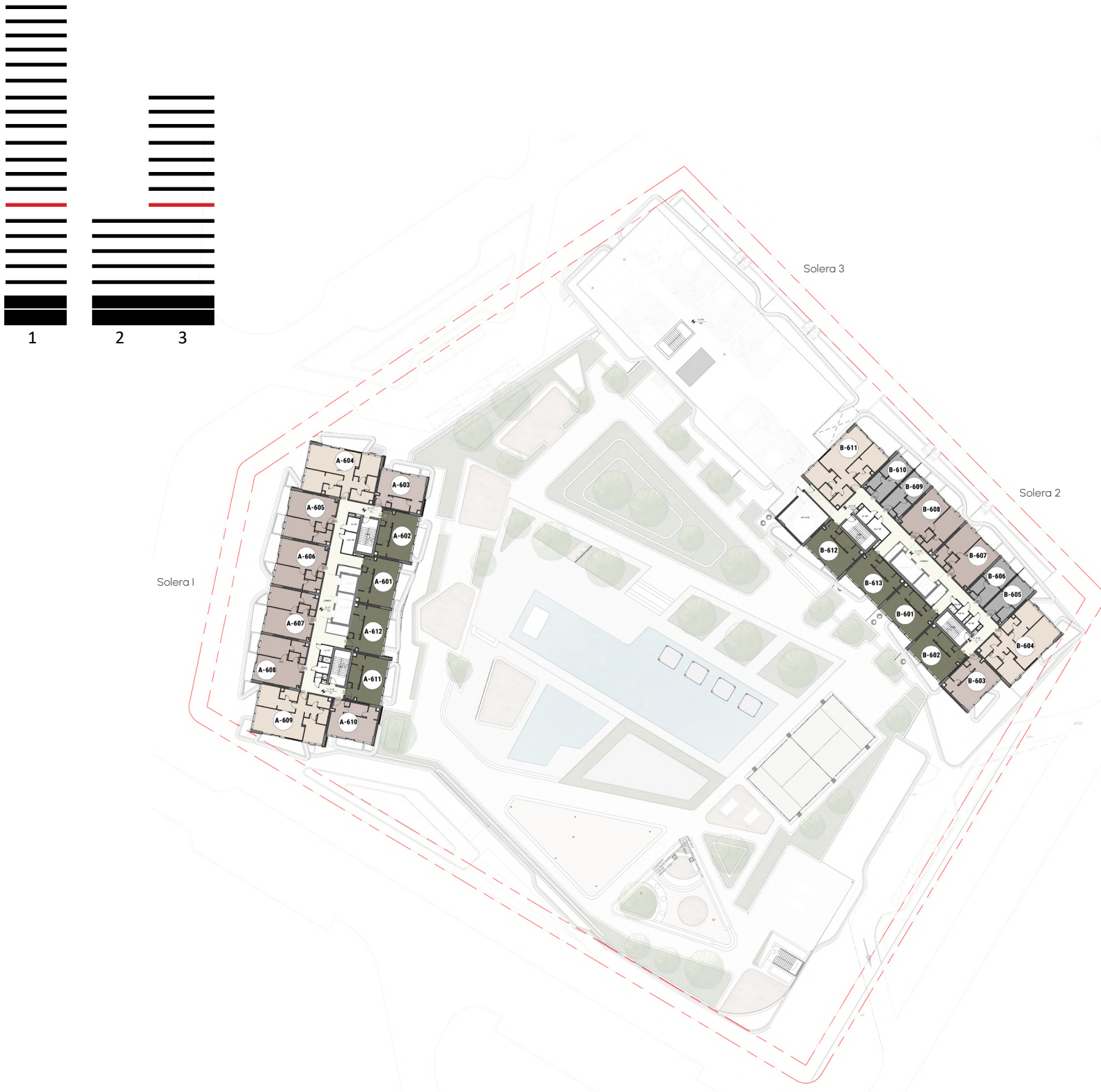
Third floor



- STUDIO
- 1 BEDROOM SUITES
- 1 BEDROOM PREMIUM
- 1 BEDROOM CORNER
- 2 BEDROOM SUITES
- 2 BEDROOM CORNER + MAID
- 3 BEDROOM PREMIUM
- PENTHOUSE

Floor plan numbers, square footage, and floor plans are approximate. Final dimensions, square footage and floor plans may vary or may be mirrored. Balcony area varies depending on location of unit on the floor.

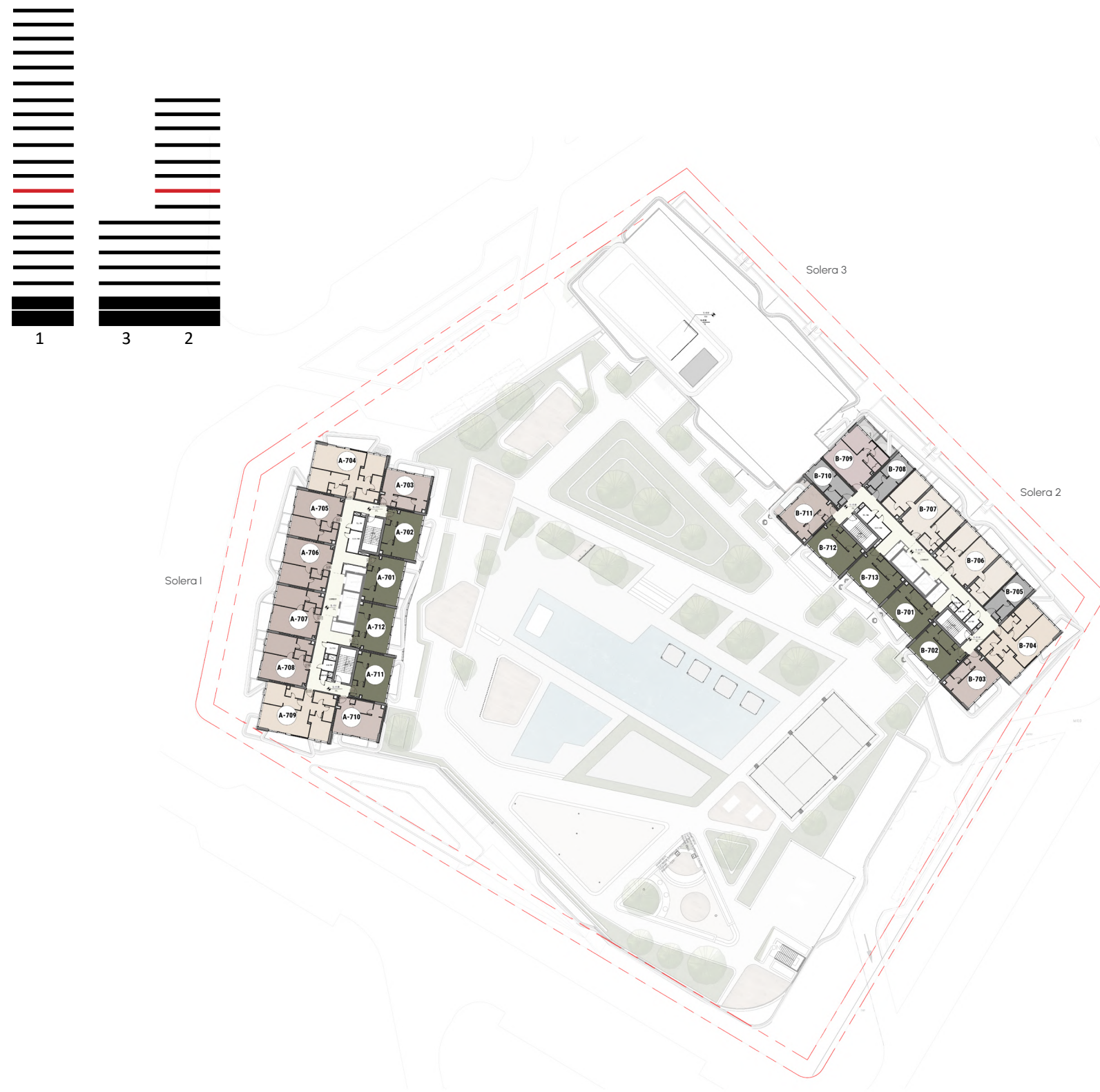
Sixth floor


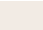








- STUDIO
- 1 BEDROOM SUITES
- 1 BEDROOM PREMIUM
- 1 BEDROOM CORNER
- 2 BEDROOM SUITES
- 2 BEDROOM CORNER + MAID
- 3 BEDROOM PREMIUM
- PENTHOUSE

Floor plan numbers, square footage, and floor plans are approximate. Final dimensions, square footage and floor plans may vary or may be mirrored. Balcony area varies depending on location of unit on the floor.

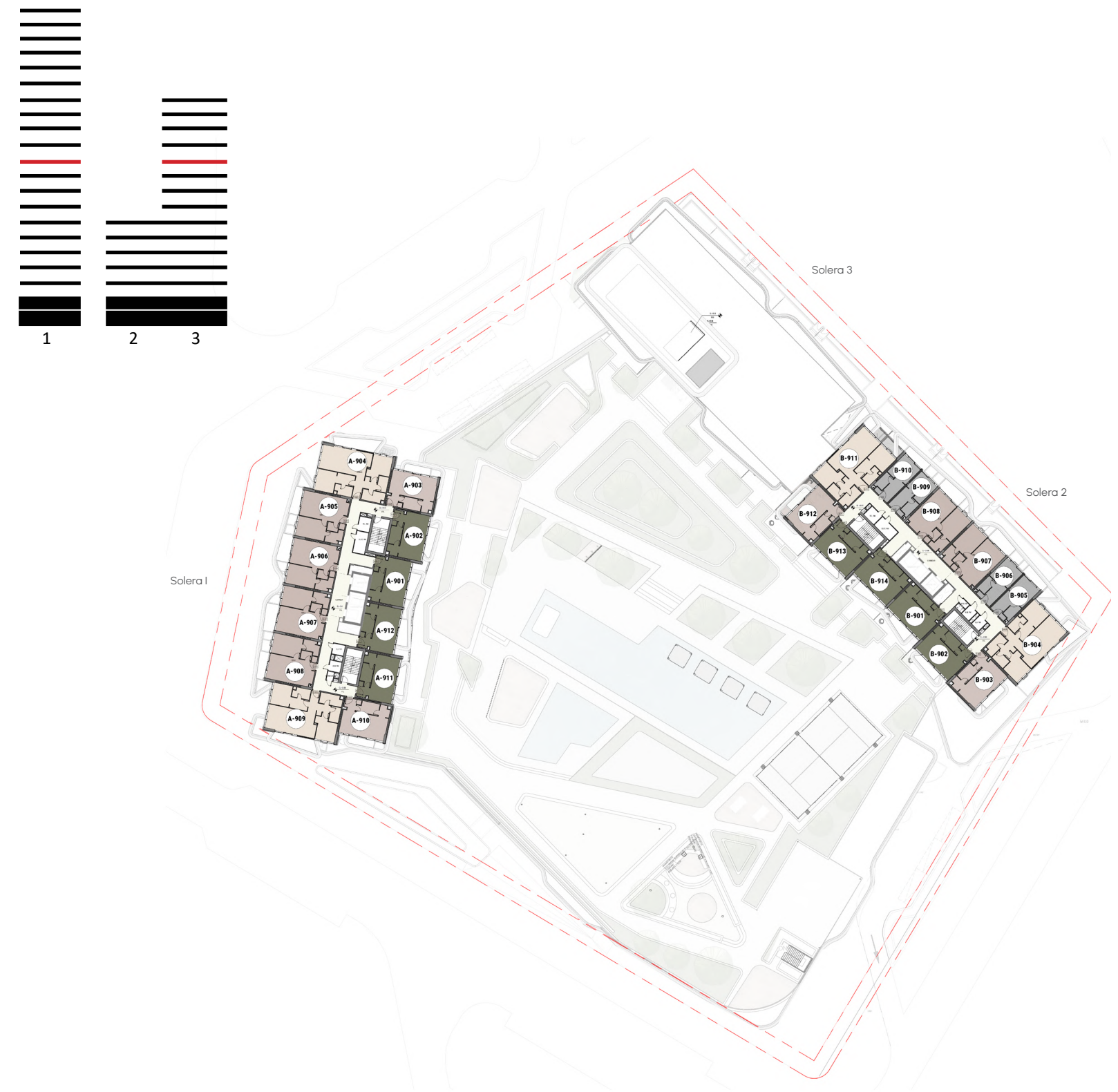
Seventh floor


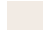



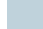




- | | |
|---|---|
|  STUDIO |  2 BEDROOM SUITES |
|  1 BEDROOM SUITES |  2 BEDROOM CORNER + MAID |
|  1 BEDROOM PREMIUM |  3 BEDROOM PREMIUM |
|  1 BEDROOM CORNER |  PENTHOUSE |

Floor plan numbers, square footage, and floor plans are approximate. Final dimensions, square footage and floor plans may vary or may be mirrored. Balcony area varies depending on location of unit on the floor.

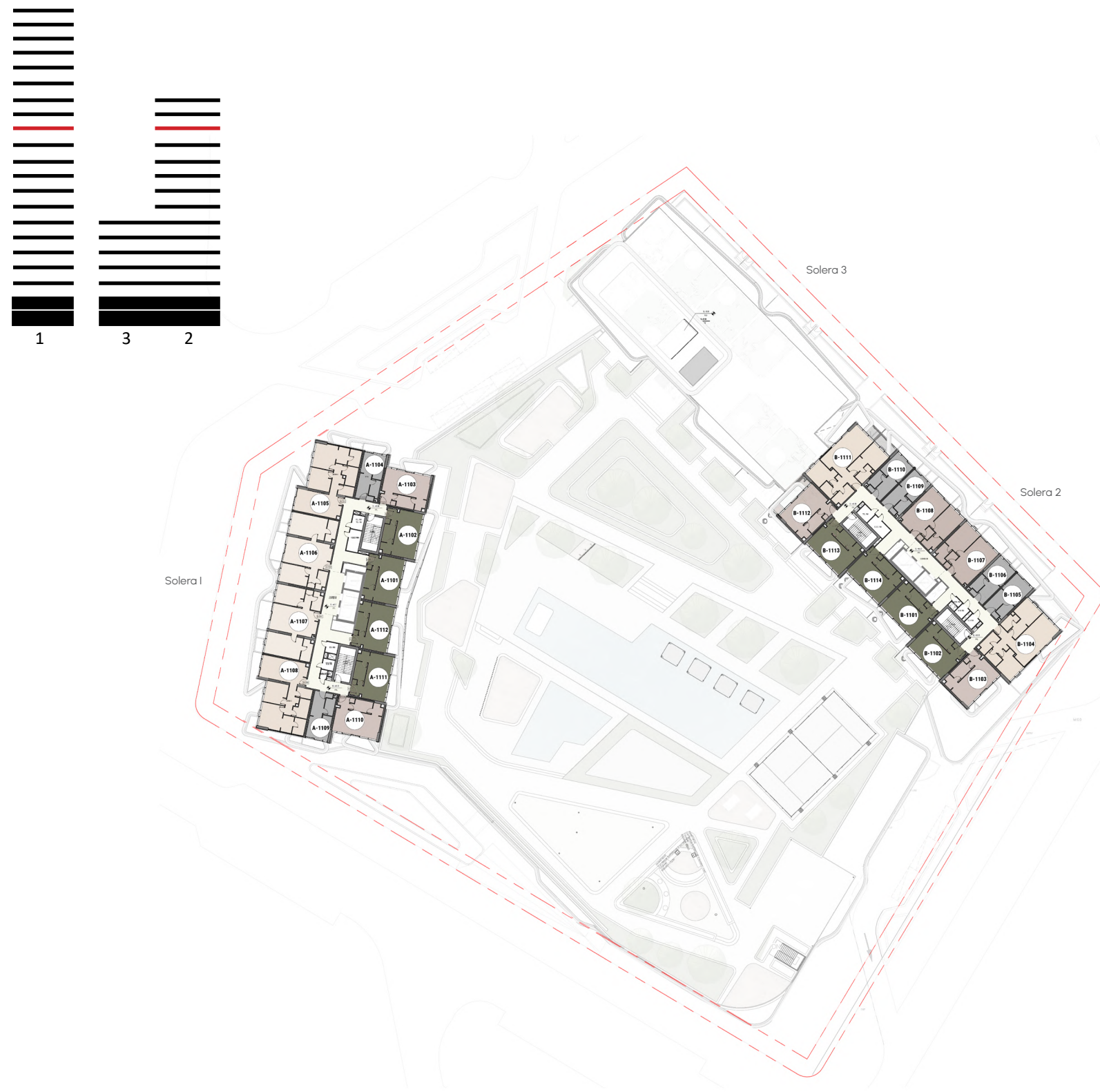
Nineth floor



- | | |
|---|---|
|  STUDIO |  2 BEDROOM SUITES |
|  1 BEDROOM SUITES |  2 BEDROOM CORNER + MAID |
|  1 BEDROOM PREMIUM |  3 BEDROOM PREMIUM |
|  1 BEDROOM CORNER |  PENTHOUSE |

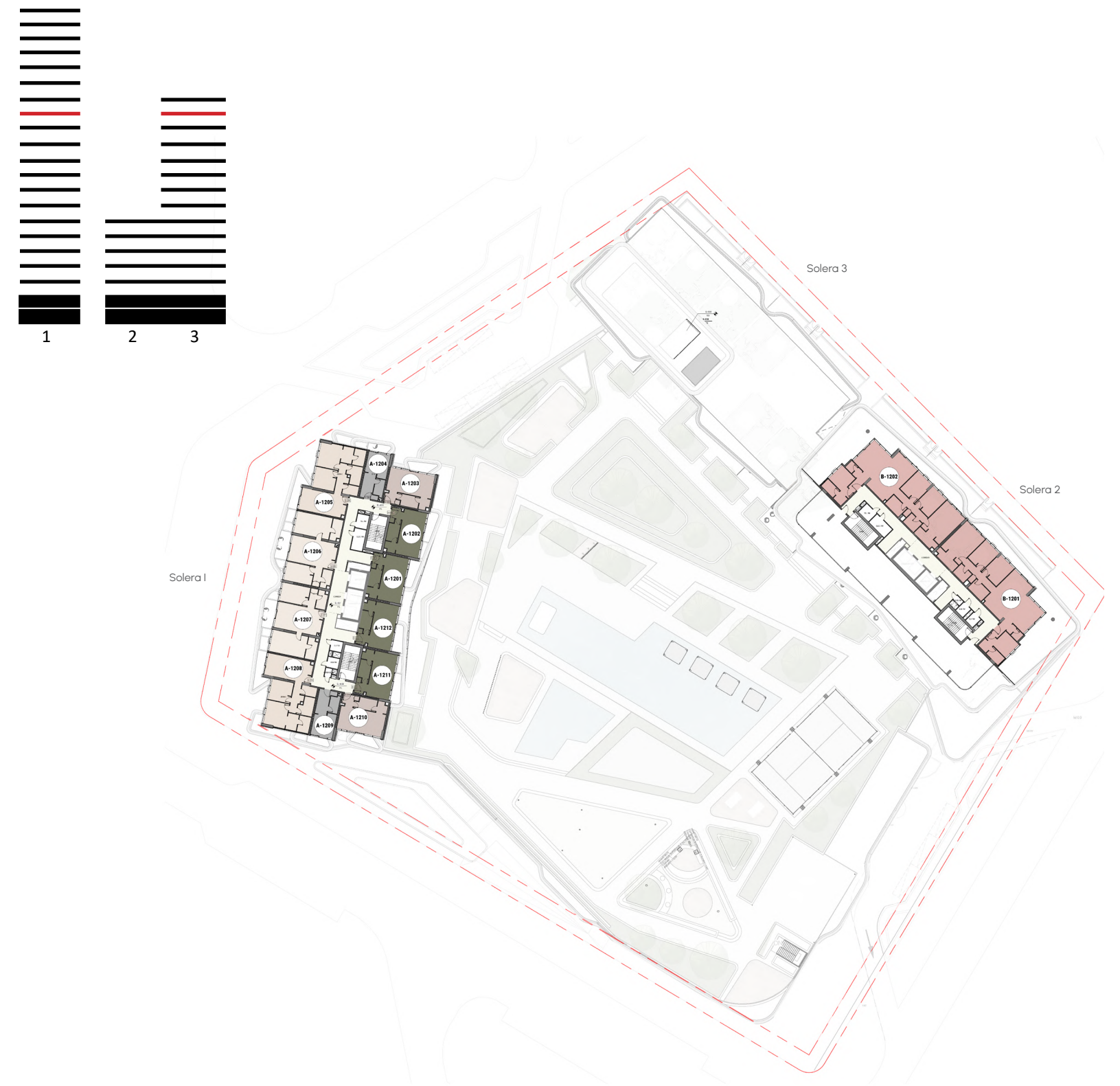
Floor plan numbers, square footage, and floor plans are approximate. Final dimensions, square footage and floor plans may vary or may be mirrored. Balcony area varies depending on location of unit on the floor.

Eleventh floor



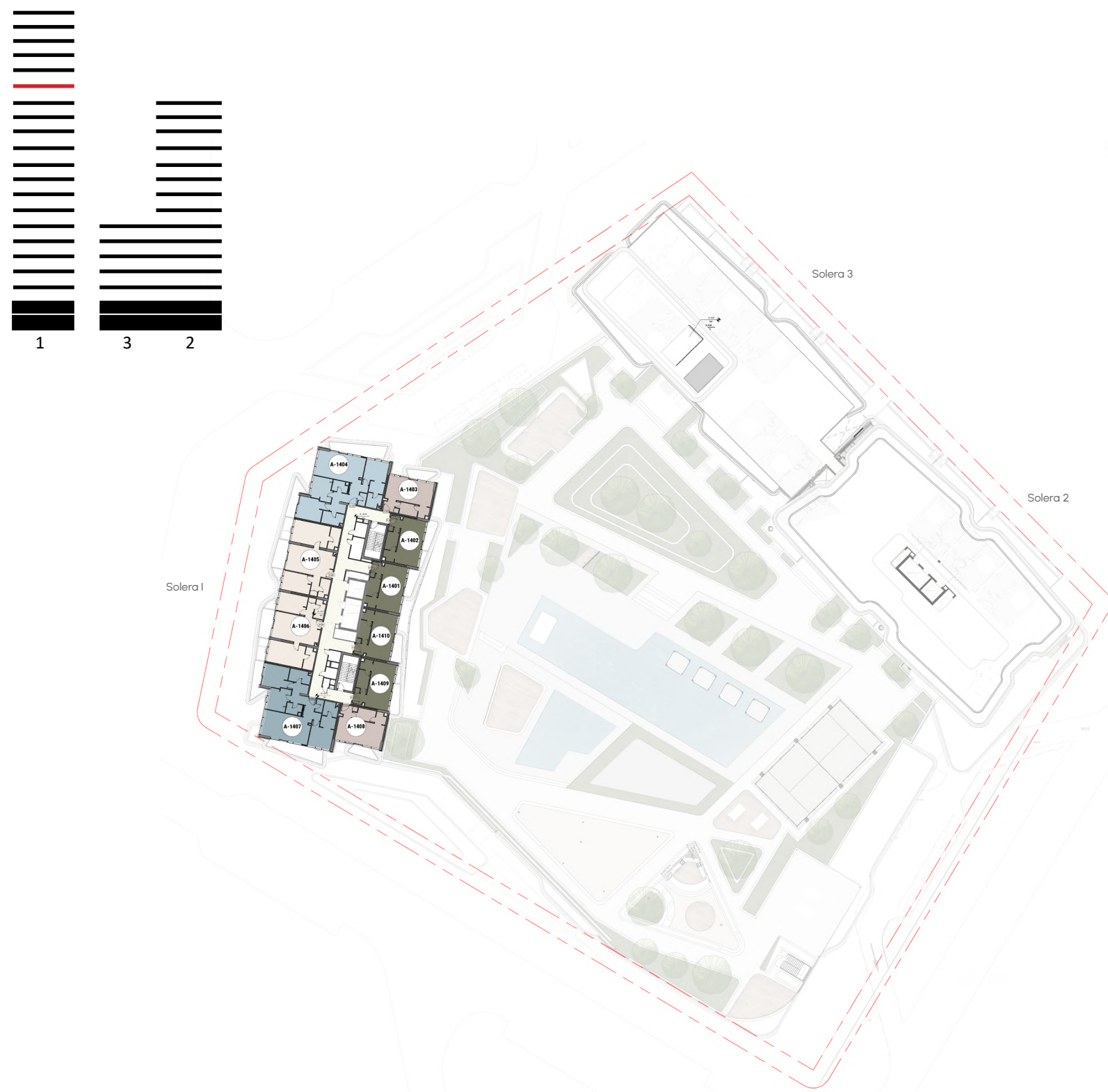
Floor plan numbers, square footage, and floor plans are approximate. Final dimensions, square footage and floor plans may vary or may be mirrored. Balcony area varies depending on location of unit on the floor.

Twelfth floor



Floor plan numbers, square footage, and floor plans are approximate. Final dimensions, square footage and floor plans may vary or may be mirrored. Balcony area varies depending on location of unit on the floor.

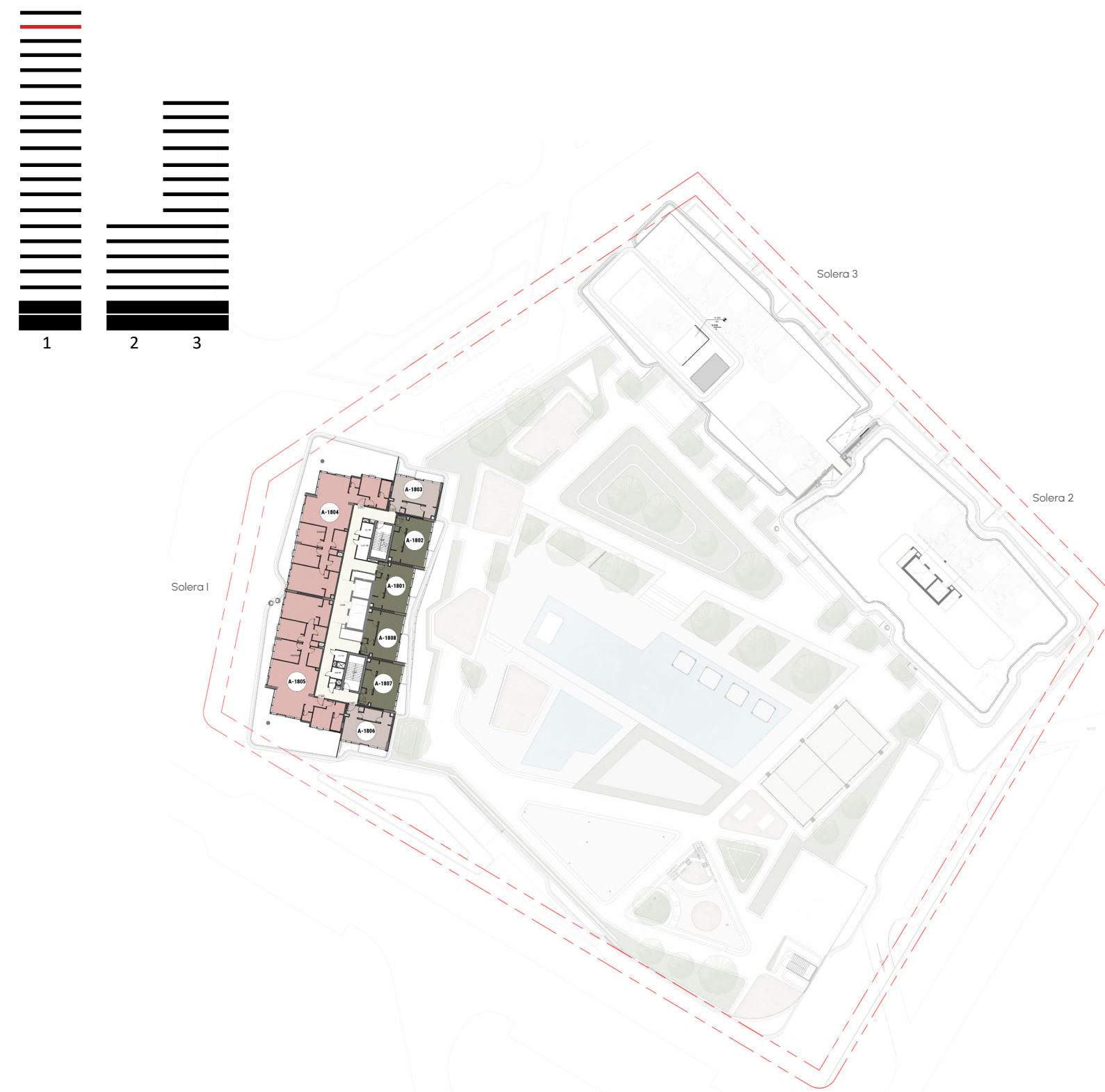
Fourteenth floor



- STUDIO
- 1 BEDROOM SUITES
- 1 BEDROOM PREMIUM
- 1 BEDROOM CORNER
- 2 BEDROOM SUITES
- 2 BEDROOM CORNER + MAID
- 3 BEDROOM PREMIUM
- PENTHOUSE

Floor plan numbers, square footage, and floor plans are approximate. Final dimensions, square footage and floor plans may vary or may be mirrored. Balcony area varies depending on location of unit on the floor.

Eighteenth floor



- STUDIO
- 1 BEDROOM SUITES
- 1 BEDROOM PREMIUM
- 1 BEDROOM CORNER
- 2 BEDROOM SUITES
- 2 BEDROOM CORNER + MAID
- 3 BEDROOM PREMIUM
- PENTHOUSE

Floor plan numbers, square footage, and floor plans are approximate. Final dimensions, square footage and floor plans may vary or may be mirrored. Balcony area varies depending on location of unit on the floor.



S T I L L N E S S


With a Pulse Beneath



NATURE IN BALANCE

Home to flamingos and more than 60 bird species, Mina's natural world unfolds quietly alongside Solera. A delicate backdrop of mangroves, mountains, and sea - always felt, never loud.





2 0 Y E A R S

of RAK Properties

Since 2005, RAK Properties has been at the forefront of real estate development in Ras Al Khaimah, contributing significantly to the Emirate's growth and appeal. It's portfolio includes diverse residential, commercial and hospitality projects, reflecting a strong commitment to quality, innovation and sustainability.





Pst.

Call **600 548 200**

www.propertyshopinvestment.com