



# NOBU

RESIDENCES  
ABU DHABI

PENTHOUSE  
EPITOME OF LUXURY LIVING



Nobu Residences Abu Dhabi is a peaceful haven on Saadiyat Island. Here, beside pristine white sands, emerald sea and an array of the world's most revered artistic institutions, an exclusive residential collection is to be found; one that features one-to-three-bedroom residences, two-bedroom lofts, sky villas and penthouses. Presented with a curated choice of breathtaking services and amenities, Nobu Residences weaves together harmonious ideals of hospitality, ceremony and design. Chef Nobu's culinary art and soul are eloquently expressed in a signature residence kitchen bringing to life a masterful balance of traditional craft, contemporary design, and curated details.







WHERE DEEP CONNECTIONS ARE FORGED

To Nobu, hospitality is a privilege. To welcome guests as friends and share memorable experiences is an honour deeply rooted in the brand's history and culture. Nobu Residences Abu Dhabi is the brand's first arrival in a region that shares a similar belief in forging connections: a convergence of emotions, feelings, spirit and soul.



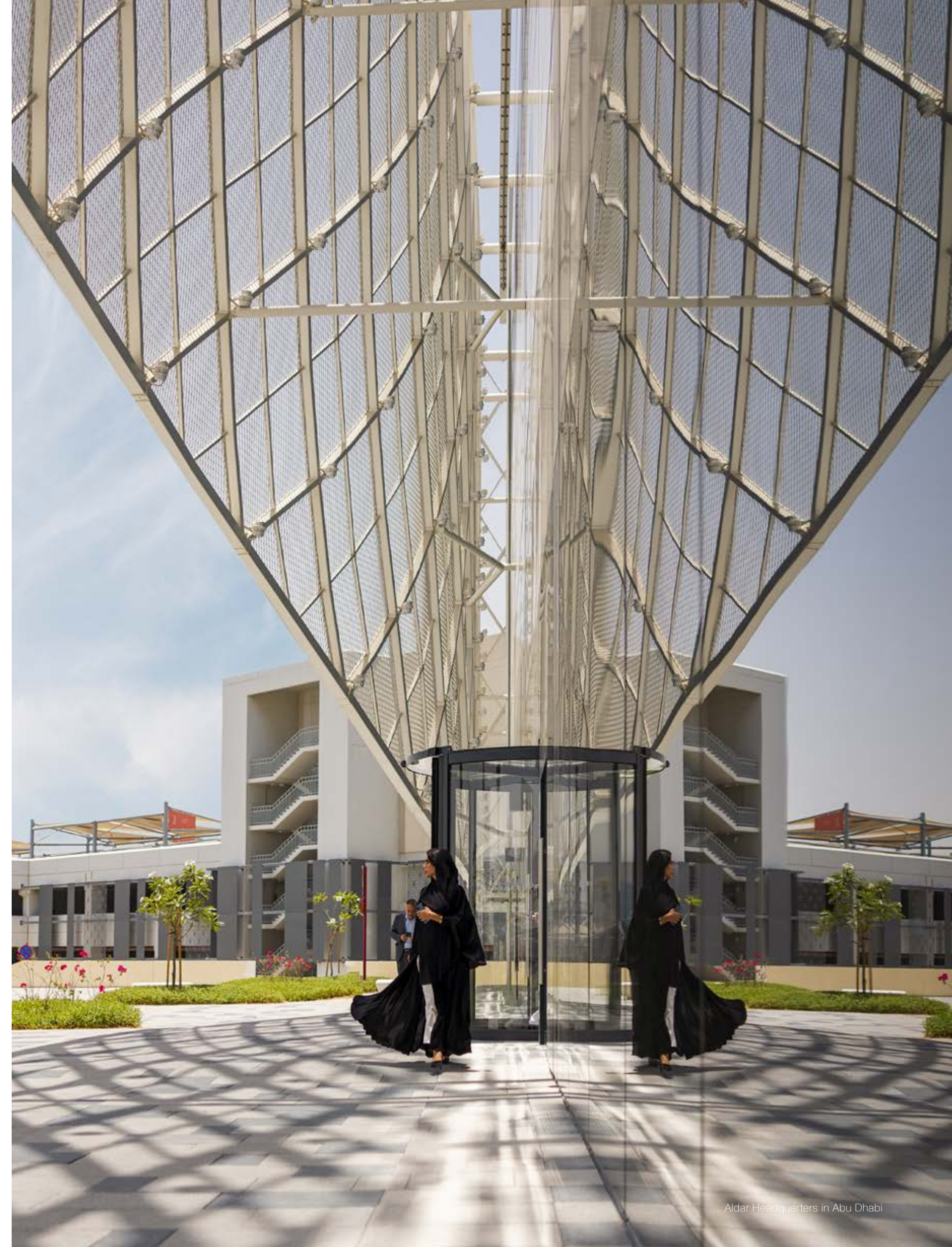


## A MASTERFUL BLEND OF TRADITION AND INNOVATION

Hospitality is the founding principle of every Nobu restaurant, hotel and residence. It begins with a dedication to craft, what the Japanese call omotenashi, and a commitment to hospitality. At Nobu Abu Dhabi, this reverence for tradition and custom is balanced by an embrace of the unexpected, an approach that reflects the drive and vision of Chef Nobu himself.

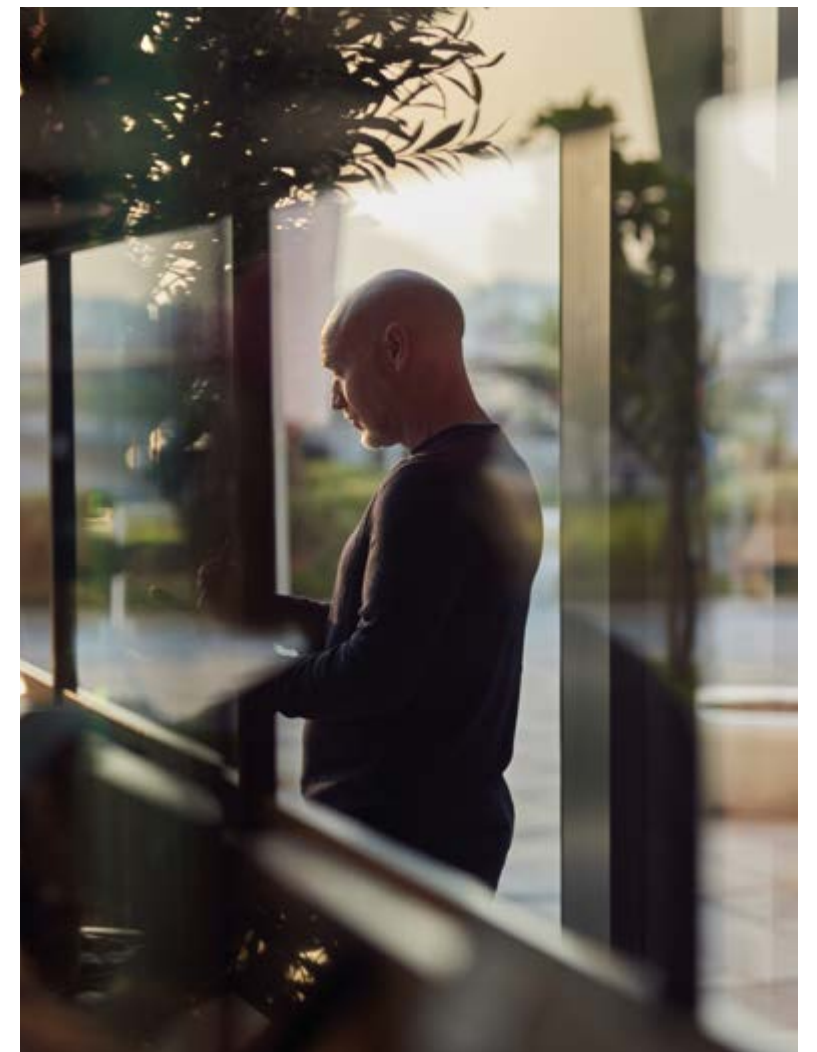
## DYNAMIC NEW DEVELOPMENTS FROM ALDAR

As a creator of world-class experiences across the United Arab Emirates, Aldar is one of the region's most successful development and management companies. Aldar places people at the heart of every one of its projects, creating communities where people can live, work and relax in beautiful surroundings. Working with many of the world's leading cultural institutions and hospitality brands, Aldar is helping shape a future full of opportunity.









Michael Magill, Principal creative architect at RSP Architects

## A SHARED VISION

The spirit of co-operation is woven throughout Nobu Residences Abu Dhabi; a shared vision between Aldar, Nobu and world-class architects and interior designers. This is a team that understands the beautiful opportunity that this location presents, working together from conception to realisation to craft luxurious and serene residences.





Chef Nobu Matsuhisa and Séverine Tatangelo, Founder and Principal at Studio PCH

## A NATURAL EXPRESSION OF BEAUTY AND VITALITY

A dance of light and shadow, an echo of sea and sand is the inspiration behind the elegant design concept of Nobu Residences Abu Dhabi. These exquisitely curated residences bring together influences from traditional Japanese and Emirati architecture, adding a contemporary design finesse and heightened sense of luxury to create a true sanctuary for the senses.

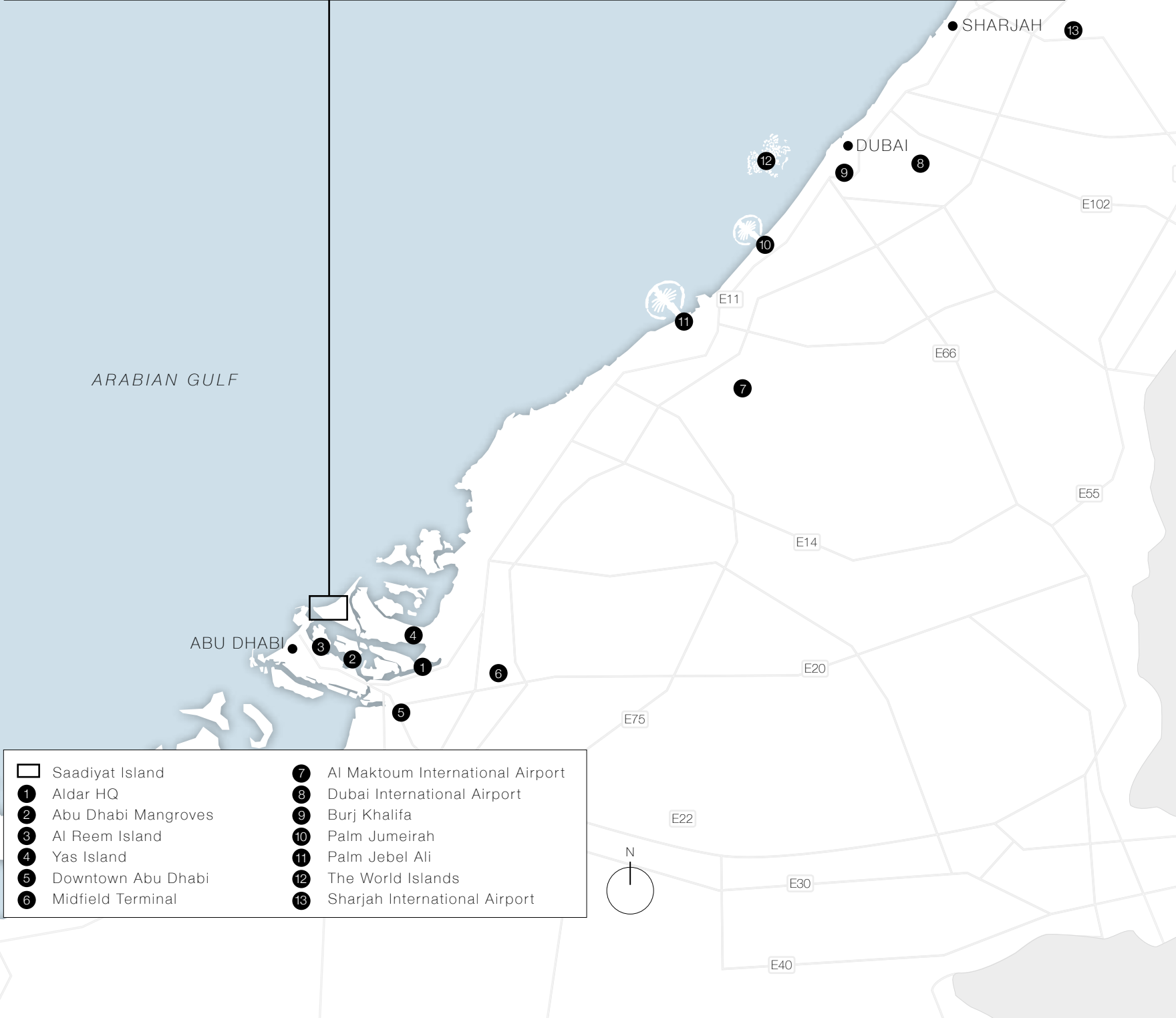
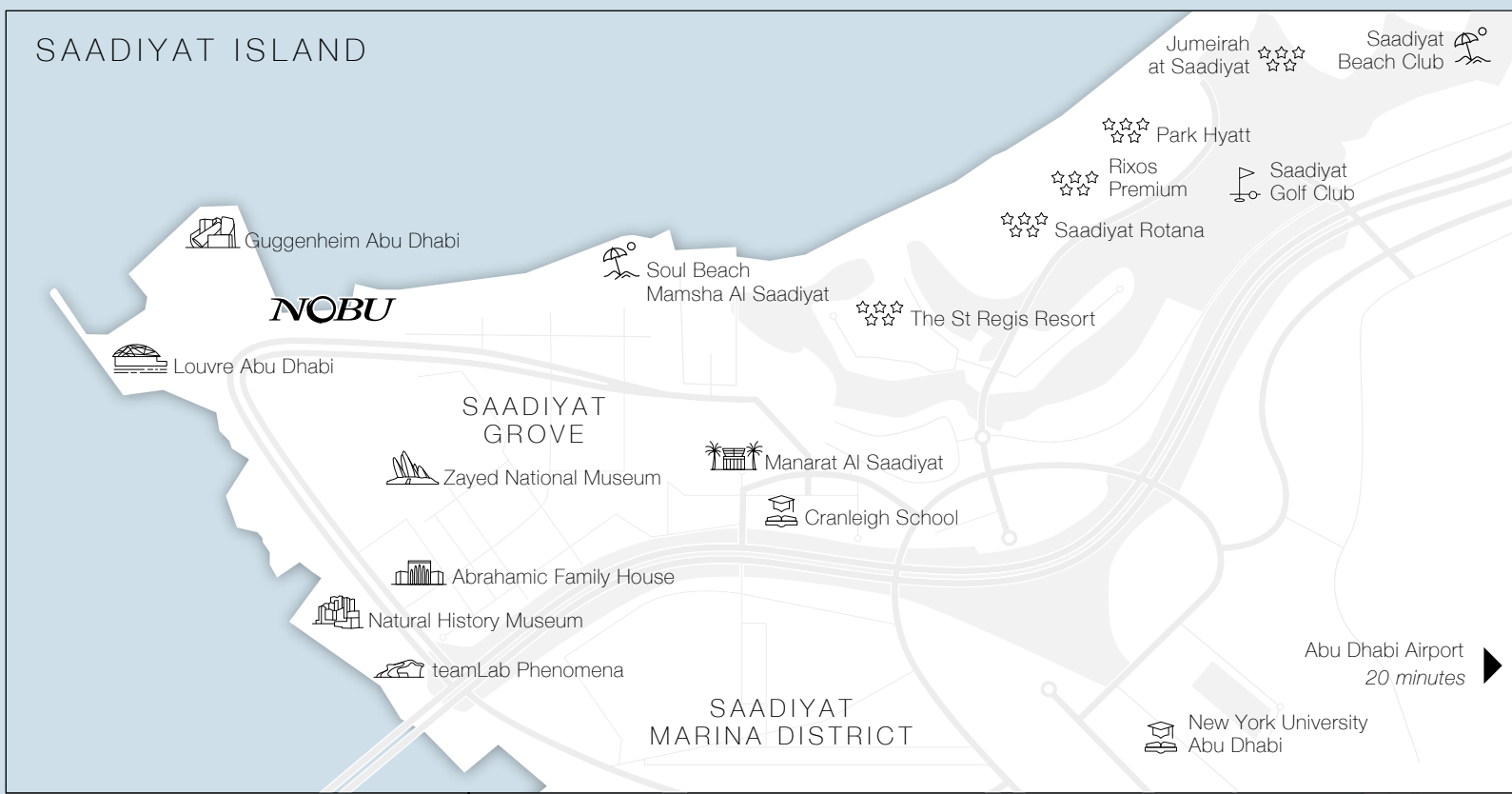




## A CITY OF POSSIBILITIES

Abu Dhabi is the capital of the UAE. It's the buzz of the city. It's the calm of the sea. And the ancient wonder of the desert. It's a land where nature, history and culture come together in one dazzling location. Travellers have long been drawn by its beauty and charm and that sense of adventure is reflected perfectly in Abu Dhabi's sparkling new attractions.





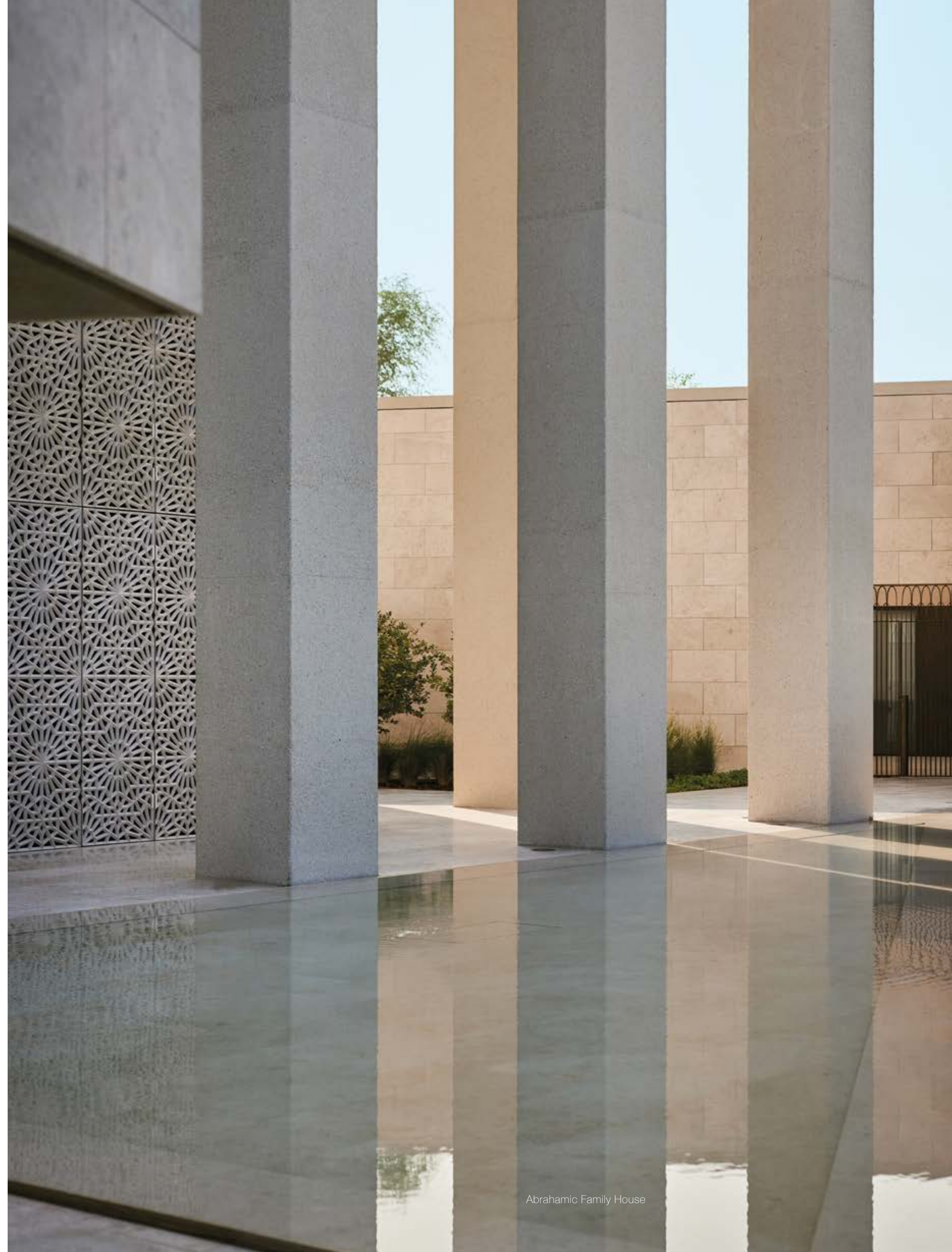
- |                       |                                    |
|-----------------------|------------------------------------|
| ☐ Saadiyat Island     | 7 Al Maktoum International Airport |
| 1 Aldar HQ            | 8 Dubai International Airport      |
| 2 Abu Dhabi Mangroves | 9 Burj Khalifa                     |
| 3 Al Reem Island      | 10 Palm Jumeirah                   |
| 4 Yas Island          | 11 Palm Jebel Ali                  |
| 5 Downtown Abu Dhabi  | 12 The World Islands               |
| 6 Midfield Terminal   | 13 Sharjah International Airport   |

## SAADIYAT ISLAND: WHERE NATURE AND CULTURE MEET

Saadiyat Island has a natural beauty matched only by its visionary ambition. It's home to an array of the world's most prestigious cultural institutions including the Louvre Abu Dhabi, the Guggenheim Abu Dhabi, the Zayed National Museum, Abrahamic Family House, the Natural History Museum and teamLAB Phenomena.

The local flora and fauna on Saadiyat Island offers an equally colorful and vivid spectacle. The wildlife includes birds such as lapwings and herons, along with gazelles, dolphins and turtles, many of whom inhabit the extraordinary mangroves that are such an important protected feature of the UAE.









SAADIYAT GROVE AND MAMSHA AL SAADIYAT:  
SHOPPING AND DINING OVERLOOKING THE SEA

This vibrant beachside retail and hospitality destination is located just moments from the Nobu Residences. Here, on an elegant waterfront promenade, sit more than 60,000 sqm of world-class shopping and hospitality including bars, restaurants, and fashion and homeware boutiques. It's a delightful place to stroll and enjoy the far-reaching sea views, meet friends and family for morning coffee, light lunch or evening meal in one of Abu Dhabi's most vibrant restaurants.





## FIND SANCTUARY, CELEBRATE LIFE

This is where memories are cherished and moments savoured. In quiet, beautiful surroundings, residents can be still, centred in the here and now, knowing all that they need is taken care of. In times of celebration, residents can come together, be it in uniquely designed spaces or in the privacy of their own home, and share in the wonder of life in one of the most extraordinary places on Earth.

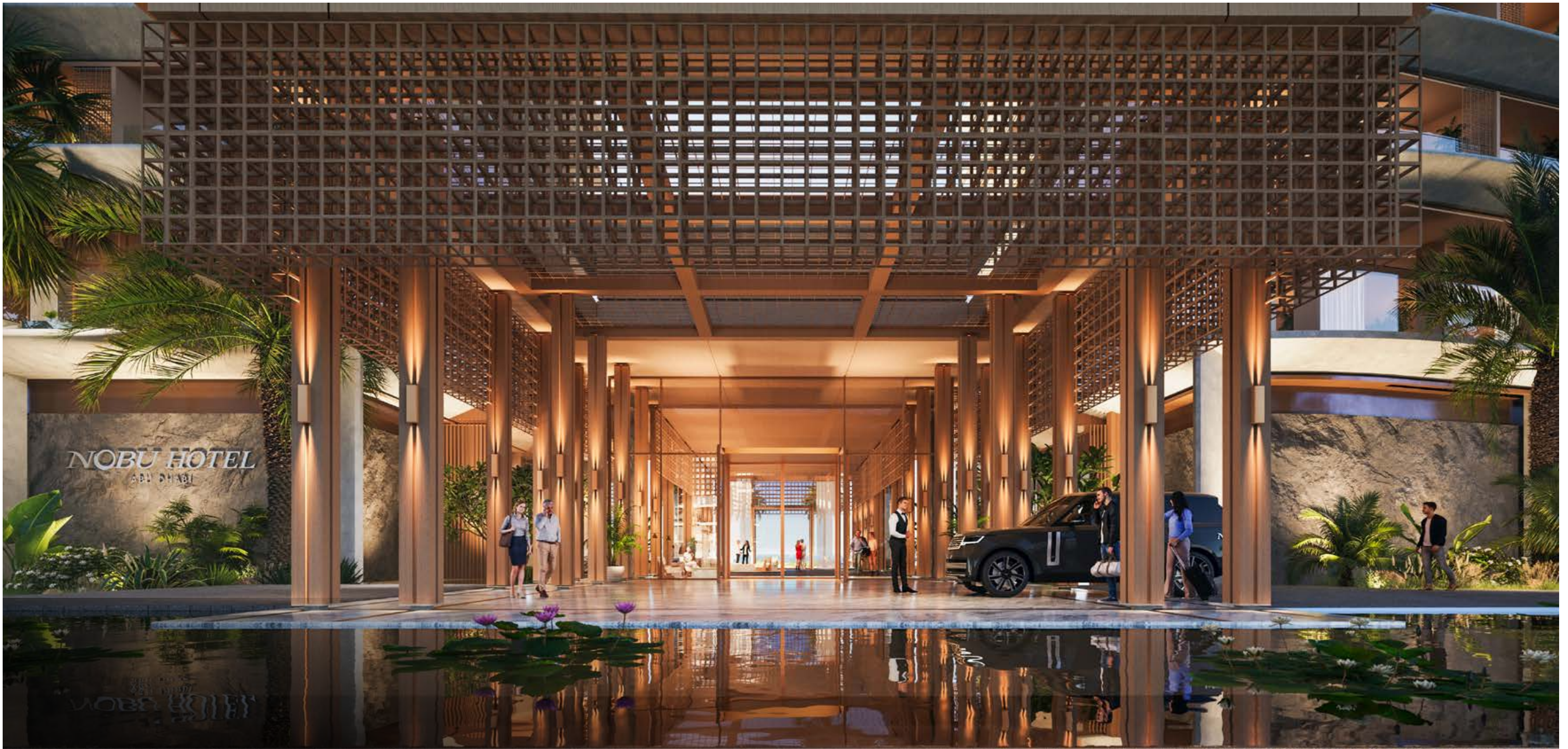
A man in a white chef's uniform is shown in profile, looking out of a window. The window has vertical blinds that are partially open, allowing warm, golden light from the city at night to stream in. The man's expression is thoughtful and serene. The background is a dark, blurred cityscape with lights reflecting on the window panes.

## HONOURING THE NOBU LEGACY

In keeping with the fluid elegance of Nobu's design style, every aspect of these penthouses has been thoughtfully considered to create a living experience that is both luxurious and harmonious.

*INTRODUCING PENTHOUSES  
EPITOME OF LUXURY LIVING*





## ICONIC ADDRESS, UNRIVALED LIFESTYLE

Nestled in the heart of the vibrant Nobu Residences building, with the prestigious Nobu Hotel as your neighbor, these penthouses offer a living experience that is as exclusive as it is exhilarating. Immerse yourself in the luxury of à la carte services and world-class amenities, mirroring the world-renowned standards of the Nobu brand.



## PERSONALISED LUXURY

Experience the pinnacle of personalized luxury with our extensive customization options for finishes. Immerse yourself in the timeless allure of marble with the freedom to adorn your space with marble walls, countertops, and more.



Penthouse living room



Residences bedroom

## SEASIDE DREAM

Drift into serenity amidst the tranquil embrace of sea views from the opulent bedrooms in our Nobu Residences Abu Dhabi Penthouses

### ALL BEDROOMS

---

High-end engineered wooden flooring for bedrooms

---

### MASTER BEDROOM

---

Recessed LED profile

---

Pull-out trouser hanger

---

Electronic safe

---

Jewellery drawer

---

### WARDROBES

---

High-end built-in/walk-in wardrobes manufactured by luxury Italian brands

---

Designer metal/leather handles with removable hanger holder

---

Eucalyptus wood door profiles

---

Externally finished in vanilla and green linen fabric

---





Penthouse bedroom



Residences kitchen

## CHEF'S KITCHEN

Designed in collaboration with Chef Nobu, the signature kitchen lies at the heart of every residence. His culinary art and soul is beautifully expressed through a perfect balance of traditional craft, contemporary appliances and generous cooking and entertaining spaces. Sleek contemporary Japanese wooden slats grace Italian-designed cabinets with leather and steel handles.

## KITCHEN FINISHES

---

Chef's kitchen designed in collaboration with Chef Nobu and inspired by contemporary Arabic (Emirati) and modern Japanese architecture

---

High-end Italian brands specialised for kitchen appliances:

- Panelled refrigerator and freezer
  - Hoodless oven
  - Built-in automated dishwasher
- 

Custom-made designer cabinets with metal/leather handles

---

Warm LED-lit glass cabinet

---

Sleek, user-friendly extendable kitchen sink mixer

---

Internal storage organisation:

- Under sink bin organisation
  - Magic corner storage
  - Linear cabinet storage tray built-in
- 

Kitchen cabinets curated by Italian manufacturers with Japanese-style wooden slats

---

Built-in signature features:

- High-end knife rack
  - High-end chopping board/tray
- 

Countertop in quartzite stone or marble

---



## GOURMET MASTERPIECES AWAIT

Step into a realm where Chef Nobu's culinary genius shapes every corner. These penthouse kitchens are a testament to his vision, blending seamless functionality with a breathtaking aesthetic that elevates the cooking experience to an art form.

*Nobu*



Penthouse living room

## IMMERSED IN THE MOMENT

Traditional bathing rituals are observed in the residence bathrooms, with designs inspired by Arabic hammams and Japanese onsens (mineral-rich hot springs). Handcrafted Japanese bathtubs with rich high-end teak wood elements is the centrepiece of the primary bathrooms accompanied by powerful rain showers and tactile quartzite tiling. These are spaces that can be both invigorating, for morning rituals, and indulgent, for long evening soaks.

## BATHROOM FINISHES

---

Luxury traditional Japanese curated bathtubs with wooden teak elements or luxury handcrafted marble bathtubs

---

High-efficiency top-of-the-line American sanitaryware

---

Rain shower experience in master bathrooms

---

Secondary bathrooms equipped with multifunction hand showers (3-spray)

---

Anti-slip safety tiles in the showers

---

All finishes in warm tones with rich teak wood and quartzite stone and marble elements

---





## BATHE IN SERENITY

Elevating the bathing experience to unparalleled levels of luxury, our penthouses boast exquisite bathtub options sourced from the finest materials around the globe. Choose between the warmth of teak wood handcrafted in Japan or the timeless elegance of marble baths painstakingly crafted in Italy. Each option promises indulgence and relaxation, transforming your bathing ritual into a lavish retreat.



## AN OASIS IN THE SKY

Each penthouse boasts its own private pool, set against the backdrop of breathtaking views. From the glistening sea to the majestic Guggenheim Museum and the serene Grove Boulevard, your terrace becomes a sanctuary of tranquility and beauty. The addition of a plunge pool offers a refreshing escape, perfect for invigorating morning dips or relaxing evening soaks.

## SEAMLESS ACCESSIBILITY

Your journey to this pinnacle of luxury begins the moment you enter the dedicated elevator from the car park. Ascend directly to your exclusive world, where privacy and convenience blend effortlessly.





## WELLNESS, PERSONALISED

Elevate your wellness journey in your own private treatment room. Tailored for relaxation and rejuvenation, this space is your personal retreat for spa-like indulgences, away from the world's hustle.





## BESPOKE FITNESS JOURNEY

Envision your very own fitness sanctuary; a space that molds seamlessly toward your personal ambitions. The private gym and fitness studio within each penthouse serves as a canvas for your personal health and fitness aspirations.

## AESTHETIC MASTERY: LIGHT AND DARK INTERIOR PALETTES

Nobu penthouses offer a choice of light or dark interior schemes, each providing a distinct ambiance. The light scheme exudes openness and serenity, while the dark scheme offers a sense of depth and sophistication. Both are meticulously finished to embody the essence of modern luxury, ensuring that your home is a reflection of your personal style.

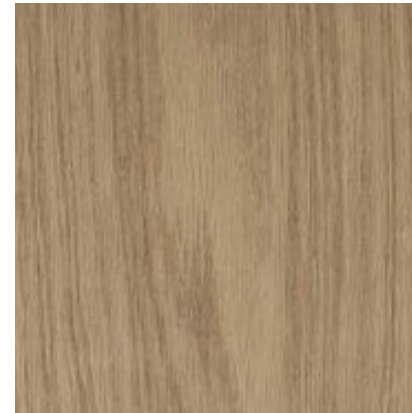


NOBU ABU DHABI RESIDENCES  
PENTHOUSE AND SKY VILLA  
LIGHT SCHEME



LIVING AREA VIEW

INTERNAL & EXTERNAL DOORS



SOLID / VENEER OAK WOOD

BEDROOM FLOOR



ENGINEERED OAK WOOD (8"MIN X 10')  
PREFERRED OPTION

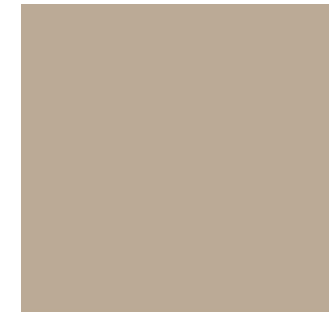


ENGINEERED OAK WOOD (8"MIN X 10')  
ALTERNATIVE OPTION

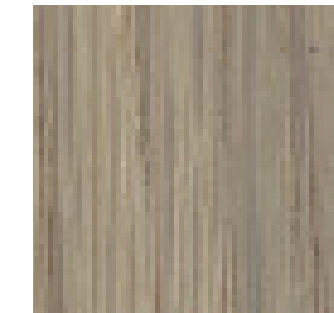
KITCHEN CABINETRY



MATT LACQUER  
PREFERRED OPTION

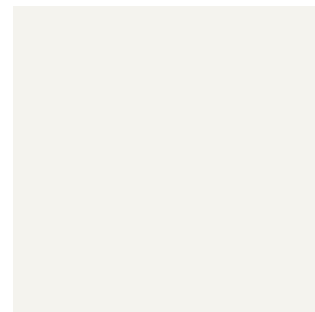


MATT LACQUER  
ALTERNATIVE OPTION

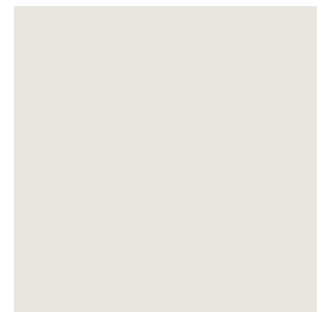


OAK WOOD VENEER

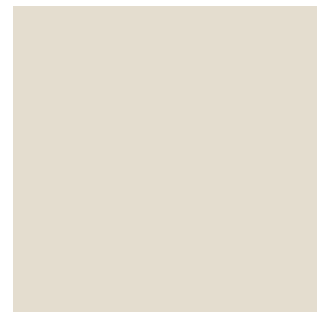
WALL & CEILING



PLASTER / PAINT  
PREFERRED OPTION



PLASTER / PAINT  
ALTERNATIVE OPTION 1



PLASTER / PAINT  
ALTERNATIVE OPTION 2

ACCENT WALL (MASTER BEDROOM)



TEXTURED WALLPAPER  
PREFERRED OPTION



TEXTURED WALLPAPER  
ALTERNATIVE OPTION 1



TEXTURED WALLPAPER  
ALTERNATIVE OPTION 2

WALL, COUNTERTOP, BACKSPASH, SINK (KITCHEN, MASTER BATHROOM)



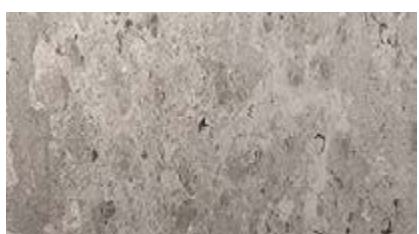
TRAVERTINE STONE  
PREFERRED OPTION  
FOR MASTER BATHROOM



MARBLE STONE  
PREFERRED OPTION  
FOR KITCHEN COUNTERTOP



MARBLE STONE  
ALTERNATIVE OPTION 1



MARBLE STONE  
ALTERNATIVE OPTION 2

WALL, FLOOR, COUNTERTOP (LIVING AREA, SECONDARY BATHROOMS)



PORCELAIN TILES  
PREFERRED OPTION



PORCELAIN TILES  
ALTERNATIVE OPTION 1



PORCELAIN TILES  
ALTERNATIVE OPTION 2

BATHTUB



TRAVERTINE STONE  
OPTION 1



HINOKI WOOD  
OPTION 2

SHOWER



CLEAR GLASS



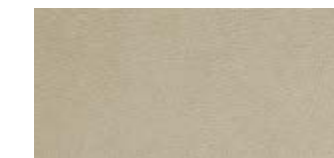
FROSTED GLASS

SANITARY WARE  
FINOX BRUSHED NICKEL



WARDROBE PROFILE  
BRONZE METAL

WARDROBE EXTERNAL FINISH (MASTER BEDROOM)



ECO SKIN - HEMP  
PREFERRED OPTION



STOPSOL SILVER GLASS  
ALTERNATIVE OPTION

WARDROBE EXTERNAL FINISH (SECONDARY BEDROOM)



MOSS GREEN LINEN FABRIC  
PREFERRED OPTION



VANILLA LINEN FABRIC  
ALTERNATIVE OPTION



NOBU ABU DHABI RESIDENCES  
PENTHOUSE AND SKY VILLA  
DARK SCHEME



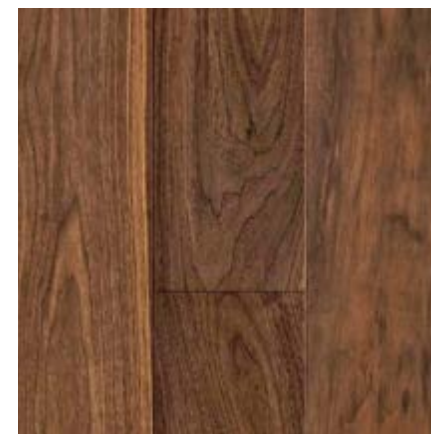
G AREA VIEW

INTERNAL & EXTERNAL DOORS



SOLID / VENEER WALNUT WOOD

BEDROOM FLOOR



ENGINEERED WALNUT (8"MIN X 10")  
PREFERRED OPTION

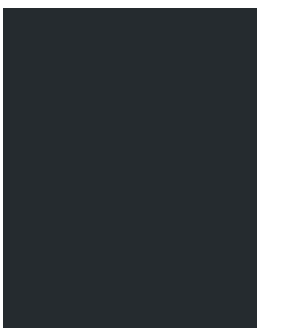


ENGINEERED OAK WOOD (8"MIN X 10")  
ALTERNATIVE OPTION

KITCHEN CABINETRY



MATT LACQUER  
PREFERRED OPTION

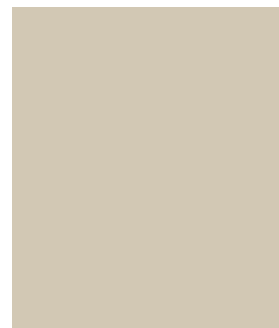


MATT LACQUER  
ALTERNATIVE OPTION

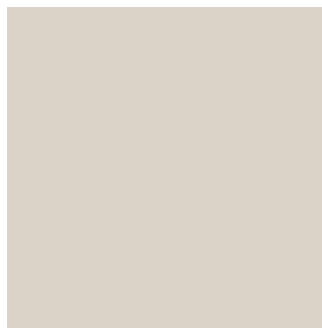


OAK WOOD VENEER

WALL & CEILING



PLASTER / PAINT  
PREFERRED OPTION



PLASTER / PAINT  
ALTERNATIVE OPTION 1



PLASTER / PAINT  
ALTERNATIVE OPTION 2

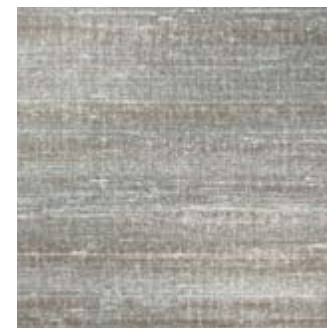
ACCENT WALL (MASTER BEDROOM)



TEXTURED WALLPAPER  
PREFERRED OPTION



TEXTURED WALLPAPER  
ALTERNATIVE OPTION 1



TEXTURED WALLPAPER  
ALTERNATIVE OPTION 2



SANITARY WARE  
BLACK METAL BRUSHED



WARDROBE PROFILE  
PEWTER METAL

WALL, FLOOR, COUNTERTOP, BACKSPLASH, SINK (KITCHEN, MASTER BATHROOM)



TRAVERTINE STONE  
PREFERRED OPTION  
MASTER BATHROOM



MARBLE STONE  
PREFERRED OPTION  
FOR KITCHEN COUNTERTOP



TRAVERTINE STONE  
ALTERNATIVE OPTION 1



MARBLE STONE  
ALTERNATIVE OPTION 2

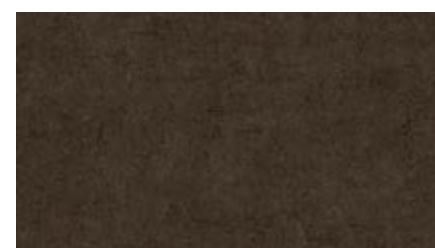
WALL, FLOOR, COUNTERTOP (LIVING AREA, SECONDARY BATHROOMS)



PORCELAIN TILES  
PREFERRED OPTION



PORCELAIN TILES  
ALTERNATIVE OPTION 1



PORCELAIN TILES  
ALTERNATIVE OPTION 2

BATHTUB

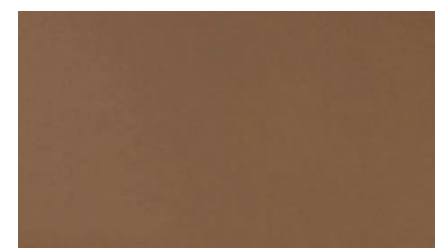


TEAK WOOD  
OPTION 1

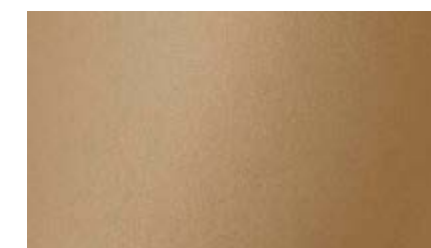


TRAVERTINE STONE  
OPTION 2

SHOWER



BRONZE GLASS



FROSTED BRONZE GLASS

WARDROBE EXTERNAL FINISH (MASTER BEDROOM)

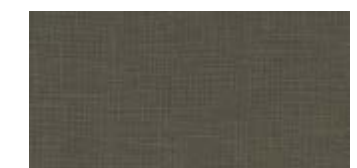


ECO SKIN - MINK  
PREFERRED OPTION



STOPSOL GLASS  
ALTERNATIVE OPTION

WARDROBE EXTERNAL FINISH (SECONDARY BEDROOM)



OLIVE GREEN LINEN FABRIC  
PREFERRED OPTION



BARK LINEN FABRIC  
ALTERNATIVE OPTION



FLOOR PLANS  
SKY Villa - A & B

TOTAL AREA 1,110 sqm



1ST FLOOR



2ND FLOOR

Disclaimer: This plan is reproduced for illustrative purposes as an example of a typical layout and Aldar makes no representation of warranty in relation to any of the information shown.

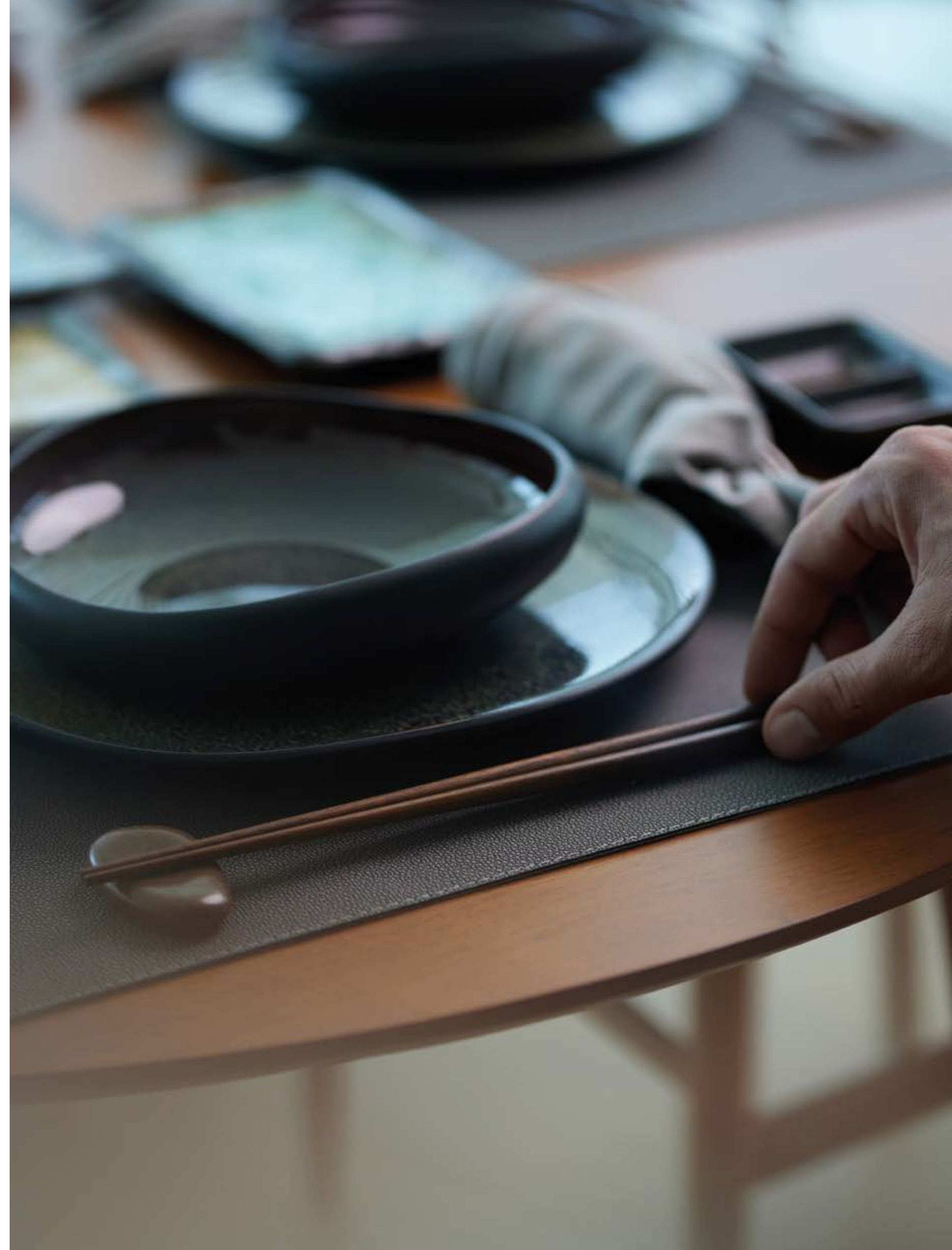


FLOOR PLANS  
PENTHOUSE - A & B

TOTAL AREA 1,377 sqm



Disclaimer: This plan is reproduced for illustrative purposes as an example of a typical layout and Aldar makes no representation of warranty in relation to any of the information shown.





## LIFE ENRICHING AMENITIES IN A BEAUTIFUL SETTING

This is more than a distinguished home, it's a life-enhancing experience. With a focus on wellbeing, and relaxation, the exclusive resident amenities are inspired by the natural beauty of this remarkable land. Here, everything is taken care of, with a level of personal service that is second-to-none. Private dining, with Nobu-trained chefs, and outdoor terraces offer rich opportunities for atmospheric celebrations. An elegant spa, outdoor pools and a serene Zen garden promote calmness and tranquility. Just next to the Residences, the stunning Nobu Hotel is home to almost 5,000 sqm of luxurious amenities, including one of the region's most exclusive rooftop bars and a world-renowned Nobu Restaurant.



Residential lounge

#### HOTEL AMENITIES

All residents at the Nobu Hotel will have access to the range of amenities at the Hotel premises:

---

Grand lobby lounge

---

A range of F&B venues including a Nobu Restaurant

---

Outdoor adult and kids' pools with cabanas

---

State-of-the-art gym

---

Rooftop bar

---

Spa facility with steam room and sauna at the Hotel

---

Ballroom & conference facilities

---

Direct access to the beach

---

#### RESIDENCES AMENITIES

All residents at the Nobu Residences will have access to the range of amenities at the residential premises:

---

Private grand lobby lounge

---

High-tech gym

---

Steam room and sauna

---

Outdoor pool with cabanas

---

Outdoor BBQ area, with extensive social areas

---

Private dining room and chef's kitchen

---

Spa facility at the Residences

---

Treatment rooms at the Residences

---

Indoor children's play area

---

Cinema room

---

Additional storage facilities

---

Indoor Zen Garden yoga space

---

Beach access

---

Access to a range of F&B venues including a Nobu Restaurant

---



Pool area with Museum view

## IMPECCABLE, CUSTOM-LED SERVICE

In Nobu Residences Abu Dhabi, service is always personal, forever heartfelt. Here, particular inspiration has been found in the combination of ancient Emirati hospitality and the Japanese traditions of omotenashi, a deep-seated, mindful philosophy that encompasses ceremonies such as ikaati tea blending and the offering of oshibori.

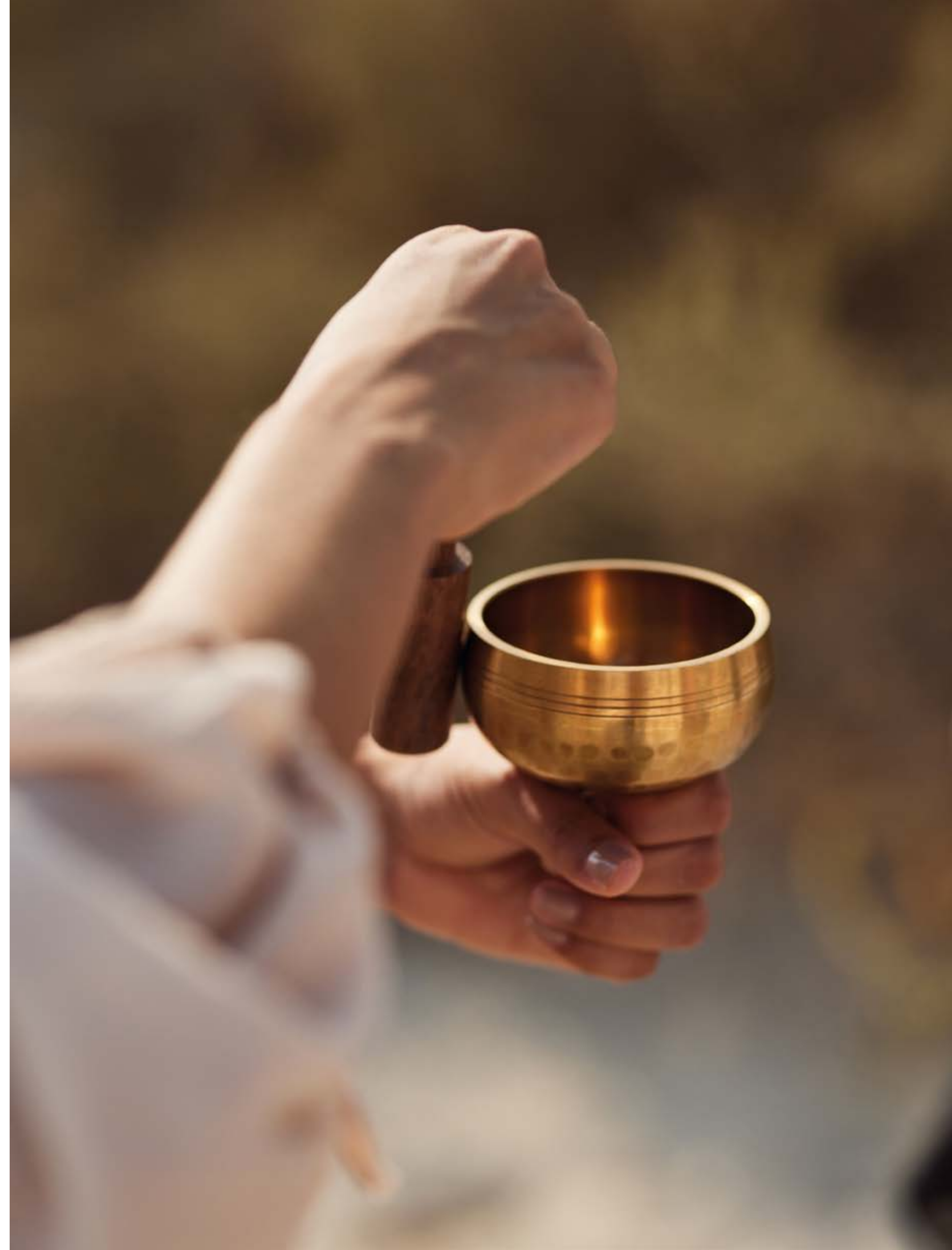
### GENERAL AND À LA CARTE SERVICES

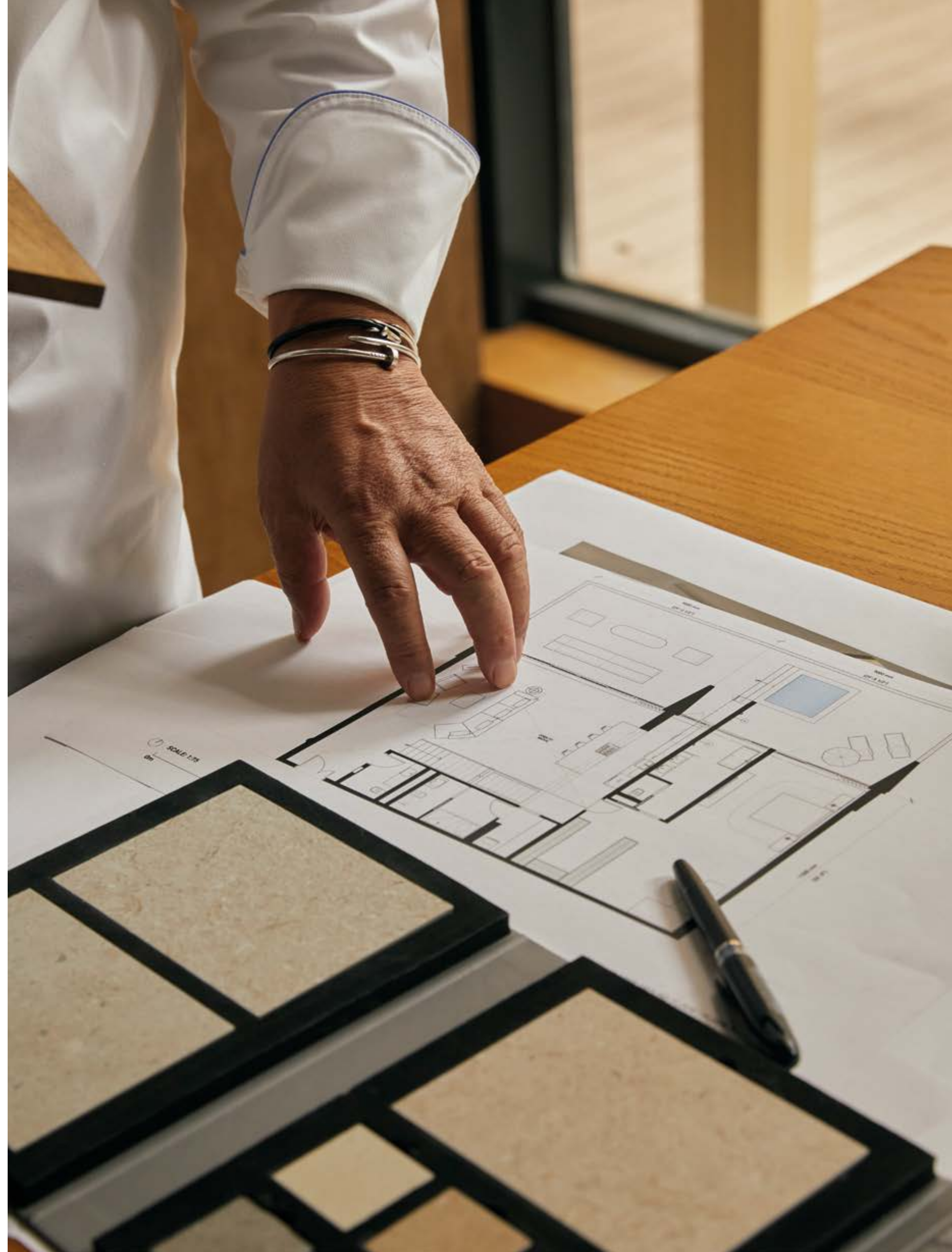
24hr Concierge
24hr Security surveillance
Bell boy & doorman services
House car with driver
Valet parking
Pool side towels and refreshments
Cleaning and maintenance of all common areas
Housekeeping services (daily or weekly)
Fitness Centre membership
Spa membership
In-residence childcare
Priority reservations for Nobu Hotel Abu Dhabi events
Hair and beauty salon services
Laundry services
Chauffeur services
Business centre services
Daily newspaper delivery
Floristry services
Grocery delivery
Dog walking and pet sitting

### FOOD AND BEVERAGE (F&B) SERVICES

Priority reservations at Nobu Restaurant Abu Dhabi
Priority reservations for Nobu Hotel Abu Dhabi events
Nobu Restaurant and in-room dining at the Hotel
Residence event catering
Nobu restaurant chef available for cooking in resident's own home
Bartender on demand at the Residences
Food preparation and cookery classes

À la carte services are on demand and subject to additional charges.







### *STUDIO PCH*

Séverine Tatangelo  
Founder and principal

Séverine Tatangelo believes great creative ideas can be universal and thrives in inventing spaces that celebrate the world's architectural heritage and its future. Since opening her own firm, Studio PCH, in Los Angeles in 2008, Séverine has created a stream of highly acclaimed commercial and private projects across the world. Soon after establishing her company, Tatangelo was tasked by Oracle co-founder Larry Ellison with helping create the famous Nobu Malibu Restaurant. Since then she has designed more than 20 Nobu projects worldwide. For her work on Nobu Residences Abu Dhabi, Séverine was inspired by the confluence of desert and water at this unique Saadiyat location, creating a design that plays with shadows and light and brings together principles of Zen philosophy with the natural elements of its surroundings.



### *RSP Architects*

Michael Magill  
Principal creative architect

Michael's designs for Nobu Residences Abu Dhabi focus on its role as a place of wellness and retreat, creating architecture that helps restore balance for all those who live here. As a hands-on creative director, Michael Magill looks to integrate innovative design with the latest technology to define spaces that become legacies capable of lasting for generations. Michael's Singapore-based architectural firm, RSP, can call on more than 70 years of experience across hospitality, residential, master planning and educational sectors. The company's notable projects in the Middle East include the St Regis Palm Tower in Dubai, Khalifa University, the Hindu Mandir Cultural Complex in Abu Dhabi, and the Armani Hotel in Diriyah Gate Development.



### *DESERT INK*

Duncan Denley  
Principal of landscaping

Duncan Denley is a chartered architect with more than 20 years' experience. He is committed to intelligent design that reduces environmental impact and construction budgets, and delivers innovative solutions. Since 2015, his UAE-based landscape architecture studio has created some of the most exciting places in the region, from rooftop pool hangouts and lush private residences to sustainable eco-hotels, desert parks and urban plazas. Working together with his own hand-picked creative team on Nobu Residences Abu Dhabi, Duncan has created designs that focus on the natural beauty of its beachfront setting, blending hard and soft landscaping to provide a tranquil atmosphere across both day and night.



*NOBU RESIDENCES ABU DHABI*

Aldar Square, Yas Island, Abu Dhabi  
United Arab Emirates

[aldar.com](http://aldar.com)

Disclaimer

The information on this brochure is presented as general information and no representation or warranty is expressly or impliedly given as to its accuracy, completeness, or correctness of the development or its surrounds. It does not constitute part of a legal offer or contract. Note that the renders were produced prior to completion of construction and are indicative only. Changes may be made during the development including areas, fittings, finishes, and specifications are subject to change without notice. The wardrobes and furniture are not included with any scale and should not be taken to indicate the final positions of power points, TV connections and the like. Prospective purchasers must rely on their own enquiries.

Nobu Residences Abu Dhabi are not owned, developed or sold by Nobu Hospitality LLC or its affiliates (Nobu Hotels). The developer uses the Nobu Hospitality trademarks and tradenames under a license from Nobu Hospitality LLC, which has not confirmed the accuracy of any of the statements or representations made herein.



**PsT.**

Call **600 548 200**

[www.propertyshopinvestment.com](http://www.propertyshopinvestment.com)